

Coastal Bend Workforce Area

(Not Seasonally Adjusted Unemployment Rates by WDA, MSA, & County)

Area	Area Type	Latest Monthly Data April 2018						Previous Monthly Data March 2018				Year Ago April 2017			
		Labor Force	Employment	Unemployment	Rate	M+-	Y+-	Labor Force	Employment	Unemployment	Rate	Labor Force	Employment	Unemployment	Rate
United States	Nation	161,527,000	155,181,000	6,346,000	3.9	-0.5	-0.2	161,763,000	155,178,000	6,585,000	4.1	160,181,000	153,161,000	7,021,000	4.4
Texas	State	13,750,299	13,191,783	558,516	4.1	0.1	-0.4	13,702,943	13,150,595	552,348	4.0	13,501,719	12,892,632	609,087	4.5
Corpus Christi	MSA	208,637	197,979	10,658	5.1	-0.4	-0.5	209,759	198,259	11,500	5.5	210,686	198,958	11,728	5.6
Coastal Bend	WDA	264,831	251,244	13,587	5.1	-0.4	-0.7	265,737	251,063	14,674	5.5	267,638	252,115	15,523	5.8
Aransas	County	10,416	9,780	636	6.1	-0.6	0.7	10,527	9,817	710	6.7	10,358	9,798	560	5.4
Bee	County	9,906	9,388	518	5.2	-0.5	-1.2	9,897	9,335	562	5.7	10,152	9,499	653	6.4
Brooks	County	2,501	2,344	157	6.3	-1.1	-2.1	2,476	2,293	183	7.4	2,453	2,248	205	8.4
Duval	County	4,764	4,499	265	5.6	-0.4	-2.9	4,803	4,517	286	6.0	4,834	4,425	409	8.5
Jim Wells	County	16,599	15,648	951	5.7	-0.5	-2.2	16,746	15,704	1,042	6.2	16,860	15,533	1,327	7.9
Kenedy	County	270	264	6	2.2	-1.3	-1.7	283	273	10	3.5	257	247	10	3.9
Kleberg	County	13,415	12,734	681	5.1	-0.2	-0.6	13,350	12,642	708	5.3	13,895	13,098	797	5.7
Live Oak	County	5,495	5,303	192	3.5	-0.5	-1.0	5,414	5,199	215	4.0	5,322	5,082	240	4.5
Nueces	County	167,751	159,717	8,034	4.8	-0.3	-0.4	168,512	159,881	8,631	5.1	169,276	160,429	8,847	5.2
Refugio	County	3,244	3,085	159	4.9	-0.7	0.1	3,009	2,841	168	5.6	3,179	3,025	154	4.8
San Patricio	County	30,470	28,482	1,988	6.5	-0.5	-1.0	30,720	28,561	2,159	7.0	31,052	28,731	2,321	7.5

(M+-) Change in unemployment rate from last month (Increase) (Decrease)

(Y+-) Change in unemployment rate from last year (Increase) (Decrease)

- Earnings for all occupations Coastal Bend, expressed as hourly rate (TWC):

Coastal Bend	All Occupations-	Average \$18.35/hr.	Entry level \$8.58/hr.	Experienced workers \$23.24/hr.	Top 10% \$33.56/hr.
Texas	All Occupations-	Average \$20.97/hr.	Entry level \$8.88/hr.	Experienced workers \$ 27.02/hr.	Top 10% \$39.64/hr.

- Educational Attainment for population 25 years of age and older - Corpus Christi (Census American Fact Finder/American Community Survey):

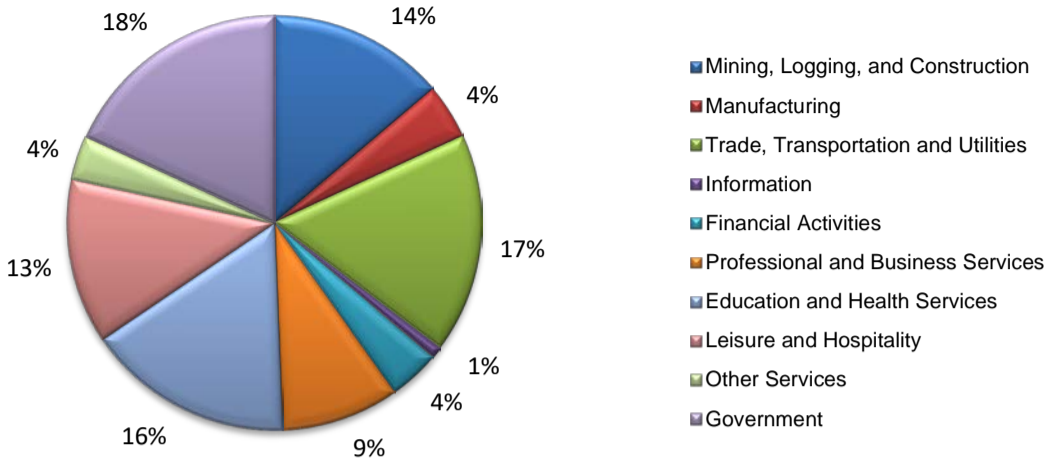
Less than 9th grade	8.7%	12th grade & GED	27.7%	Associates degree	7.0%	Graduate or Professional degrees	8.4%
9th thru 11th grade	9.3%	Some College	25.1%	Bachelors degree	13.8%		

- Median earnings Corpus Christi by education for persons 25 years of age & up (Census AFF/ACS): **\$27,211** (\$36,380 male/ \$22,328 female)

Less than High School	\$15,437	Some College or Associates	\$28,739	Graduate or Professional	\$56,681
High School & GED	\$26,818	Bachelor's	\$44,078		

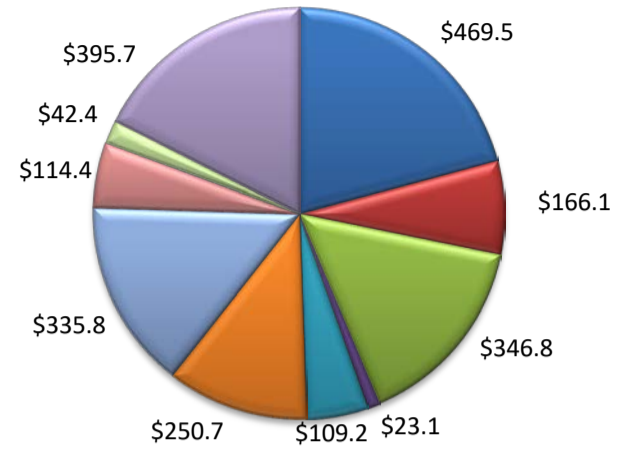
(Aransas, Nueces, San Patricio)

Industry Composition



Wages by Industry (in millions)

4th Quarter 2017



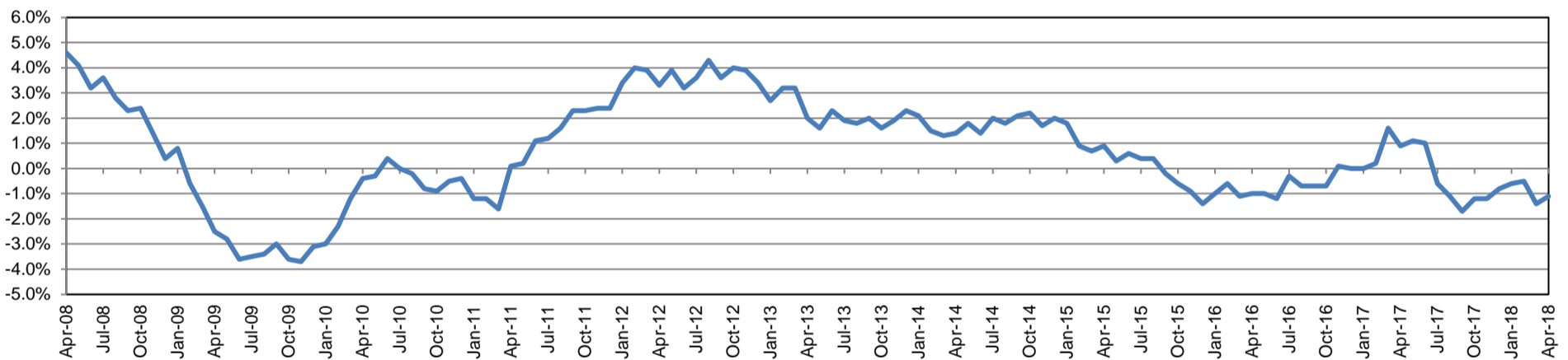
Employment by Industry

	Apr-18	Mar-18	Apr-17	Monthly Change		Annual Change	
				Actual	%	Actual	%
Total Nonfarm	192,000	192,400	194,100	-400	-0.2%	-2,100	-1.1%
Mining, Logging and Construction	26,500	27,100	26,400	-600	-2.2%	100	0.4%
Manufacturing	8,300	8,100	8,200	200	2.5%	100	1.2%
Trade, Transportation, and Utilities	32,900	32,900	33,500	0	0.0%	-600	-1.8%
Information	1,700	1,700	1,800	0	0.0%	-100	-5.6%
Financial Activities	7,700	7,800	7,700	-100	-1.3%	0	0.0%
Professional and Business Services	17,700	18,100	16,500	-400	-2.2%	1,200	7.3%
Education and Health Services	31,100	31,000	31,400	100	0.3%	-300	-1.0%
Leisure and Hospitality	24,600	24,200	26,400	400	1.7%	-1,800	-6.8%
Other Services	6,600	6,400	6,700	200	3.1%	-100	-1.5%
Government	34,900	35,100	35,500	-200	-0.6%	-600	-1.7%

Industry Size Class December 2017

Size Class	Employees per firm	Number of Firms	Employment in Size Class	% Total Employment
9	1000+	21	49,133	26.1%
8	500-999	20	13,820	7.4%
7	250-499	50	17,638	9.4%
6	100-249	224	32,748	17.4%
5	50-99	273	18,945	10.1%
4	20-49	800	24,438	13.0%
3	10-19	1,052	14,272	7.6%
2	5-9	1,448	9,596	5.1%
1	1-4	3,595	7,399	3.9%
0	0	737	0	0.0%
Total		8,220	187,989	100.0%

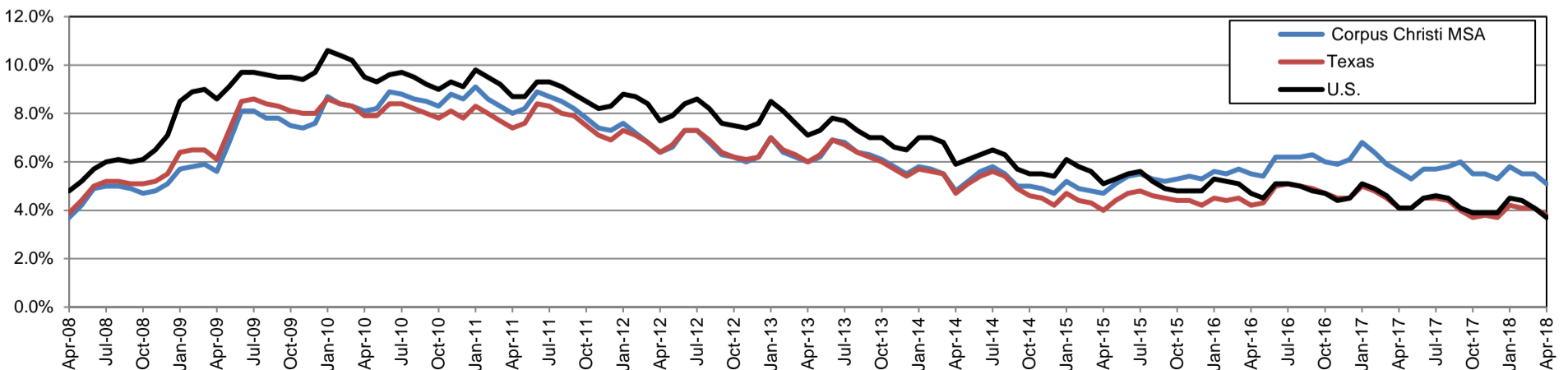
Annual Growth Rate for Total Nonagricultural Employment



Unemployment Information (all estimates in thousands)

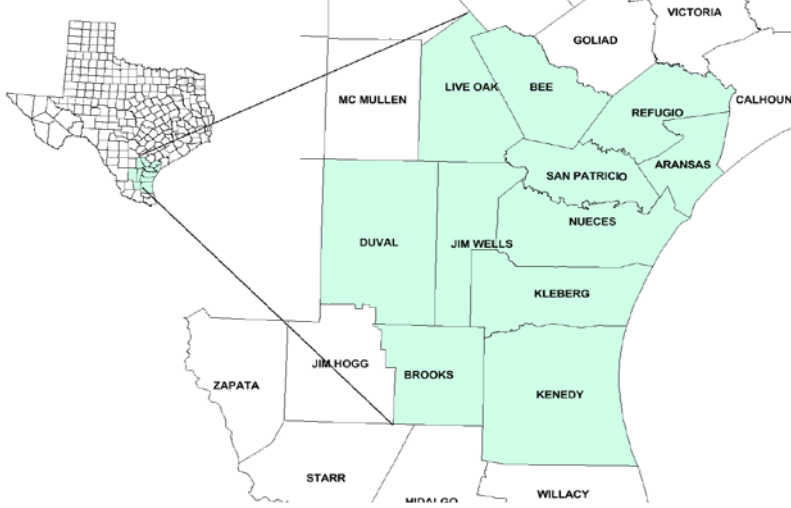
	Corpus Christi MSA				Texas (Actual)				United States (Actual)			
	C.L.F.	Emp.	Unemp.	Rate	C.L.F.	Emp.	Unemp.	Rate	C.L.F.	Emp.	Unemp.	Rate
Apr-18	208.6	198.0	10.7	5.1	13,860.3	13,340.2	520.2	3.8	161,280.0	155,348.0	5,932.0	3.7
Mar-18	209.8	198.3	11.5	5.5	13,836.5	13,267.1	569.4	4.1	161,548.0	154,877.0	6,671.0	4.1
Apr-17	210.7	199.0	11.7	5.6	13,527.2	12,967.8	559.4	4.1	159,817.0	153,262.0	6,555.0	4.1

Historical Unemployment Rates



Coastal Bend Workforce Development Area

April 2018



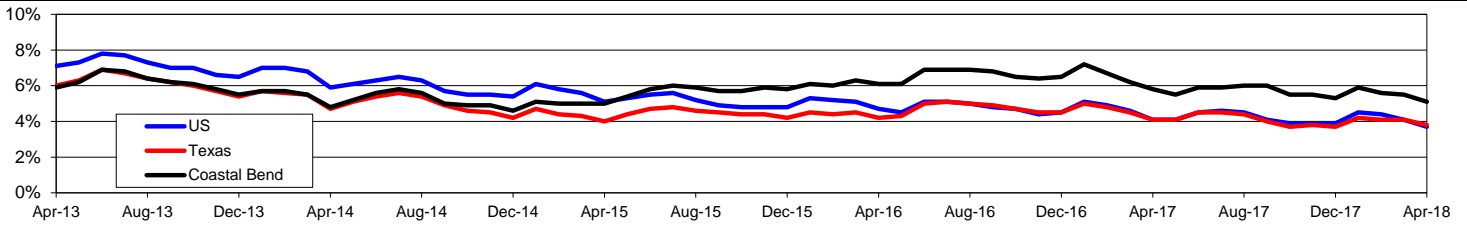
WDA Labor Force Statistics				
	Apr-18	Mar-18	Apr-17	OTY
CLF	264,831	265,737	267,638	-2,807
Employed	251,244	251,063	252,115	-871
Unemployed	13,587	14,674	15,523	-1,936
Rate	5.1%	5.5%	5.8%	-0.7%

Texas Labor Force Statistics				
	Apr-18	Mar-18	Apr-17	OTY
CLF	13,860,323	13,836,504	13,527,232	333,091
Employed	13,340,165	13,267,080	12,967,846	372,319
Unemployed	520,158	569,424	559,386	-39,228
Rate	3.8%	4.1%	4.1%	-0.3%

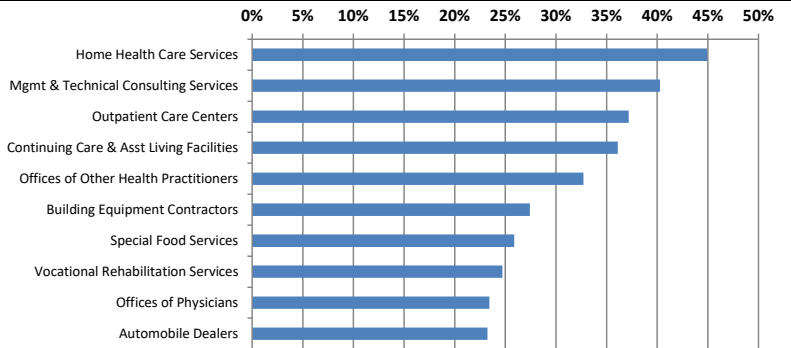
US Labor Force Statistics				
	Apr-18	Mar-18	Apr-17	OTY
CLF	161,280,000	161,548,000	159,817,000	1,463,000
Employed	155,348,000	154,877,000	153,262,000	2,086,000
Unemployed	5,932,000	6,671,000	6,555,000	-623,000
Rate	3.7%	4.1%	4.1%	-0.4%

Continued Claims for the Week of the 12th				
	Apr-18	Mar-18	Apr-17	OTY
WDA	2,362	2,610	3,393	-1,031
Texas	92,281	102,696	116,413	-24,132

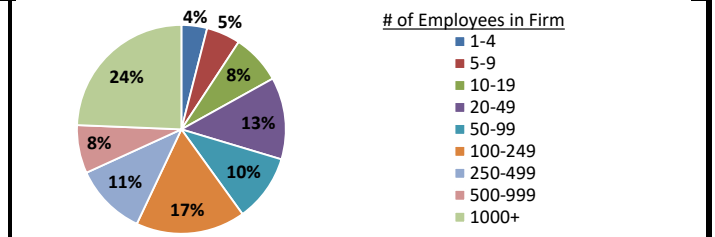
Historical Unemployment Rates



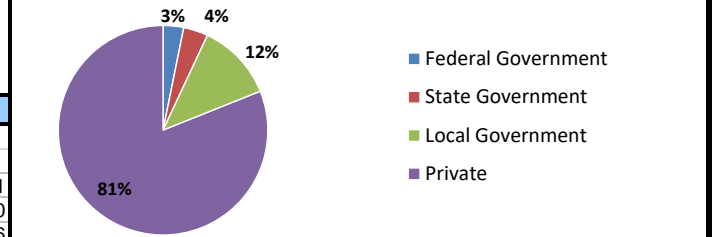
Projected Fastest Growing Industries in WDA (% growth 2014-2024)



Employment by Size Class (3rd Quarter 2017)



Employment by Ownership (3rd Quarter 2017)



Average Weekly Wage (3rd Quarter 2017)

	Q3 2017	Q2 2017	Q3 2016	Change	
				Quarter	Year
WDA	\$860	\$837	\$861	\$23	-\$1
Texas	\$1,032	\$1,027	\$1,042	\$5	-\$10
US	\$1,021	\$1,020	\$1,027	\$1	-\$6

Employment by Industry (3rd Quarter 2017, Percent Change)

Industry	Employment	% of total	% Change	
			Quarter	Year
Natural resources and mining	11,271	4.8%	7.4%	19.7%
Construction	23,619	10.1%	-4.3%	-3.5%
Manufacturing	12,384	5.3%	0.0%	-4.5%
Trade, transportation and utilities	43,000	18.4%	-0.2%	-2.2%
Information	2,080	0.9%	-1.9%	-5.5%
Financial activities	9,487	4.1%	0.6%	1.2%
Professional and business services	18,908	8.1%	2.6%	4.0%
Education and health services	62,433	26.8%	-6.5%	-2.5%
Leisure and hospitality	32,132	13.8%	-1.8%	-1.2%
Other services	6,030	2.6%	-1.7%	-7.0%
Public administration	12,015	5.1%	-0.1%	-0.2%
Total	233,359	100.0%	-2.1%	-1.0%

Employment by Industry (3rd Quarter 2017)

