

Coastal Bend Workforce Area

(Not Seasonally Adjusted Unemployment Rates by WDA, MSA, & County)

Area	Area Type	Latest Monthly Data July 2017						Previous Monthly Data June 2017				Year Ago July 2016			
		Labor Force	Employment	Unemployment	Rate	M+-	Y+-	Labor Force	Employment	Unemployment	Rate	Labor Force	Employment	Unemployment	Rate
United States	Nation	160,494,000	153,513,000	6,981,000	4.3	-0.1	-0.6	160,145,000	153,168,000	6,977,000	4.4	159,295,000	151,546,000	7,749,000	4.9
Texas	State	13,401,397	12,826,959	574,438	4.3	-0.3	-0.4	13,468,668	12,848,139	620,529	4.6	13,269,003	12,644,405	624,598	4.7
Corpus Christi	MSA	208,060	196,633	11,427	5.5	-0.4	-0.8	209,563	197,127	12,436	5.9	206,239	193,209	13,030	6.3
Coastal Bend	WDA	261,071	245,972	15,099	5.8	-0.4	-1.2	263,794	247,329	16,465	6.2	263,086	244,553	18,533	7.0
Aransas	County	10,084	9,548	536	5.3	-0.4	-0.7	10,211	9,628	583	5.7	10,033	9,434	599	6.0
Bee	County	9,701	9,062	639	6.6	-0.2	-2.1	9,940	9,260	680	6.8	10,205	9,320	885	8.7
Brooks	County	2,238	2,030	208	9.3	-0.8	-4.0	2,267	2,039	228	10.1	2,435	2,111	324	13.3
Duval	County	4,450	4,107	343	7.7	-1.0	-4.0	4,574	4,175	399	8.7	4,830	4,267	563	11.7
Jim Wells	County	15,612	14,401	1,211	7.8	-0.7	-4.2	15,931	14,583	1,348	8.5	17,200	15,131	2,069	12.0
Kenedy	County	195	187	8	4.1	0.8	-1.5	211	204	7	3.3	197	186	11	5.6
Kleberg	County	13,052	12,192	860	6.6	-0.2	-1.2	13,423	12,506	917	6.8	13,704	12,636	1,068	7.8
Live Oak	County	4,796	4,551	245	5.1	-0.6	-1.7	4,832	4,558	274	5.7	5,183	4,833	350	6.8
Nueces	County	167,534	158,757	8,777	5.2	-0.4	-0.9	168,556	159,057	9,499	5.6	165,993	155,926	10,067	6.1
Refugio	County	2,967	2,809	158	5.3	-0.5	-2.2	3,053	2,877	176	5.8	3,093	2,860	233	7.5
San Patricio	County	30,442	28,328	2,114	6.9	-0.7	-0.9	30,796	28,442	2,354	7.6	30,213	27,849	2,364	7.8

(M+-) Change in unemployment rate from last month (Increase) (Decrease)

(Y+-) Change in unemployment rate from last year (Increase) (Decrease)

- Earnings for all occupations Coastal Bend, expressed as hourly rate (TWC):

Coastal Bend	All Occupations-	Average \$18.35/hr.	Entry level \$8.58/hr.	Experienced workers \$23.24/hr.	Top 10% \$33.56/hr.
Texas	All Occupations-	Average \$20.97/hr.	Entry level \$8.88/hr.	Experienced workers \$ 27.02/hr.	Top 10% \$39.64/hr.

- Educational Attainment for population 25 years of age and older - Corpus Christi (Census American Fact Finder/American Community Survey):

Less than 9th grade	8.7%	12th grade & GED	27.7%	Associates degree	7.0%	Graduate or Professional degrees	8.4%
9th thru 11th grade	9.3%	Some College	25.1%	Bachelors degree	13.8%		

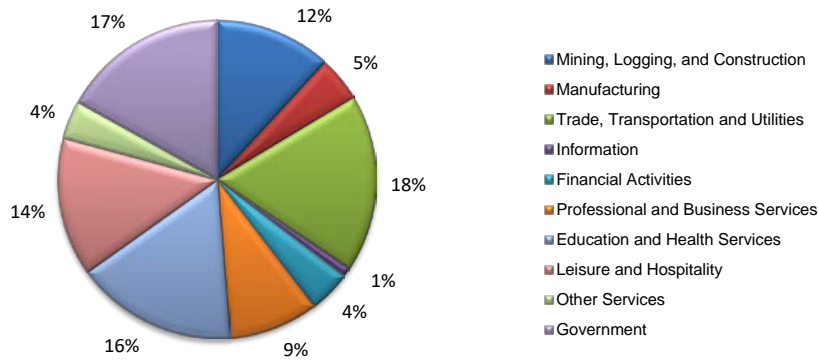
- Median earnings Corpus Christi by education for persons 25 years of age & up (Census AFF/ACS): **\$27,211** (\$36,380 male/ \$22,328 female)

Less than High School	\$15,437	Some College or Associates	\$28,739	Graduate or Professional	\$56,681
High School & GED	\$26,818	Bachelor's	\$44,078		

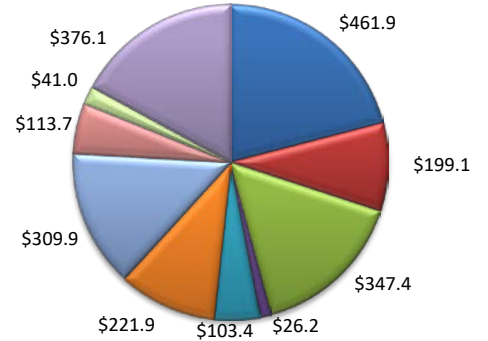
Equal Opportunity Employer/Program. Auxiliary aids and services are available upon request to individuals with disabilities.
Deaf, hard-of-hearing or speech impaired customers may contact **Relay Texas:** 1-800-735-2989 (TDD) and 1-800-735-2988 or 7-1-1 (Voice)

(Aransas, Nueces, San Patricio)

Industry Composition



Wages by Industry (in millions)
1st Quarter 2017



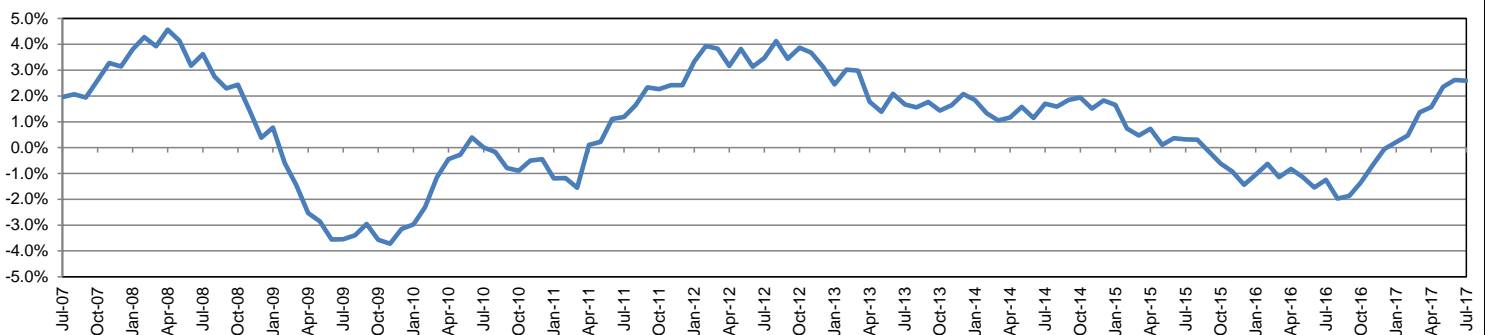
Employment by Industry

				Monthly Change		Annual Change	
	Jul-17	Jun-17	Jul-16	Actual	%	Actual	%
Total Nonfarm	194,300	196,200	189,400	-1,900	-1.0%	4,900	2.6%
Mining, Logging, and Construction	22,900	23,100	21,600	-200	-0.9%	1,300	6.0%
Manufacturing	9,000	8,900	8,700	100	1.1%	300	3.4%
Trade, Transportation, and Utilities	34,900	34,800	34,500	100	0.3%	400	1.2%
Information	1,800	1,800	1,900	0	0.0%	-100	-5.3%
Financial Activities	8,300	8,000	7,700	300	3.8%	600	7.8%
Professional and Business Services	17,800	17,700	16,700	100	0.6%	1,100	6.6%
Education and Health Services	31,900	32,000	31,300	-100	-0.3%	600	1.9%
Leisure and Hospitality	27,300	27,400	27,100	-100	-0.4%	200	0.7%
Other Services	7,500	7,500	7,400	0	0.0%	100	1.4%
Government	32,900	35,000	32,500	-2,100	-6.0%	400	1.2%

Industry Size Class

				January 2017	
Size Class	Employees per firm	Number of Firms	Employment in Size Class	% Total Employment	
9	1000+	20	49,579	26.2%	
8	500-999	18	12,979	6.8%	
7	250-499	48	16,729	8.8%	
6	100-249	211	31,833	16.8%	
5	50-99	294	20,996	11.1%	
4	20-49	815	25,035	13.2%	
3	10-19	1,116	15,163	8.0%	
2	5-9	1,514	10,040	5.3%	
1	1-4	3,510	7,240	3.8%	
0	0	744	0	0.0%	
Total		8,290	189,594	100.0%	

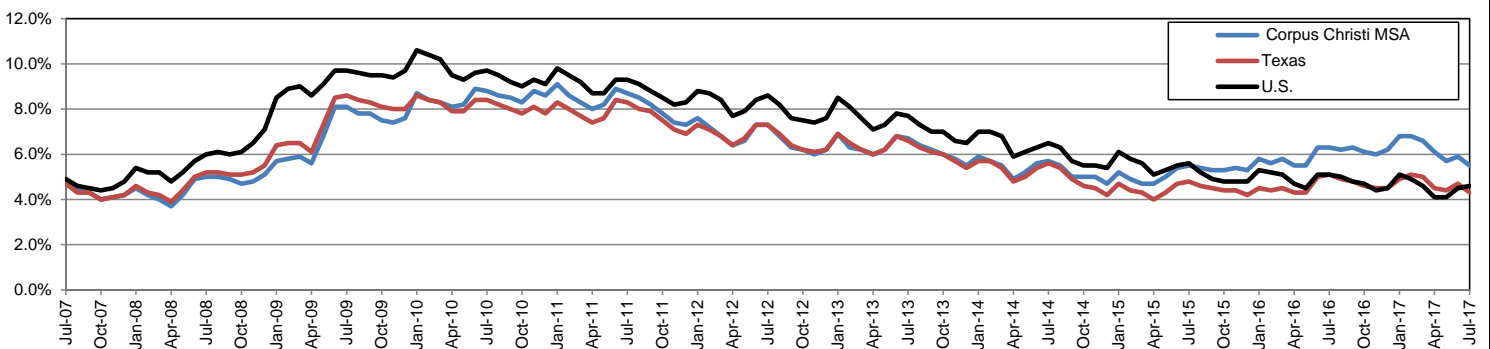
Annual Growth Rate for Total Nonagricultural Employment



Unemployment Information (all estimates in thousands)

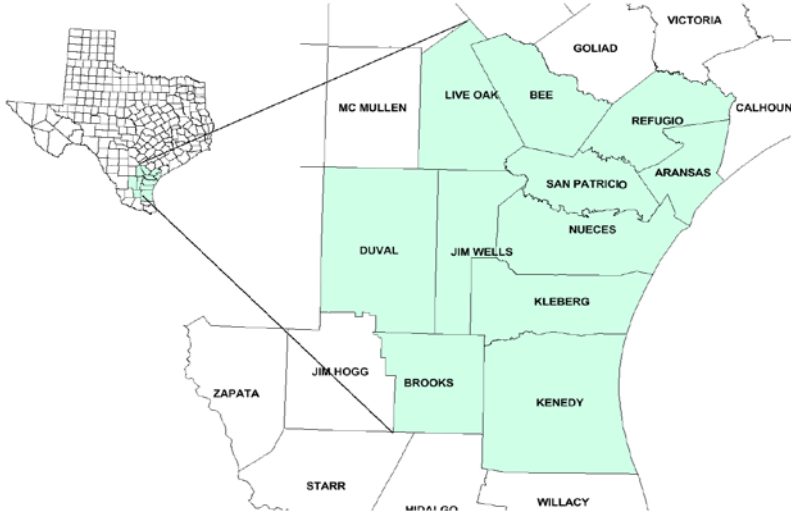
	Corpus Christi MSA				Texas (Actual)				United States (Actual)			
	C.L.F.	Emp.	Unemp.	Rate	C.L.F.	Emp.	Unemp.	Rate	C.L.F.	Emp.	Unemp.	Rate
Jul-17	208.1	196.6	11.4	5.5	13,433.4	12,849.5	584.0	4.3	161,911.0	154,470.0	7,441.0	4.6
Jun-17	209.6	197.1	12.4	5.9	13,462.3	12,831.1	631.1	4.7	161,337.0	154,086.0	7,250.0	4.5
Jul-16	206.2	193.2	13.0	6.3	13,356.8	12,681.9	675.0	5.1	160,705.0	152,437.0	8,267.0	5.1

Historical Unemployment Rates



Coastal Bend Workforce Development Area

July 2017



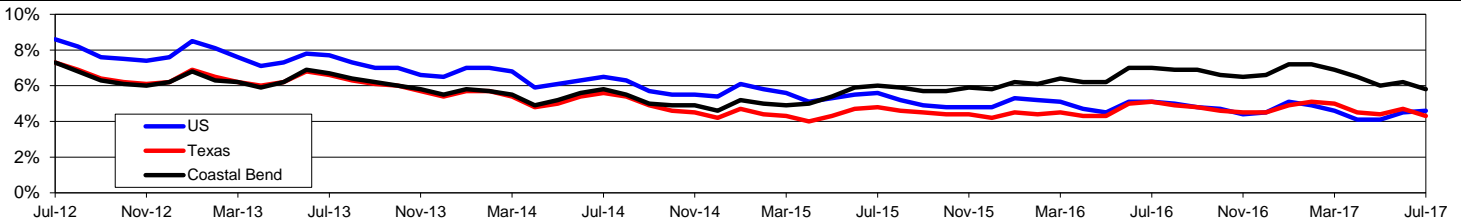
WDA Labor Force Statistics				
	Jul-17	Jun-17	Jul-16	OTY
CLF	261,071	263,794	263,086	-2,015
Employed	245,972	247,329	244,553	1,419
Unemployed	15,099	16,465	18,533	-3,434
Rate	5.8%	6.2%	7.0%	-1.2%

Texas Labor Force Statistics				
	Jul-17	Jun-17	Jul-16	OTY
CLF	13,433,444	13,462,252	13,356,834	76,610
Employed	12,849,486	12,831,118	12,681,873	167,613
Unemployed	583,958	631,134	674,961	-91,003
Rate	4.3%	4.7%	5.1%	-0.8%

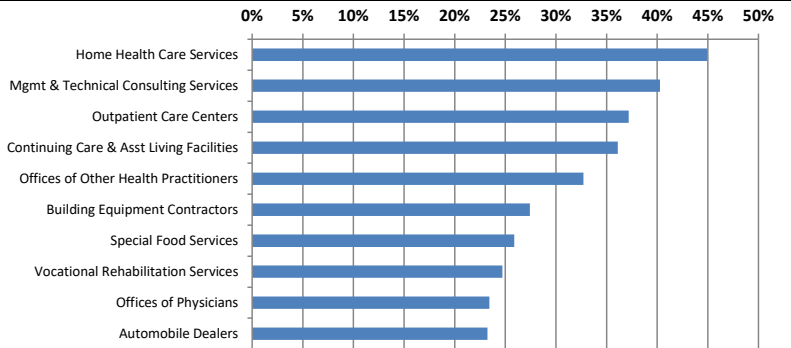
US Labor Force Statistics				
	Jul-17	Jun-17	Jul-16	OTY
CLF	161,911,000	161,337,000	160,705,000	1,206,000
Employed	154,470,000	154,086,000	152,437,000	2,033,000
Unemployed	7,441,000	7,250,000	8,267,000	-826,000
Rate	4.6%	4.5%	5.1%	-0.5%

Continued Claims for the Week of the 12th				
	Jul-17	Jun-17	Jul-16	OTY
WDA	3,302	3,262	5,044	-1,742
Texas	123,407	124,197	157,732	-34,325

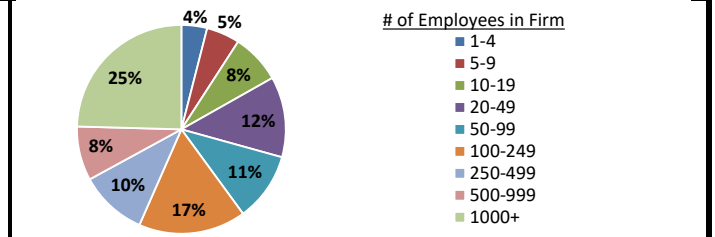
Historical Unemployment Rates



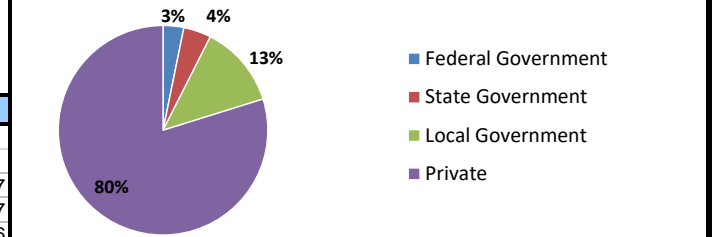
Projected Fastest Growing Industries in WDA (% growth 2014-2024)



Employment by Size Class (4th Quarter 2016)



Employment by Ownership (4th Quarter 2016)



Average Weekly Wage (4th Quarter 2016)

	Q4 2016	Q3 2016	Q4 2015	Change	
				Quarter	Year
WDA	\$869	\$861	\$896	\$8	-\$27
Texas	\$1,072	\$1,042	\$1,099	\$31	-\$27
US	\$1,067	\$1,027	\$1,083	\$40	-\$16

Employment by Industry (4th Quarter 2016, Percent Change)

Industry	Employment	% of total	% Change	
			Quarter	Year
Natural resources and mining	9,535	4.0%	1.3%	-25.2%
Construction	25,042	10.5%	2.3%	22.4%
Manufacturing	12,626	5.3%	-2.6%	-10.1%
Trade, transportation and utilities	44,227	18.6%	0.6%	-4.6%
Information	2,138	0.9%	-2.8%	-12.7%
Financial activities	9,287	3.9%	-0.9%	-10.7%
Professional and business services	18,209	7.7%	0.1%	-4.3%
Education and health services	67,395	28.4%	5.4%	2.7%
Leisure and hospitality	30,623	12.9%	-5.8%	-2.0%
Other services	6,237	2.6%	-3.8%	-8.5%
Public administration	12,223	5.1%	1.5%	3.0%
Total	237,542	100.0%	0.8%	-1.5%

Employment by Industry (4th Quarter 2016)

