

# Coastal Bend Workforce Area

(Not Seasonally Adjusted Unemployment Rates by WDA, MSA, & County)

Area	Area Type	Latest Monthly Data April 2017						Previous Monthly Data March 2017				Year Ago April 2016			
		Labor Force	Employment	Unemployment	Rate	M+-	Y+-	Labor Force	Employment	Unemployment	Rate	Labor Force	Employment	Unemployment	Rate
United States	Nation	160,213,000	153,156,000	7,056,000	4.4	-0.1	-0.6	160,201,000	153,000,000	7,202,000	4.5	158,939,000	151,028,000	7,910,000	5.0
Texas	State	13,548,771	12,872,464	676,307	5.0	0.0	0.4	13,520,071	12,842,576	677,495	5.0	13,215,617	12,606,014	609,603	4.6
Corpus Christi	MSA	209,630	196,725	12,905	6.2	-0.4	0.7	209,937	196,116	13,821	6.6	205,733	194,321	11,412	5.5
Coastal Bend	WDA	264,836	247,692	17,144	6.5	-0.4	0.3	265,832	247,391	18,441	6.9	264,194	247,734	16,460	6.2
Aransas	County	10,219	9,602	617	6.0	-0.7	0.7	10,273	9,586	687	6.7	10,055	9,526	529	5.3
Bee	County	10,139	9,402	737	7.3	-0.4	0.1	10,145	9,359	786	7.7	10,496	9,722	774	7.4
Brooks	County	2,259	2,032	227	10.0	-1.0	-2.6	2,337	2,080	257	11.0	2,437	2,130	307	12.6
Duval	County	4,586	4,129	457	10.0	-0.6	-1.8	4,650	4,155	495	10.6	4,931	4,351	580	11.8
Jim Wells	County	16,079	14,608	1,471	9.1	-0.6	-1.7	16,414	14,814	1,600	9.7	17,534	15,634	1,900	10.8
Kenedy	County	198	188	10	5.1	-0.5	0.7	214	202	12	5.6	229	219	10	4.4
Kleberg	County	14,038	13,141	897	6.4	-0.6	-0.2	14,142	13,156	986	7.0	14,430	13,479	951	6.6
Live Oak	County	4,883	4,616	267	5.5	-0.5	-0.5	4,912	4,617	295	6.0	5,259	4,941	318	6.0
Nueces	County	168,425	158,701	9,724	5.8	-0.4	0.5	168,614	158,188	10,426	6.2	165,418	156,708	8,710	5.3
Refugio	County	3,024	2,851	173	5.7	-0.4	-0.9	3,081	2,892	189	6.1	3,145	2,937	208	6.6
San Patricio	County	30,986	28,422	2,564	8.3	-0.4	1.1	31,050	28,342	2,708	8.7	30,260	28,087	2,173	7.2

(M+-) Change in unemployment rate from last month (Increase) (Decrease)

(Y+-) Change in unemployment rate from last year (Increase) (Decrease)

- Earnings for all occupations Coastal Bend, expressed as hourly rate (TWC):

<b>Coastal Bend</b>	<b>All Occupations-</b>	<b>Average \$18.35/hr.</b>	<b>Entry level \$8.58/hr.</b>	<b>Experienced workers \$23.24/hr.</b>	<b>Top 10% \$33.56/hr.</b>
<b>Texas</b>	<b>All Occupations-</b>	<b>Average \$20.97/hr.</b>	<b>Entry level \$8.88/hr.</b>	<b>Experienced workers \$ 27.02/hr.</b>	<b>Top 10% \$39.64/hr.</b>

- Educational Attainment for population 25 years of age and older - Corpus Christi (Census American Fact Finder/American Community Survey):

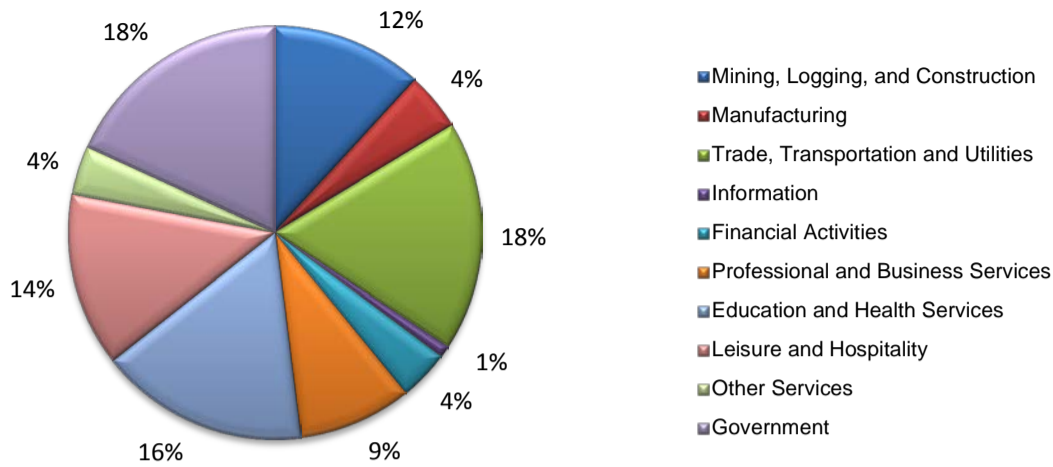
<b>Less than 9<sup>th</sup> grade</b>	<b>8.7%</b>	<b>12<sup>th</sup> grade &amp; GED</b>	<b>27.7%</b>	<b>Associates degree</b>	<b>7.0%</b>	<b>Graduate or Professional degrees</b>	<b>8.4%</b>
<b>9<sup>th</sup> thru 11<sup>th</sup> grade</b>	<b>9.3%</b>	<b>Some College</b>	<b>25.1%</b>	<b>Bachelors degree</b>	<b>13.8%</b>		

- Median earnings Corpus Christi by education for persons 25 years of age & up (Census AFF/ACS): **\$27,211** (\$36,380 male/ \$22,328 female)

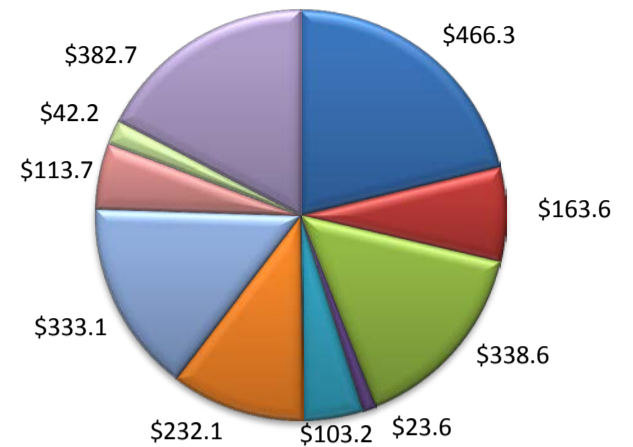
<b>Less than High School</b>	<b>\$15,437</b>	<b>Some College or Associates</b>	<b>\$28,739</b>	<b>Graduate or Professional</b>	<b>\$56,681</b>
<b>High School &amp; GED</b>	<b>\$26,818</b>	<b>Bachelor's</b>	<b>\$44,078</b>		

(Aransas, Nueces, San Patricio)

Industry Composition



Wages by Industry (in millions)  
4th Quarter 2016



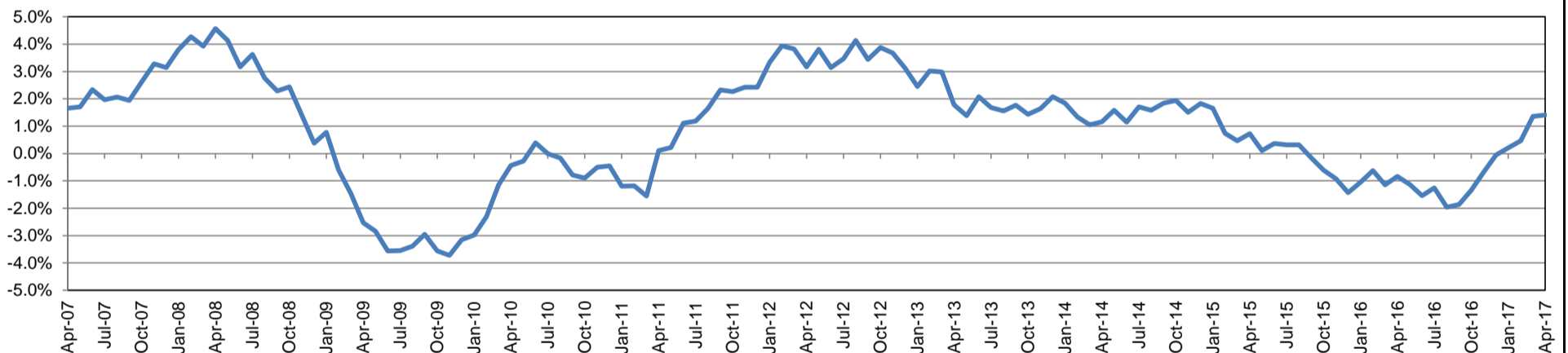
Employment by Industry

	Apr-17	Mar-17	Apr-16	Monthly Change		Annual Change	
				Actual	%	Actual	%
Total Nonfarm	193,900	193,300	191,200	600	0.3%	2,700	1.4%
Mining, Logging, and Construction	22,800	23,200	22,500	-400	-1.7%	300	1.3%
Manufacturing	8,800	8,700	8,800	100	1.2%	0	0.0%
Trade, Transportation, and Utilities	34,800	34,500	34,200	300	0.9%	600	1.8%
Information	1,800	1,800	1,900	0	0.0%	-100	-5.3%
Financial Activities	7,700	7,500	7,600	200	2.7%	100	1.3%
Professional and Business Services	17,200	17,100	17,200	100	0.6%	0	0.0%
Education and Health Services	31,700	31,600	30,800	100	0.3%	900	2.9%
Leisure and Hospitality	26,400	26,100	26,100	300	1.2%	300	1.2%
Other Services	7,400	7,200	7,200	200	2.8%	200	2.8%
Government	35,300	35,600	34,900	-300	-0.8%	400	1.2%

Industry Size Class

Size Class	Employees per firm	Number of Firms	December 2016		
			Employment in Size Class	% Total Employment	
9	1000+	20	47,935	25.4%	
8	500-999	20	13,912	7.4%	
7	250-499	49	16,846	8.9%	
6	100-249	210	31,779	16.9%	
5	50-99	306	21,256	11.3%	
4	20-49	817	24,873	13.2%	
3	10-19	1,089	14,753	7.8%	
2	5-9	1,506	9,886	5.2%	
1	1-4	3,592	7,284	3.9%	
0	0	652	0	0.0%	
Total			8,261	188,524	100.0%

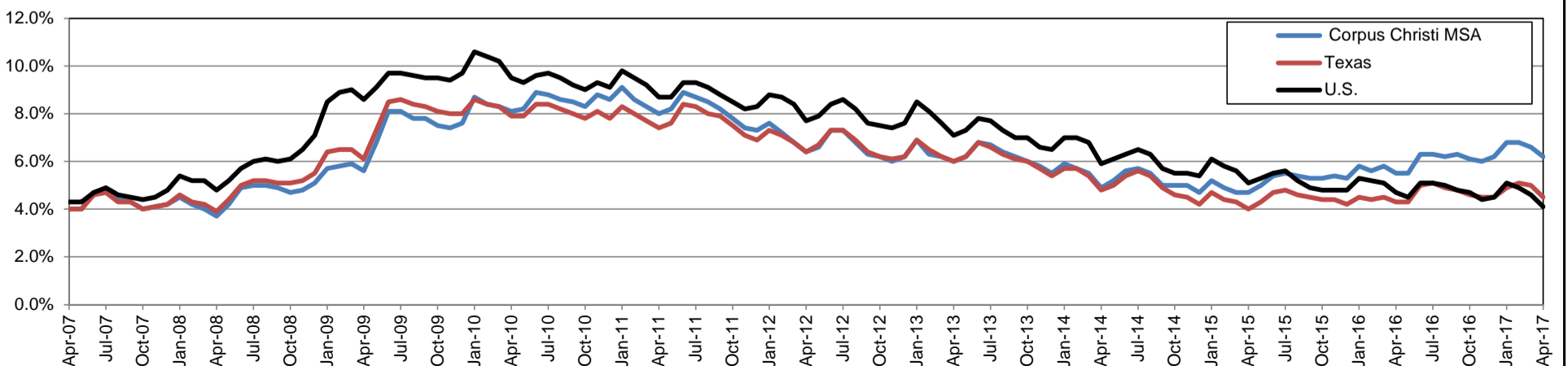
Annual Growth Rate for Total Nonagricultural Employment



Unemployment Information (all estimates in thousands)

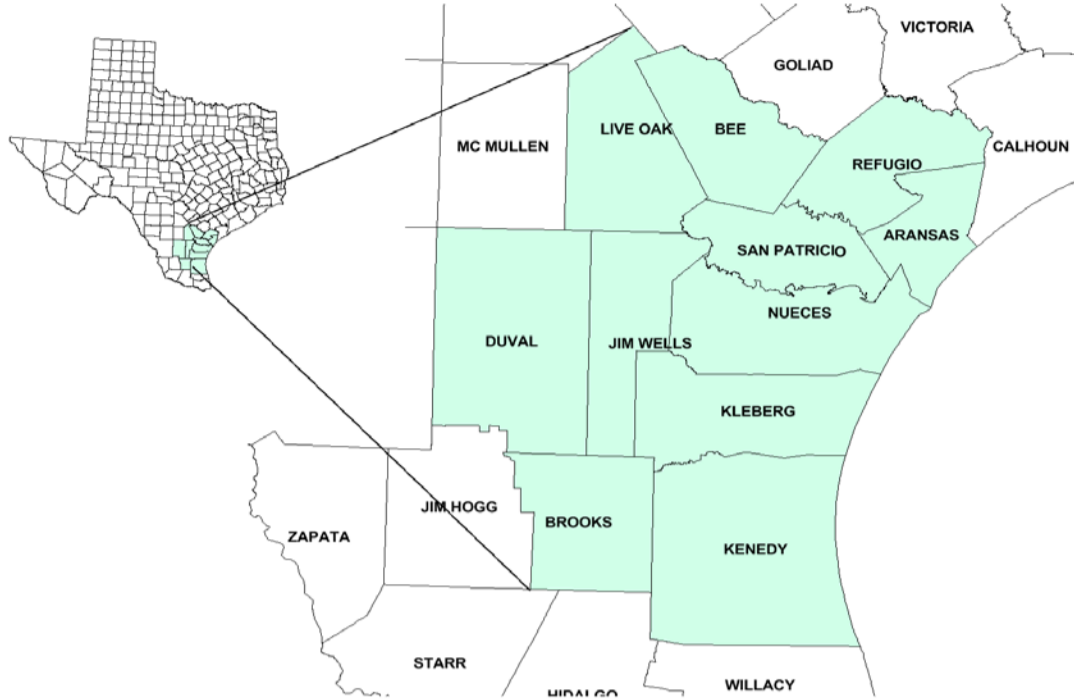
	Corpus Christi MSA				Texas (Actual)				United States (Actual)			
	C.L.F.	Emp.	Unemp.	Rate	C.L.F.	Emp.	Unemp.	Rate	C.L.F.	Emp.	Unemp.	Rate
Apr-17	209.6	196.7	12.9	6.2	13,506.7	12,895.0	611.7	4.5	159,817.0	153,262.0	6,555.0	4.1
Mar-17	209.9	196.1	13.8	6.6	13,514.6	12,838.9	675.6	5.0	159,912.0	152,628.0	7,284.0	4.6
Apr-16	205.7	194.3	11.4	5.5	13,236.9	12,672.9	564.0	4.3	158,488.0	151,075.0	7,413.0	4.7

Historical Unemployment Rates



# Coastal Bend Workforce Development Area

April 2017



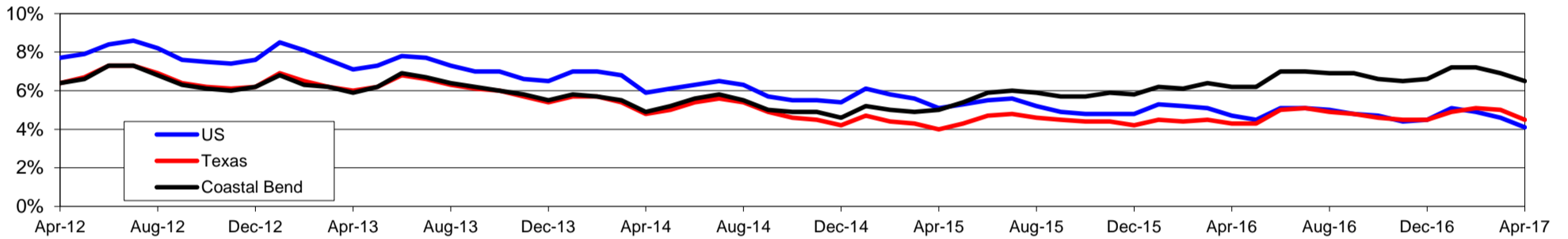
WDA Labor Force Statistics				
	Apr-17	Mar-17	Apr-16	OTY
CLF	264,836	265,832	264,194	642
Employed	247,692	247,391	247,734	-42
Unemployed	17,144	18,441	16,460	684
Rate	6.5%	6.9%	6.2%	0.3%

Texas Labor Force Statistics				
	Apr-17	Mar-17	Apr-16	OTY
CLF	13,506,742	13,514,563	13,236,855	269,887
Employed	12,895,003	12,838,948	12,672,854	222,149
Unemployed	611,739	675,615	564,001	47,738
Rate	4.5%	5.0%	4.3%	0.2%

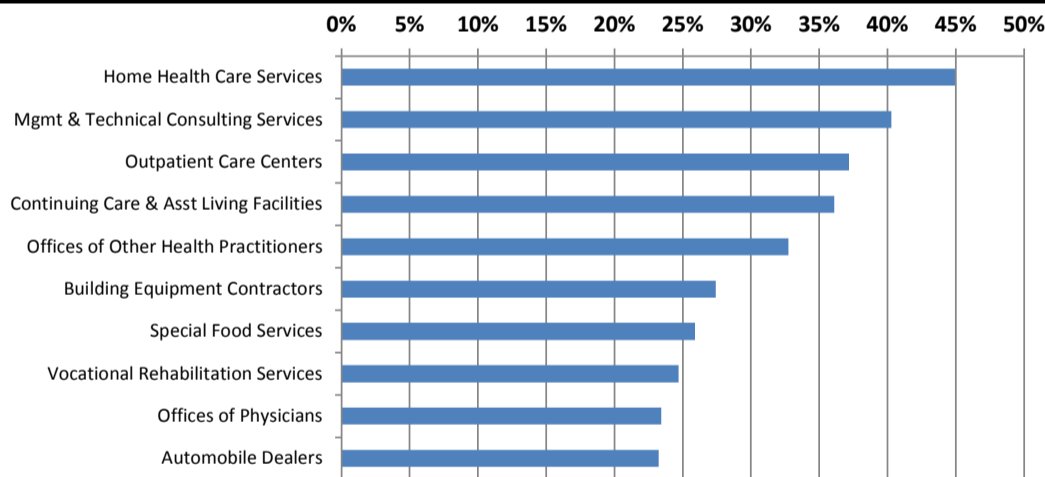
US Labor Force Statistics				
	Apr-17	Mar-17	Apr-16	OTY
CLF	159,817,000	159,912,000	158,488,000	1,329,000
Employed	153,262,000	152,628,000	151,075,000	2,187,000
Unemployed	6,555,000	7,284,000	7,413,000	-858,000
Rate	4.1%	4.6%	4.7%	-0.6%

Continued Claims for the Week of the 12th				
	Apr-17	Mar-17	Apr-16	OTY
WDA	3,370	3,533	5,279	-1,909
Texas	122,950	132,086	145,342	-22,392

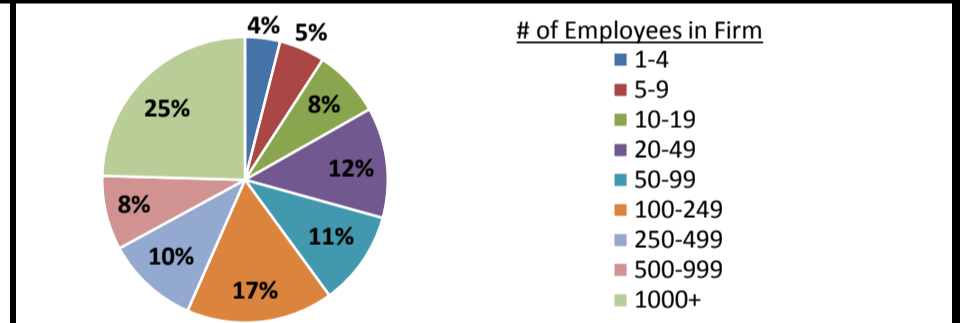
## Historical Unemployment Rates



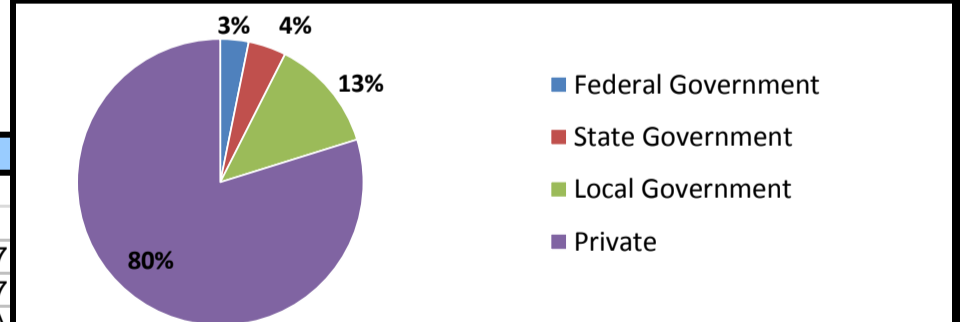
## Projected Fastest Growing Industries in WDA (% growth 2014-2024)



## Employment by Size Class (4th Quarter 2016)



## Employment by Ownership (4th Quarter 2016)



## Average Weekly Wage (4th Quarter 2016)

	Q4 2016	Q3 2016	Q4 2015	Change	
				Quarter	Year
WDA	\$869	\$861	\$896	\$8	-\$27
Texas	\$1,072	\$1,042	\$1,099	\$31	-\$27
US	N/A	\$1,027	\$1,083	N/A	N/A

## Employment by Industry (4th Quarter 2016, Percent Change)

Industry	Employment	% of total	% Change	
			Quarter	Year
Natural resources and mining	9,535	4.0%	1.3%	-25.2%
Construction	25,042	10.5%	2.3%	22.4%
Manufacturing	12,626	5.3%	-2.6%	-10.1%
Trade, transportation and utilities	44,227	18.6%	0.6%	-4.6%
Information	2,138	0.9%	-2.8%	-12.7%
Financial activities	9,287	3.9%	-0.9%	-10.7%
Professional and business services	18,209	7.7%	0.1%	-4.3%
Education and health services	67,395	28.4%	5.4%	2.7%
Leisure and hospitality	30,623	12.9%	-5.8%	-2.0%
Other services	6,237	2.6%	-3.8%	-8.5%
Public administration	12,223	5.1%	1.5%	3.0%
<b>Total</b>	<b>237,542</b>	<b>100.0%</b>	<b>0.8%</b>	<b>-1.5%</b>

## Employment by Industry (4th Quarter 2016)

