

Coastal Bend Workforce Area

(Not Seasonally Adjusted Unemployment Rates by WDA, MSA, & County)

Area	Area Type	Latest Monthly Data October 2017						Previous Monthly Data September 2017				Year Ago October 2016			
		Labor Force	Employment	Unemployment	Rate	M+-	Y+-	Labor Force	Employment	Unemployment	Rate	Labor Force	Employment	Unemployment	Rate
United States	Nation	160,381,000	153,861,000	6,520,000	4.1	-0.1	-0.7	161,146,000	154,345,000	6,801,000	4.2	159,643,000	151,926,000	7,904,000	4.8
Texas	State	13,427,736	12,910,319	517,417	3.9	-0.1	-0.9	13,408,314	12,867,216	541,098	4.0	13,330,692	12,697,343	633,349	4.8
Corpus Christi	MSA	208,879	198,244	10,635	5.1	-0.8	-1.0	210,254	197,788	12,466	5.9	205,340	192,892	12,448	6.1
Coastal Bend	WDA	262,968	249,422	13,546	5.2	-0.8	-1.4	264,363	248,571	15,792	6.0	261,761	244,587	17,174	6.6
Aransas	County	10,484	9,645	839	8.0	-2.2	2.0	10,683	9,592	1,091	10.2	10,000	9,398	602	6.0
Bee	County	9,736	9,194	542	5.6	-0.5	-1.9	9,846	9,249	597	6.1	10,122	9,358	764	7.5
Brooks	County	2,272	2,128	144	6.3	-1.0	-4.7	2,291	2,123	168	7.3	2,365	2,106	259	11.0
Duval	County	4,639	4,375	264	5.7	-1.1	-5.1	4,667	4,349	318	6.8	4,780	4,262	518	10.8
Jim Wells	County	15,988	15,048	940	5.9	-0.8	-4.3	15,948	14,877	1,071	6.7	16,814	15,094	1,720	10.2
Kenedy	County	227	221	6	2.6	-0.7	-2.1	213	206	7	3.3	190	181	9	4.7
Kleberg	County	13,226	12,610	616	4.7	-0.7	-1.9	13,078	12,374	704	5.4	14,045	13,117	928	6.6
Live Oak	County	4,977	4,765	212	4.3	-0.3	-1.8	4,999	4,767	232	4.6	5,049	4,740	309	6.1
Nueces	County	167,671	159,999	7,672	4.6	-0.6	-1.1	168,507	159,695	8,812	5.2	165,159	155,676	9,483	5.7
Refugio	County	3,024	2,837	187	6.2	-1.3	-1.0	3,067	2,838	229	7.5	3,056	2,837	219	7.2
San Patricio	County	30,724	28,600	2,124	6.9	-1.4	-0.9	31,064	28,501	2,563	8.3	30,181	27,818	2,363	7.8

(M+-) Change in unemployment rate from last month (Increase) (Decrease)

(Y+-) Change in unemployment rate from last year (Increase) (Decrease)

- Earnings for all occupations Coastal Bend, expressed as hourly rate (TWC):

Coastal Bend	All Occupations-	Average \$18.35/hr.	Entry level \$8.58/hr.	Experienced workers \$23.24/hr.	Top 10% \$33.56/hr.
Texas	All Occupations-	Average \$20.97/hr.	Entry level \$8.88/hr.	Experienced workers \$ 27.02/hr.	Top 10% \$39.64/hr.

- Educational Attainment for population 25 years of age and older - Corpus Christi (Census American Fact Finder/American Community Survey):

Less than 9th grade	8.7%	12th grade & GED	27.7%	Associates degree	7.0%	Graduate or Professional degrees	8.4%
9th thru 11th grade	9.3%	Some College	25.1%	Bachelors degree	13.8%		

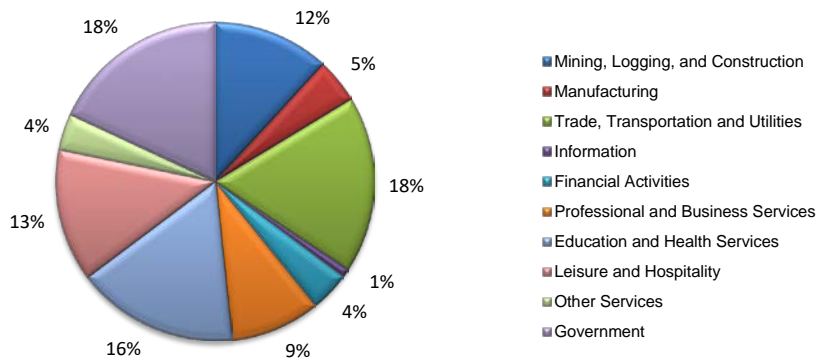
- Median earnings Corpus Christi by education for persons 25 years of age & up (Census AFF/ACS): **\$27,211** (\$36,380 male/ \$22,328 female)

Less than High School	\$15,437	Some College or Associates	\$28,739	Graduate or Professional	\$56,681
High School & GED	\$26,818	Bachelor's	\$44,078		

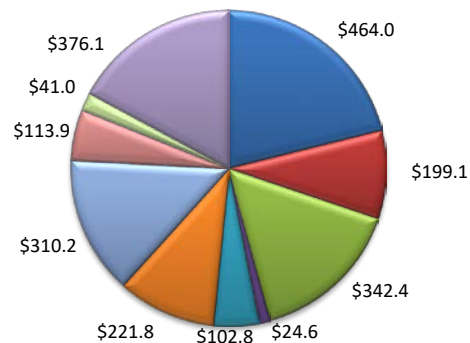
Equal Opportunity Employer/Program. Auxiliary aids and services are available upon request to individuals with disabilities.
Deaf, hard-of-hearing or speech impaired customers may contact **Relay Texas:** 1-800-735-2989 (TDD) and 1-800-735-2988 or 7-1-1 (Voice)

(Aransas, Nueces, San Patricio)

Industry Composition



Wages by Industry (in millions)
2nd Quarter 2017



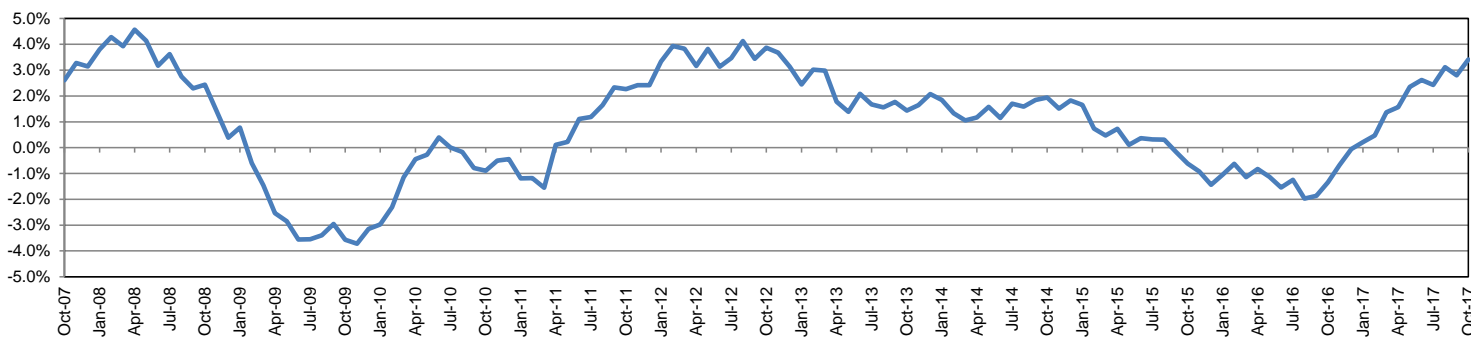
Employment by Industry

				Monthly Change		Annual Change	
	Oct-17	Sep-17	Oct-16	Actual	%	Actual	%
Total Nonfarm	197,100	194,600	190,600	2,500	1.3%	6,500	3.4%
Mining, Logging, and Construction	23,300	23,100	22,300	200	0.9%	1,000	4.5%
Manufacturing	8,900	8,900	8,600	0	0.0%	300	3.5%
Trade, Transportation, and Utilities	35,400	35,300	34,200	100	0.3%	1,200	3.5%
Information	1,700	1,800	1,800	-100	-5.6%	-100	-5.6%
Financial Activities	7,900	8,000	7,600	-100	-1.3%	300	3.9%
Professional and Business Services	18,100	17,400	16,000	700	4.0%	2,100	13.1%
Education and Health Services	32,400	31,900	31,900	500	1.6%	500	1.6%
Leisure and Hospitality	26,400	26,300	25,800	100	0.4%	600	2.3%
Other Services	7,300	7,400	7,100	-100	-1.4%	200	2.8%
Government	35,700	34,500	35,300	1,200	3.5%	400	1.1%

Industry Size Class

Size Class	Employees per firm	Number of Firms	June 2017	
			Employment in Size Class	% Total Employment
9	1000+	21	49,532	26.1%
8	500-999	16	11,154	5.9%
7	250-499	51	17,911	9.4%
6	100-249	224	33,502	17.6%
5	50-99	285	19,997	10.5%
4	20-49	825	25,475	13.4%
3	10-19	1,110	15,211	8.0%
2	5-9	1,508	9,987	5.3%
1	1-4	3,493	7,203	3.8%
0	0	717	0	0.0%
Total		8,250	189,972	100.0%

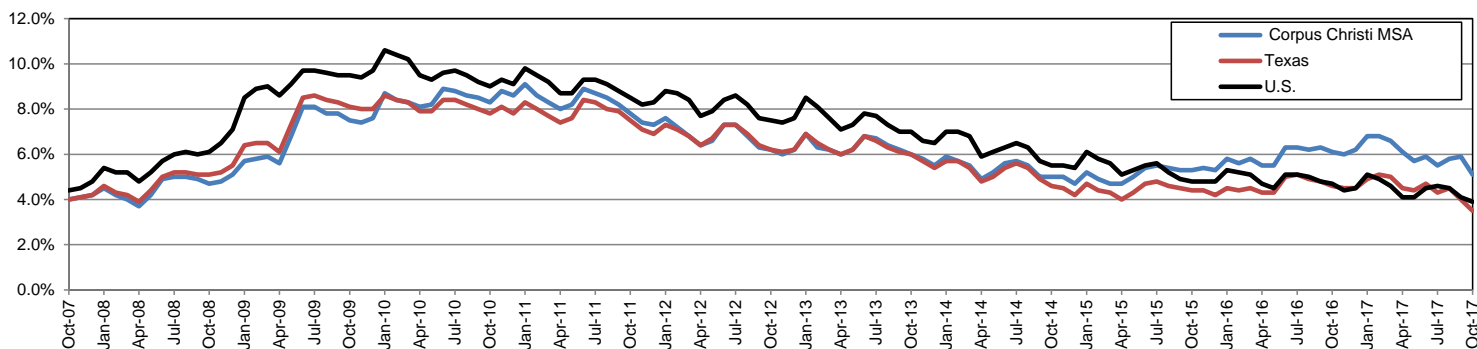
Annual Growth Rate for Total Nonagricultural Employment



Unemployment Information (all estimates in thousands)

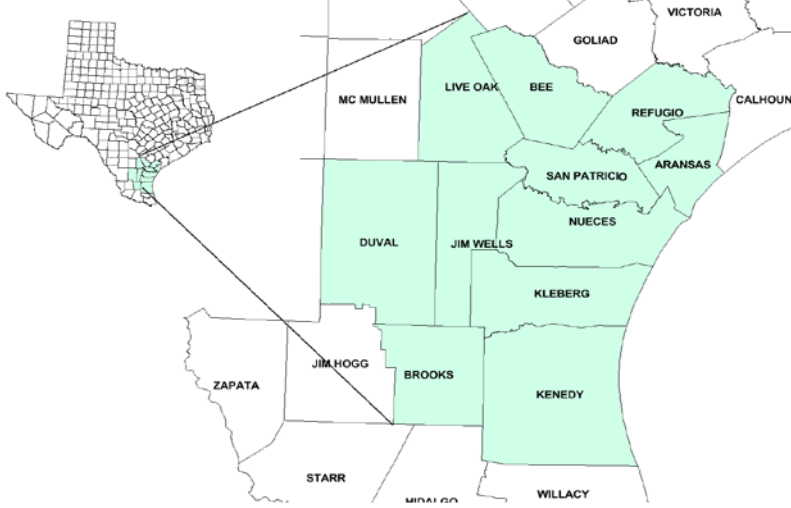
	Corpus Christi MSA				Texas (Actual)				United States (Actual)			
	C.L.F.	Emp.	Unemp.	Rate	C.L.F.	Emp.	Unemp.	Rate	C.L.F.	Emp.	Unemp.	Rate
Oct-17	208.9	198.2	10.6	5.1	13,392.3	12,922.1	470.2	3.5	160,465.0	154,223.0	6,242.0	3.9
Sep-17	210.3	197.8	12.5	5.9	13,498.7	12,954.8	543.9	4.0	161,049.0	154,494.0	6,556.0	4.1
Oct-16	205.3	192.9	12.4	6.1	13,338.7	12,725.9	612.9	4.6	159,783.0	152,335.0	7,447.0	4.7

Historical Unemployment Rates



Coastal Bend Workforce Development Area

October 2017



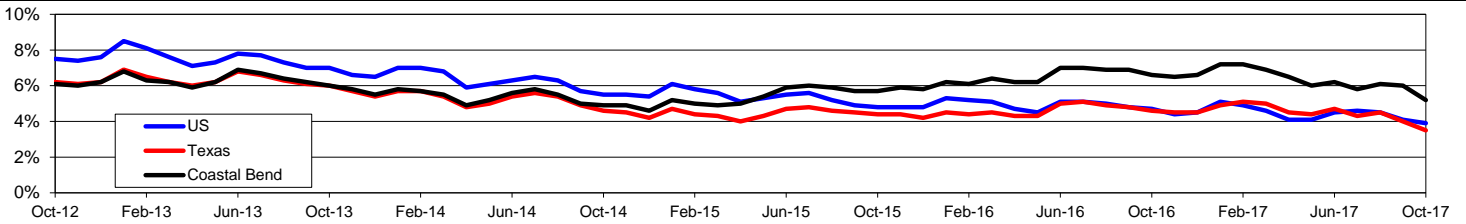
WDA Labor Force Statistics				
	Oct-17	Sep-17	Oct-16	OTY
CLF	262,968	264,363	261,761	1,207
Employed	249,422	248,571	244,587	4,835
Unemployed	13,546	15,792	17,174	-3,628
Rate	5.2%	6.0%	6.6%	-1.4%

Texas Labor Force Statistics				
	Oct-17	Sep-17	Oct-16	OTY
CLF	13,392,285	13,498,742	13,338,725	53,560
Employed	12,922,084	12,954,820	12,725,859	196,225
Unemployed	470,201	543,922	612,866	-142,665
Rate	3.5%	4.0%	4.6%	-1.1%

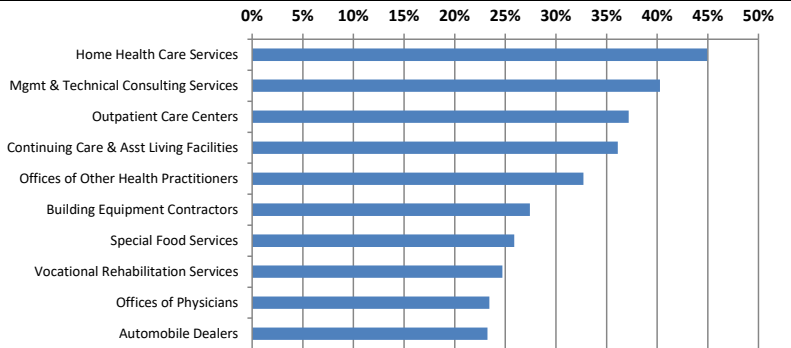
US Labor Force Statistics				
	Oct-17	Sep-17	Oct-16	OTY
CLF	160,465,000	161,049,000	159,783,000	682,000
Employed	154,223,000	154,494,000	152,335,000	1,888,000
Unemployed	6,242,000	6,556,000	7,447,000	-1,205,000
Rate	3.9%	4.1%	4.7%	-0.8%

Continued Claims for the Week of the 12th				
	Oct-17	Sep-17	Oct-16	OTY
WDA	3,839	4,256	4,062	-223
Texas	104,802	115,057	124,901	-20,099

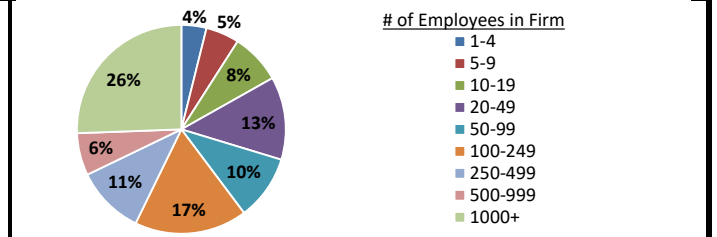
Historical Unemployment Rates



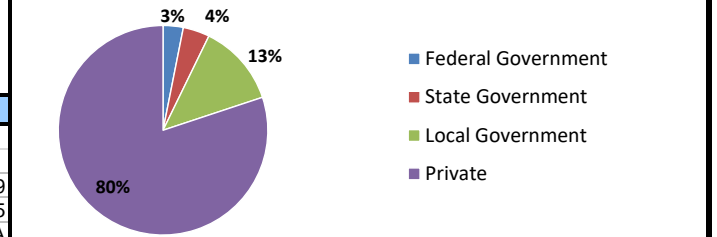
Projected Fastest Growing Industries in WDA (% growth 2014-2024)



Employment by Size Class (2nd Quarter 2017)



Employment by Ownership (2nd Quarter 2017)



Average Weekly Wage (2nd Quarter 2017)

	Q2 2017	Q1 2017	Q2 2016	Change	
				Quarter	Year
WDA	\$837	\$879	\$818	-\$42	\$19
Texas	\$1,026	\$1,124	\$1,000	-\$99	\$25
US	N/A	\$1,111	\$988	N/A	N/A

Employment by Industry (2nd Quarter 2017, Percent Change)

Industry	Employment	% of total	% Change	
			Quarter	Year
Natural resources and mining	10,469	4.4%	6.9%	11.4%
Construction	24,645	10.3%	-0.1%	6.8%
Manufacturing	12,376	5.2%	-1.1%	-6.1%
Trade, transportation and utilities	43,129	18.1%	0.8%	-1.7%
Information	2,119	0.9%	-0.9%	-5.8%
Financial activities	9,417	4.0%	1.8%	0.1%
Professional and business services	18,424	7.7%	0.1%	-0.4%
Education and health services	66,756	28.0%	0.1%	1.9%
Leisure and hospitality	32,659	13.7%	6.5%	0.3%
Other services	6,127	2.6%	1.9%	-5.9%
Public administration	12,027	5.1%	0.1%	0.7%
Total	238,148	100.0%	1.4%	0.8%

Employment by Industry (2nd Quarter 2017)

