

Coastal Bend Workforce Area

(Not Seasonally Adjusted Unemployment Rates)

Area	Area Type	Latest Monthly Data October 2014						Previous Monthly Data September 2014				Year Ago October 2013			
		Labor Force	Employment	Unemployment	Rate	M+-	Y+-	Labor Force	Employment	Unemployment	Rate	Labor Force	Employment	Unemployment	Rate
United States	Nation	156,616,000	147,936,000	8,680,000	5.5	-0.2	-1.5	155,903,000	146,941,000	8,962,000	5.7	154,918,000	144,144,000	10,773,000	7.0
Texas	State	13,067,745	12,442,144	625,601	4.8	-0.2	-1.3	13,043,728	12,389,865	653,863	5.0	12,824,150	12,043,070	781,080	6.1
Corpus Christi	MSA	221,993	211,198	10,795	4.9	0.1	-1.0	220,935	210,231	10,704	4.8	217,824	205,064	12,760	5.9
Coastal Bend	WDA	301,108	286,910	14,198	4.7	0.0	-1.0	300,417	286,225	14,192	4.7	297,299	280,498	16,801	5.7
Aransas	County	11,286	10,730	556	4.9	0.1	-1.1	11,221	10,681	540	4.8	11,079	10,419	660	6.0
Bee	County	13,225	12,511	714	5.4	-0.1	-0.8	13,442	12,703	739	5.5	13,793	12,942	851	6.2
Brooks	County	3,409	3,217	192	5.6	-0.2	-1.0	3,431	3,233	198	5.8	3,471	3,243	228	6.6
Duval	County	6,097	5,780	317	5.2	0.0	-0.6	6,136	5,819	317	5.2	6,090	5,737	353	5.8
Jim Wells	County	24,646	23,647	999	4.1	0.0	-0.7	24,669	23,663	1,006	4.1	24,918	23,718	1,200	4.8
Kenedy	County	280	274	6	2.1	0.0	-1.5	281	275	6	2.1	277	267	10	3.6
Kleberg	County	18,380	17,607	773	4.2	-0.2	-0.9	18,511	17,699	812	4.4	18,086	17,159	927	5.1
Live Oak	County	7,301	7,078	223	3.1	-0.1	-0.6	7,292	7,061	231	3.2	7,312	7,044	268	3.7
McMullen	County	1,030	1,010	20	1.9	-0.3	-1.4	960	939	21	2.2	815	788	27	3.3
Nueces	County	180,734	172,517	8,217	4.5	-0.2	-1.1	180,174	171,727	8,447	4.7	177,448	167,506	9,942	5.6
Refugio	County	4,746	4,588	158	3.3	0.0	-0.5	4,761	4,602	159	3.3	4,713	4,536	177	3.8
San Patricio	County	29,974	27,951	2,023	6.7	0.9	-0.7	29,539	27,823	1,716	5.8	29,297	27,139	2,158	7.4

(M+-) Change in unemployment rate from last month (Increase) (Decrease)

(Y+-) Change in unemployment rate from last year (Increase) (Decrease)

- Earnings for all occupations Coastal Bend, expressed as hourly rate (TWC):

Coastal Bend	All Occupations-	Average \$18.35/hr.	Entry level \$8.58/hr.	Experienced workers \$23.24/hr.	Top 10% \$33.56/hr.
Texas	All Occupations-	Average \$20.97/hr.	Entry level \$8.88/hr.	Experienced workers \$ 27.02/hr.	Top 10% \$39.64/hr.

- Educational Attainment for population 25 years of age and older - Corpus Christi (Census American Fact Finder/American Community Survey):

Less than 9 th grade	8.7%	12 th grade & GED	27.7%	Associates degree	7.0%	Graduate or Professional degrees	8.4%
9 th thru 11 th grade	9.3%	Some College	25.1%	Bachelors degree	13.8%		

- Median earnings Corpus Christi by education for persons 25 years of age & up (Census AFF/ACS): **\$27,211** (\$36,380 male/ \$22,328 female)

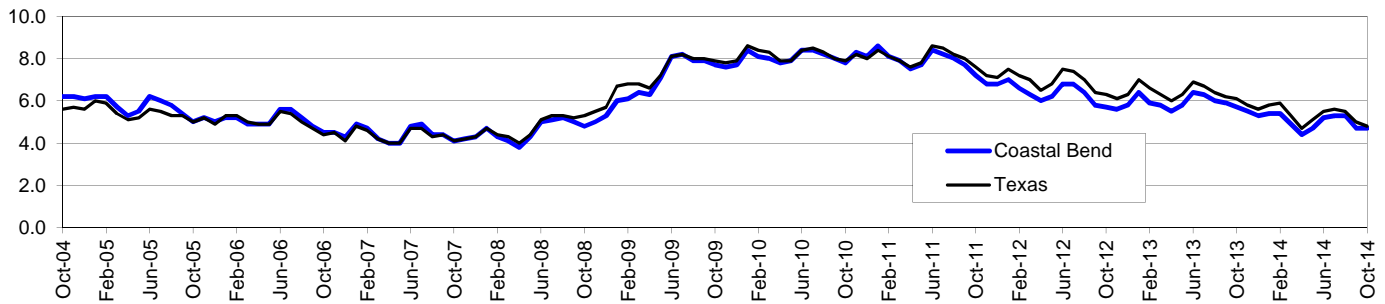
Less than High School	\$15,437	Some College or Associates	\$28,739	Graduate or Professional	\$56,681
High School & GED	\$26,818	Bachelor's	\$44,078		

Coastal Bend Workforce Development Area*

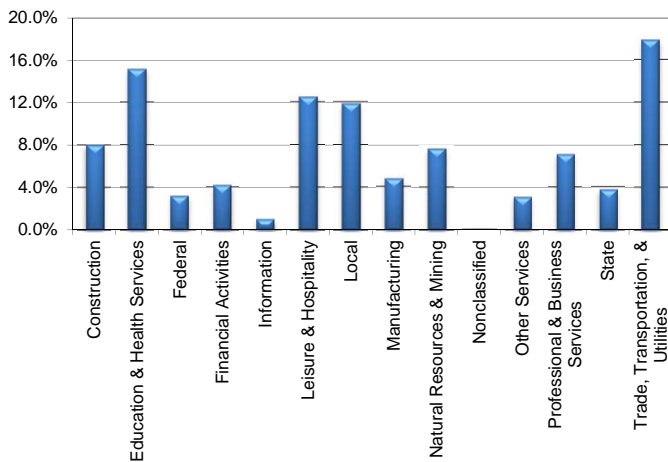
October, 2014

Coastal Bend WDA					Texas				
	CLF	Employed	Unemployed	Rate		CLF	Employed	Unemployed	Rate
Oct-14	301,108	286,910	14,198	4.7	Oct-14	13,067,745	12,442,144	625,601	4.8
Sep-14	300,417	286,225	14,192	4.7	Sep-14	13,043,728	12,389,865	653,863	5.0
Oct-13	297,299	280,498	16,801	5.7	Oct-13	12,824,150	12,043,070	781,080	6.1

Historical Unemployment Rates



Coastal Bend WDA Industry Composition 2nd Quarter 2014



Total WDA Claims

Continued Claims for the Week of the 12th

	Oct-14	Sep-14	Oct-13	OTY
Continued	2,554	2,211	2,589	-35

Texas Unemployment Insurance Claims

Continued Claims for the Week of the 12th

	Oct-14	Sep-14	Oct-13	OTY
Continued	98,385	105,340	119,167	-20,782

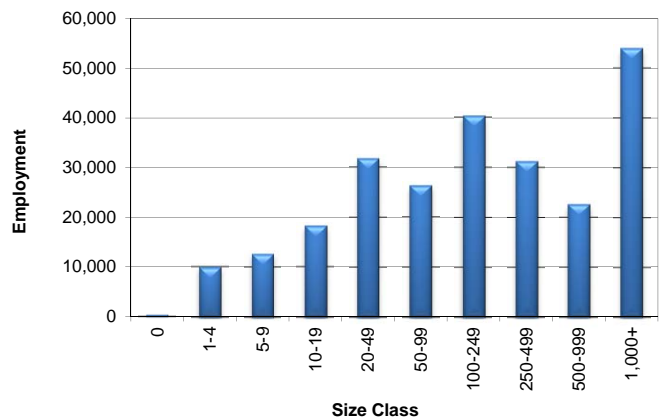
Coastal Bend WDA Average Weekly Wage

	Coastal Bend	Texas
2nd Quarter 2014	\$829.32	\$973.65
1st Quarter 2014	\$855.01	\$1,062.26
2nd Quarter 2013	\$801.84	\$944.12
Quarter Change	-\$25.69	-\$88.61
OTY Change	\$27.48	\$29.53

NAICS Covered Employment Quarterly Data 2nd Quarter 2014

SUPER SECTOR	Employment	Change	
		Quarter	Year
Construction	19,806	40	1,612
Education & Health Services	37,326	253	-1,100
Federal	7,784	16	-340
Financial Activities	10,417	307	425
Information	2,401	50	17
Leisure & Hospitality	30,874	1,855	1,053
Local	29,290	-77	144
Manufacturing	11,763	209	313
Natural Resources & Mining	18,815	265	76
Nonclassified	29	6	-16
Other Services	7,565	233	283
Professional & Business Services	17,536	191	-158
State	9,280	-123	-50
Trade, Transportation, & Utilities	44,119	402	1,398
TOTAL	247,005	3,627	3,657

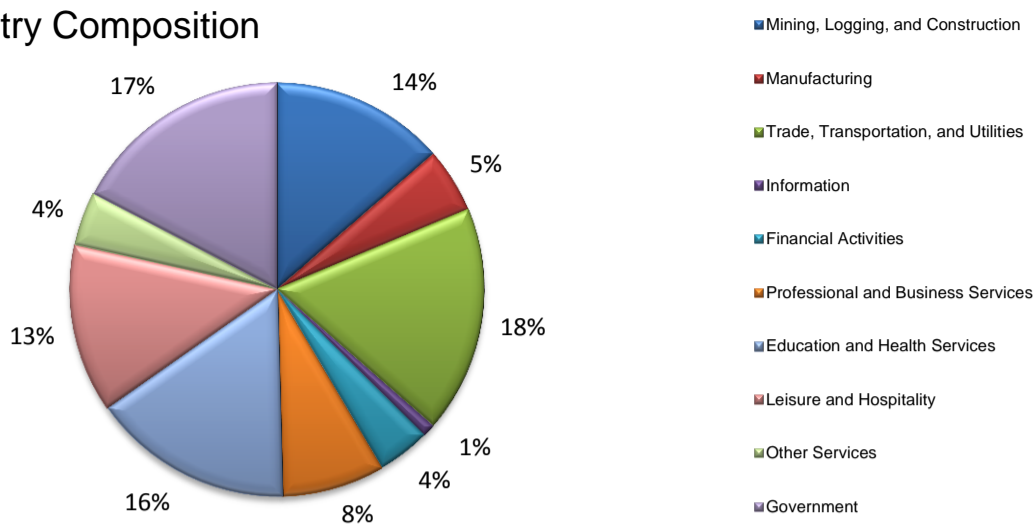
Size Class Employment Composition 2nd Quarter 2014



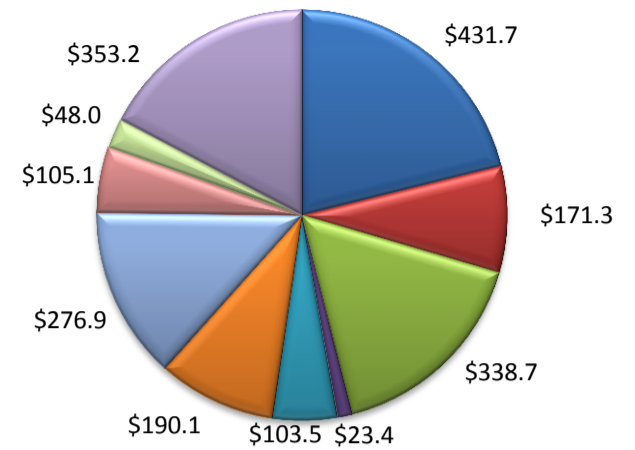
*Counties in WDA: Aransas, Bee, Brooks, Duval, Jim Wells, Kenedy, Kleberg, Live Oak, McMullen, Nueces, Refugio, & San Patricio

(Aransas, Nueces, San Patricio)

Industry Composition



Wages by Industry (in millions)
2nd Quarter 2014



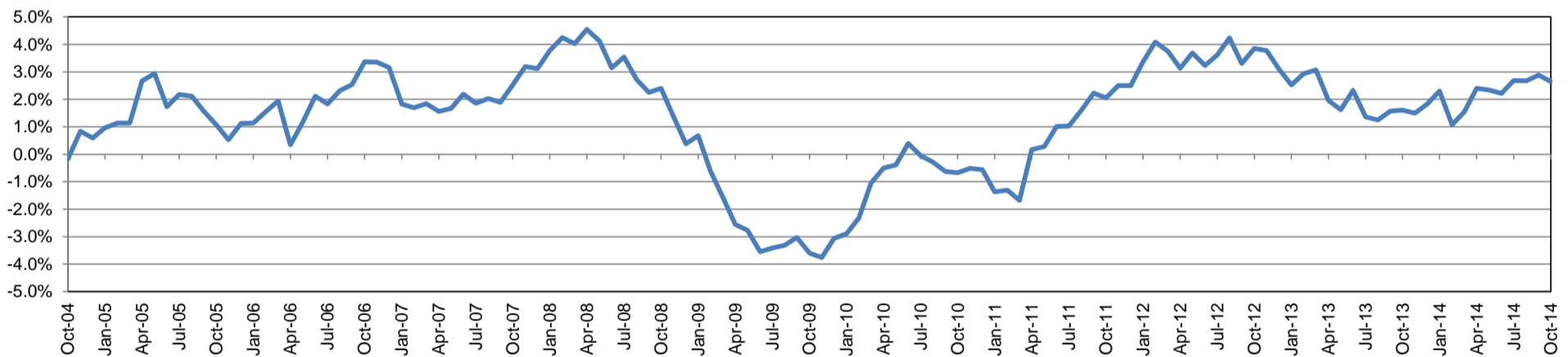
Employment by Industry

	Oct-14	Sep-14	Oct-13	Monthly Change		Annual Change	
				Actual	%	Actual	%
Total Nonfarm	194,200	193,000	189,200	1,200	0.6%	5,000	2.6%
Mining, Logging, and Construction	26,400	26,000	24,800	400	1.5%	1,600	6.5%
Manufacturing	9,900	9,800	9,800	100	1.0%	100	1.0%
Trade, Transportation, and Utilities	34,400	34,200	33,900	200	0.6%	500	1.5%
Information	2,000	2,000	2,000	0	0.0%	0	0.0%
Financial Activities	8,000	8,100	7,900	-100	-1.2%	100	1.3%
Professional and Business Services	15,600	15,500	15,700	100	0.7%	-100	-0.6%
Education and Health Services	30,500	30,400	29,700	100	0.3%	800	2.7%
Leisure and Hospitality	25,500	26,000	23,800	-500	-1.9%	1,700	7.1%
Other Services	8,200	8,200	7,800	0	0.0%	400	5.1%
Government	33,700	32,800	33,800	900	2.7%	-100	-0.3%

Industry Size Class

Size Class	Employees per firm	Number of Firms	June 2014	
			Employment in Size Class	% Total Employment
9	1000+	18	41,641	22.0%
8	500-999	24	16,019	8.5%
7	250-499	59	19,792	10.5%
6	100-249	221	33,187	17.5%
5	50-99	315	21,781	11.5%
4	20-49	827	25,019	13.2%
3	10-19	1,065	14,469	7.6%
2	5-9	1,490	9,861	5.2%
1	1-4	3,637	7,564	4.0%
0	0	524	0	0.0%
Total		8,180	189,333	100.0%

Annual Growth Rate for Total Nonagricultural Employment



Unemployment Information (all estimates in thousands)

	Corpus Christi MSA				Texas (Actual)				United States (Actual)			
	C.L.F.	Emp.	Unemp.	Rate	C.L.F.	Emp.	Unemp.	Rate	C.L.F.	Emp.	Unemp.	Rate
Oct-14	222.0	211.2	10.8	4.9	13,067.7	12,442.1	625.6	4.8	156,616.0	147,936.0	8,680.0	5.5
Sep-14	220.9	210.2	10.7	4.8	13,043.8	12,389.9	653.9	5.0	155,903.0	146,941.0	8,962.0	5.7
Oct-13	217.9	205.1	12.8	5.9	12,824.2	12,043.1	781.1	6.1	154,918.0	144,144.0	10,773.0	7.0

Historical Unemployment Rates

