

# Coastal Bend Workforce Area

Area	Area Type	Latest Monthly Data November 2011						Previous Monthly Data October 2011				Year Ago November 2010			
		Labor Force	Employment	Unemployment	Rate	M+-	Y+-	Labor Force	Employment	Unemployment	Rate	Labor Force	Employment	Unemployment	Rate
United States	Nation	153,683,000	141,070,000	12,613,000	8.2	-0.3	-1.1	154,088,000	140,987,000	13,102,000	8.5	153,689,000	139,415,000	14,282,000	9.3
Texas	State	12,344,777	11,423,828	920,949	7.5	-0.5	-0.7	12,366,963	11,378,368	988,595	8.0	12,212,305	11,207,071	1,005,234	8.2
Corpus Christi	MSA	219,936	204,407	15,529	7.1	-0.4	-1.2	220,027	203,455	16,572	7.5	213,915	196,198	17,717	8.3
Coastal Bend	WDA	291,135	270,741	20,394	7	-0.5	-1.3	291,196	269,361	21,835	7.5	283,586	260,184	23,402	8.3
Aransas	County	12,271	11,400	871	7.1	-0.4	-0.8	12,269	11,347	922	7.5	11,875	10,942	933	7.9
Bee	County	12,437	11,415	1,022	8.2	-0.6	-1.2	12,578	11,476	1,102	8.8	12,457	11,292	1,165	9.4
Brooks	County	3,273	2,991	282	8.6	-1	-1.5	3,233	2,922	311	9.6	3,212	2,889	323	10.1
Duval	County	5,440	4,974	466	8.6	-0.4	-2.4	5,453	4,962	491	9.0	5,308	4,726	582	11.0
Jim Wells	County	22,031	20,606	1,425	6.5	-0.6	-1.6	21,915	20,351	1,564	7.1	21,111	19,409	1,702	8.1
Kenedy	County	240	226	14	5.8	-0.4	1.5	241	226	15	6.2	235	225	10	4.3
Kleberg	County	17,348	16,262	1,086	6.3	-0.4	-0.9	17,454	16,279	1,175	6.7	17,428	16,177	1,251	7.2
Live Oak	County	5,731	5,423	308	5.4	-0.6	-1.1	5,562	5,230	332	6.0	5,302	4,955	347	6.5
McMullen	County	477	452	25	5.2	-0.7	-0.8	475	447	28	5.9	382	359	23	6.0
Nueces	County	175,370	163,379	11,991	6.8	-0.6	-1.1	175,524	162,618	12,906	7.4	170,261	156,817	13,444	7.9
Refugio	County	4,221	3,984	237	5.6	-0.1	-1.1	4,256	4,012	244	5.7	4,236	3,954	282	6.7
San Patricio	County	32,296	29,629	2,667	8.3	-0.2	-2.2	32,236	29,491	2,745	8.5	31,779	28,439	3,340	10.5

(M+-) Change in unemployment rate from last month (Increase) (Decrease)

(Y+-) Change in unemployment rate from last year (Increase) (Decrease)

- Earnings for all occupations Coastal Bend, expressed as hourly rate (TWC):

Coastal Bend	All Occupations-	Average \$17.28/hr.	Entry level \$8.30/hr.	Experienced workers \$21.77/hr.	Top 10% \$31.60/hr.
Texas	All Occupations-	Average \$20.30/hr.	Entry level \$9.62/hr.	Experienced workers \$ 25.68/hr.	Top 10% \$37.83/hr.

- Educational Attainment for population 25 years of age and older - Corpus Christi (Census American Fact Finder/American Community Survey):

Less than 9 <sup>th</sup> grade	9.3%	12 <sup>th</sup> grade & GED	26.7%	Associates degree	7.4%	Graduate or Professional degrees	7.0%
9 <sup>th</sup> thru 11 <sup>th</sup> grade	11.8%	Some College	24.7%	Bachelors degree	13.0%		

- Median earnings Corpus Christi by education for persons 25 years of age & up (Census AFF/ACS): \$27,211 (\$36,380 male/ \$22,328 female)

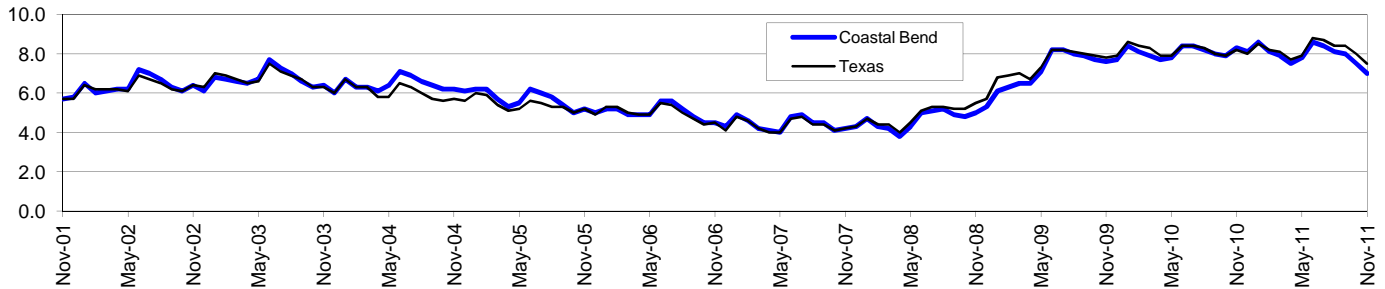
Less than High School	\$15,545	Some College or Associates	\$31,460	Graduate or Professional	\$54,717
High School & GED	\$23,028	Bachelor's	\$43,005		

# Coastal Bend Workforce Development Area\*

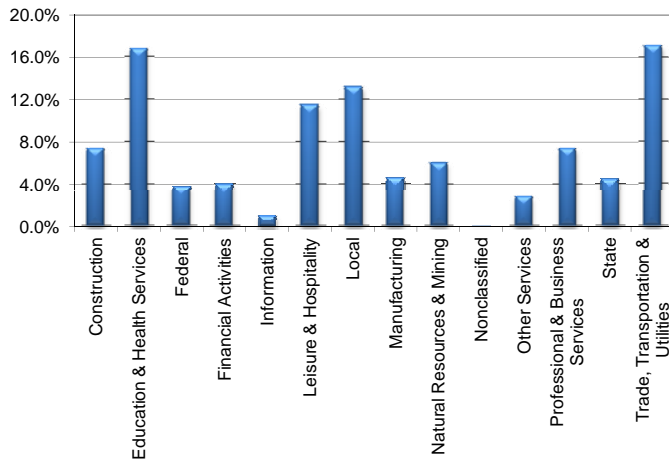
## November 2011

Coastal Bend WDA					Texas				
	CLF	Employed	Unemployed	Rate		CLF	Employed	Unemployed	Rate
Nov-11	291,135	270,741	20,394	7.0	Nov-11	12,344,777	11,423,828	920,949	7.5
Oct-11	291,196	269,361	21,835	7.5	Oct-11	12,366,963	11,378,368	988,595	8.0
Nov-10	283,586	260,184	23,402	8.3	Nov-10	12,212,305	11,207,071	1,005,234	8.2

### Historical Unemployment Rates



### Coastal Bend WDA Industry Composition 2nd Quarter 2011



### Total WDA Claims

	Nov-11	Oct-11	Nov-10	OTY
Initial	1,843	1,700	2,526	-683
Continued	6,733	5,931	9,221	-2,488
Continued Claims for the Week of the 12th				
Continued	2,755	2,672	3,819	-1,064

### Texas Unemployment Insurance Claims Filed

	Nov-11	Oct-11	Nov-10	OTY
Initial	86,141	85,204	85,666	475
Continued	785,704	807,989	887,513	-101,809
Continued Claims for the Week of the 12th				
Continued	170,215	174,199	190,017	-19,802

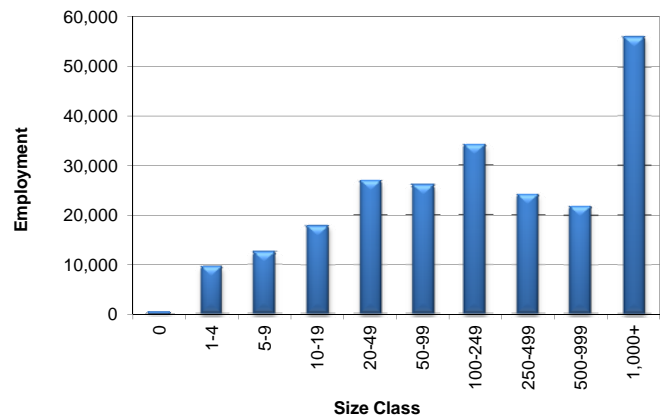
### Coastal Bend WDA Average Weekly Wage

	Coastal Bend	WDA Qtr. Chg.	Texas
2nd Quarter 2011	\$751.33	\$17.55	\$899.79
1st Quarter 2011	\$733.78	WDA OTY Chg.	\$944.37
2nd Quarter 2010	\$711.05	\$40.28	\$863.86

### NAICS Covered Employment Quarterly Data 2nd Quarter 2011

SUPER SECTOR	Employment	Change	
		Quarter	Year
Construction	17,029	870	540
Education & Health Services	38,487	669	931
Federal	8,568	49	-576
Financial Activities	9,190	203	121
Information	2,301	28	-177
Leisure & Hospitality	26,326	1,925	217
Local	30,232	-319	-617
Manufacturing	10,607	217	421
Natural Resources & Mining	13,927	874	2,883
Nonclassified	32	-8	7
Other Services	6,454	197	73
Professional & Business Services	17,077	99	277
State	10,219	-523	-87
Trade, Transportation & Utilities	39,216	1,113	466
<b>TOTAL</b>	<b>229,665</b>	<b>5,394</b>	<b>4,479</b>

### Size Class Employment Composition 2nd Quarter 2011

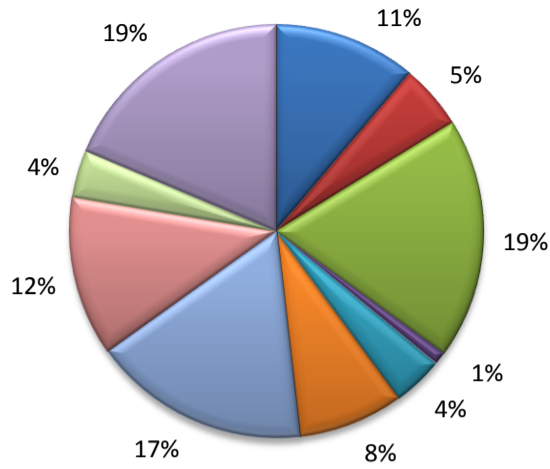


\*Counties in WDA: Aransas, Bee, Brooks, Duval, Jim Wells, Kenedy, Kleberg, Live Oak, McMullen, Nueces, Refugio, & San Patricio

Available at <http://www.tracer2.com/>

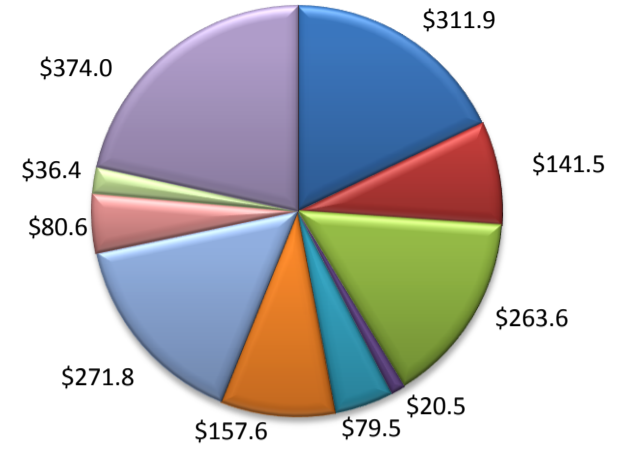
(Aransas, Nueces, San Patricio)

Industry Composition



- Mining, Logging, and Construction
- Manufacturing
- Trade, Transportation, and Utilities
- Information
- Financial Activities
- Professional and Business Services
- Education and Health Services
- Leisure and Hospitality
- Other Services
- Government

Wages by Industry (in millions)  
2nd Quarter 2011



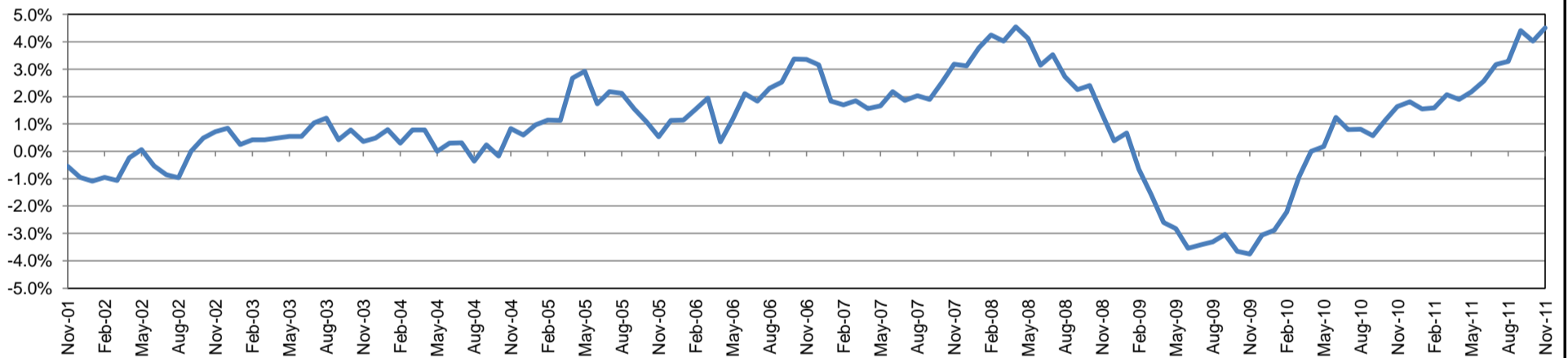
Employment by Industry

	Nov-11	Oct-11	Nov-10	Monthly Change		Annual Change	
				Actual	%	Actual	%
Total Nonfarm	187,800	186,000	179,700	1,800	1.0%	8,100	4.5%
Mining, Logging, and Construction	20,900	21,000	19,800	-100	-0.5%	1,100	5.6%
Manufacturing	9,500	9,400	9,300	100	1.1%	200	2.2%
Trade, Transportation, and Utilities	35,400	34,100	31,500	1,300	3.8%	3,900	12.4%
Information	1,800	1,800	2,100	0	0.0%	-300	-14.3%
Financial Activities	7,400	7,300	7,200	100	1.4%	200	2.8%
Professional and Business Services	15,500	15,500	15,300	0	0.0%	200	1.3%
Education and Health Services	31,900	31,900	31,100	0	0.0%	800	2.6%
Leisure and Hospitality	23,400	23,400	20,500	0	0.0%	2,900	14.2%
Other Services	7,000	7,000	6,800	0	0.0%	200	2.9%
Government	35,000	34,600	36,100	400	1.2%	-1,100	-3.1%

Industry Size Class

Size Class	Employees per firm	Number of Firms	June 2011		
			Employment in Size Class	% Total Employment	
9	1000+	18	42,697	24.0%	
8	500-999	26	18,176	10.2%	
7	250-499	43	14,223	8.0%	
6	100-249	181	27,633	15.5%	
5	50-99	314	21,909	12.3%	
4	20-49	711	21,696	12.2%	
3	10-19	1,065	14,458	8.1%	
2	5-9	1,477	9,832	5.5%	
1	1-4	3,589	7,536	4.2%	
0	0	588	0	0.0%	
Total			8,012	178,160	100.0%

Annual Growth Rate for Total Nonagricultural Employment



Unemployment Information (all estimates in thousands)

	Corpus Christi MSA				Texas (Actual)				United States (Actual)			
	C.L.F.	Emp.	Unemp.	Rate	C.L.F.	Emp.	Unemp.	Rate	C.L.F.	Emp.	Unemp.	Rate
Nov-11	219.9	204.4	15.5	7.1	12,344.7	11,423.8	920.9	7.5	153,683.0	141,070.0	12,613.0	8.2
Oct-11	220.1	203.5	16.6	7.5	12,367.0	11,378.4	988.6	8.0	154,088.0	140,987.0	13,102.0	8.5
Nov-10	213.9	196.2	17.7	8.3	12,212.3	11,207.1	1,005.2	8.2	153,698.0	139,415.0	14,282.0	9.3

Historical Unemployment Rates

