

Coastal Bend Workforce Area

(Not Seasonally Adjusted Unemployment Rates by WDA, MSA, & County)

Area	Area Type	Latest Monthly Data May 2014						Previous Monthly Data April 2014				Year Ago May 2013			
		Labor Force	Employment	Unemployment	Rate	M+-	Y+-	Labor Force	Employment	Unemployment	Rate	Labor Force	Employment	Unemployment	Rate
United States	Nation	155,841,000	146,398,000	9,443,000	6.1	0.2	-1.2	154,845,000	145,767,000	9,079,000	5.9	155,734,000	144,432,000	11,302,000	7.3
Texas	State	12,969,284	12,313,680	655,604	5.1	0.4	-1.2	12,930,211	12,317,377	612,834	4.7	12,821,102	12,015,941	805,161	6.3
Corpus Christi	MSA	221,423	210,613	10,810	4.9	0.3	-1.0	221,755	211,634	10,121	4.6	219,222	206,209	13,013	5.9
Coastal Bend	WDA	301,827	287,498	14,329	4.7	0.3	-1.1	302,140	288,776	13,364	4.4	298,592	281,316	17,276	5.8
Aransas	County	11,238	10,701	537	4.8	0.7	-0.9	11,208	10,752	456	4.1	11,113	10,477	636	5.7
Bee	County	13,635	12,917	718	5.3	0.5	-1.3	13,808	13,144	664	4.8	13,737	12,825	912	6.6
Brooks	County	3,554	3,359	195	5.5	0.6	-1.7	3,553	3,378	175	4.9	3,528	3,274	254	7.2
Duval	County	6,238	5,920	318	5.1	0.2	-0.9	6,160	5,857	303	4.9	6,046	5,682	364	6.0
Jim Wells	County	24,741	23,684	1,057	4.3	0.3	-0.6	24,797	23,816	981	4.0	24,657	23,437	1,220	4.9
Kenedy	County	286	278	8	2.8	0.0	-0.1	287	279	8	2.8	280	272	8	2.9
Kleberg	County	18,705	17,884	821	4.4	0.4	-1.0	18,699	17,955	744	4.0	18,500	17,499	1,001	5.4
Live Oak	County	7,402	7,171	231	3.1	0.2	-0.9	7,308	7,099	209	2.9	7,160	6,873	287	4.0
McMullen	County	994	979	15	1.5	0.1	-1.4	973	959	14	1.4	788	765	23	2.9
Nueces	County	180,455	172,039	8,416	4.7	0.3	-1.0	180,790	172,873	7,917	4.4	178,662	168,442	10,220	5.7
Refugio	County	4,850	4,693	157	3.2	0.2	-1.0	4,801	4,656	145	3.0	4,674	4,480	194	4.2
San Patricio	County	29,729	27,873	1,856	6.2	0.3	-1.1	29,756	28,008	1,748	5.9	29,447	27,290	2,157	7.3

(M+-) Change in unemployment rate from last month (Increase) (Decrease)

(Y+-) Change in unemployment rate from last year (Increase) (Decrease)

- Earnings for all occupations Coastal Bend, expressed as hourly rate (TWC):

Coastal Bend	All Occupations-	Average \$18.35/hr.	Entry level \$8.58/hr.	Experienced workers \$23.24/hr.	Top 10% \$33.56/hr.
Texas	All Occupations-	Average \$20.97/hr.	Entry level \$8.88/hr.	Experienced workers \$ 27.02/hr.	Top 10% \$39.64/hr.

- Educational Attainment for population 25 years of age and older - Corpus Christi (Census American Fact Finder/American Community Survey):

Less than 9 th grade	9.6%	12 th grade & GED	26.9%	Associates degree	6.9%	Graduate or Professional degrees	7.0%
9 th thru 11 th grade	11.2%	Some College	25.8%	Bachelors degree	12.6%		

- Median earnings Corpus Christi by education for persons 25 years of age & up (Census AFF/ACS): **\$27,211** (\$36,380 male/ \$22,328 female)

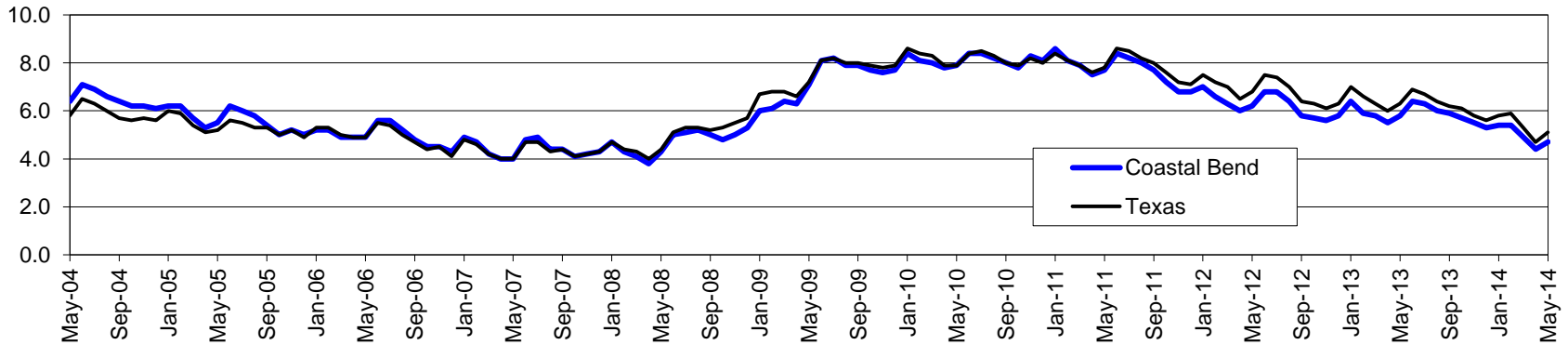
Less than High School	\$17,318	Some College or Associates	\$31,393	Graduate or Professional	\$55,582
High School & GED	\$25,804	Bachelor's	\$45,812		

Coastal Bend Workforce Development Area*

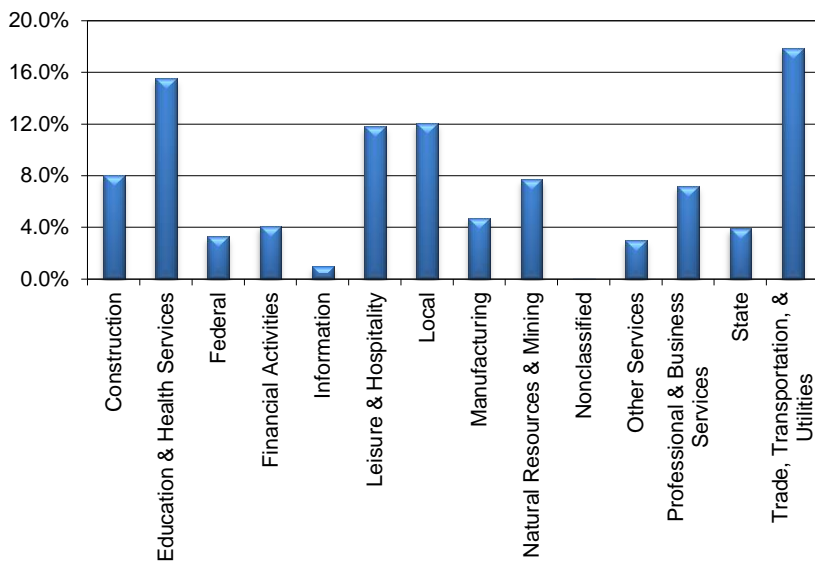
May 2014

Coastal Bend WDA					Texas				
	CLF	Employed	Unemployed	Rate		CLF	Employed	Unemployed	Rate
May-14	301,827	287,498	14,329	4.7	May-14	12,969,284	12,313,680	655,604	5.1
Apr-14	302,140	288,776	13,364	4.4	Apr-14	12,930,211	12,317,377	612,834	4.7
May-13	298,592	281,316	17,276	5.8	May-13	12,821,102	12,015,941	805,161	6.3

Historical Unemployment Rates



Coastal Bend WDA Industry Composition 4th Quarter 2013



Total WDA Claims

Continued Claims for the Week of the 12th

	May-14	Apr-14	May-13	OTY
Continued	2,545	2,675	2,689	-144

Texas Unemployment Insurance Claims

Continued Claims for the Week of the 12th

	May-14	Apr-14	May-13	OTY
Continued	119,244	123,327	127,661	-8,417

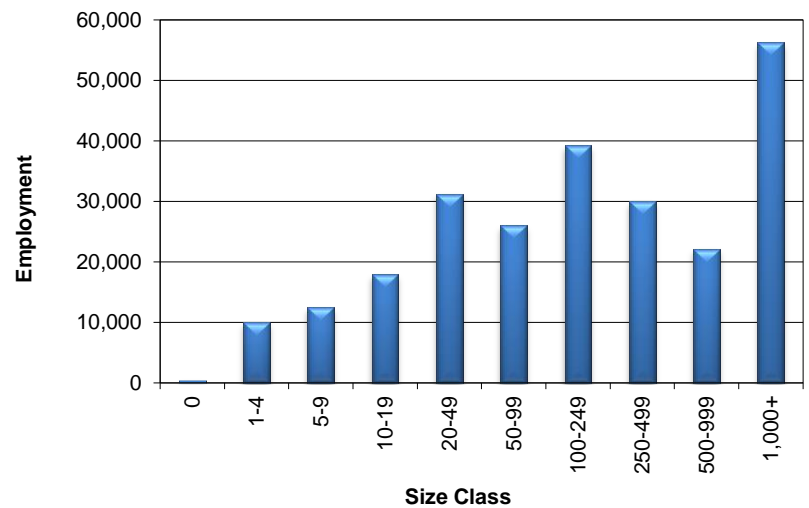
Coastal Bend WDA Average Weekly Wage

	Coastal Bend	Texas
4th Quarter 2013	\$860.01	\$1,026.61
3rd Quarter 2013	\$807.87	\$951.89
4th Quarter 2012	\$865.44	\$1,027.11
Quarter Change	\$52.14	\$74.72
OTY Change	-\$5.43	-\$0.50

NAICS Covered Employment Quarterly Data 4th Quarter 2013

SUPER SECTOR	Employment	Change	
		Quarter	Year
Construction	19,584	736	1,573
Education & Health Services	38,063	-245	-586
Federal	8,003	-98	-555
Financial Activities	10,068	-52	428
Information	2,393	32	55
Leisure & Hospitality	28,950	-989	1,414
Local	29,447	1,985	255
Manufacturing	11,525	4	103
Natural Resources & Mining	18,825	60	289
Nonclassified	91	40	45
Other Services	7,267	-87	50
Professional & Business Services	17,610	151	127
State	9,505	440	-254
Trade, Transportation, & Utilities	43,767	561	1,222
TOTAL	245,098	2,538	4,166

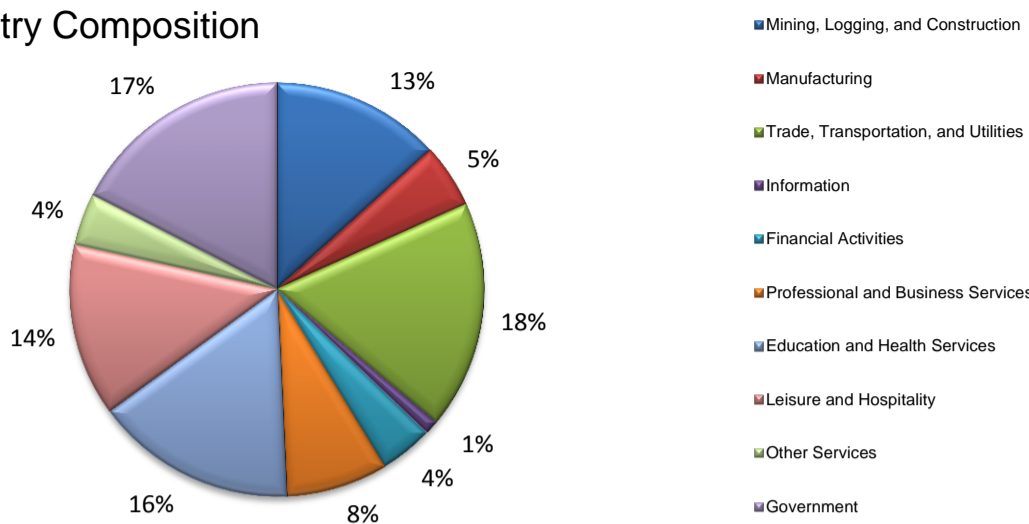
Size Class Employment Composition 4th Quarter 2013



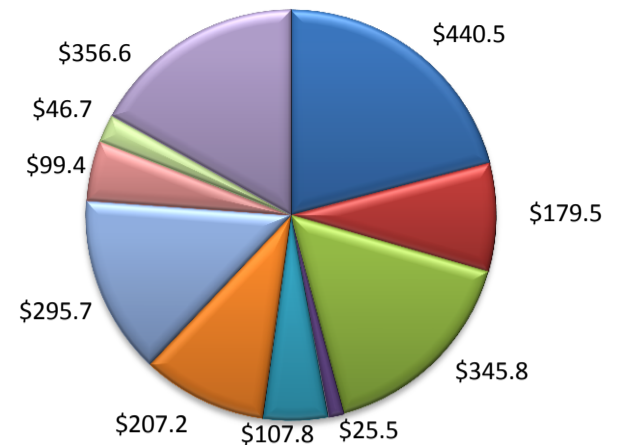
*Counties in WDA: Aransas, Bee, Brooks, Duval, Jim Wells, Kenedy, Kleberg, Live Oak, McMullen, Nueces, Refugio, & San Patricio

(Aransas, Nueces, San Patricio)

Industry Composition



Wages by Industry (in millions)
4th Quarter 2013



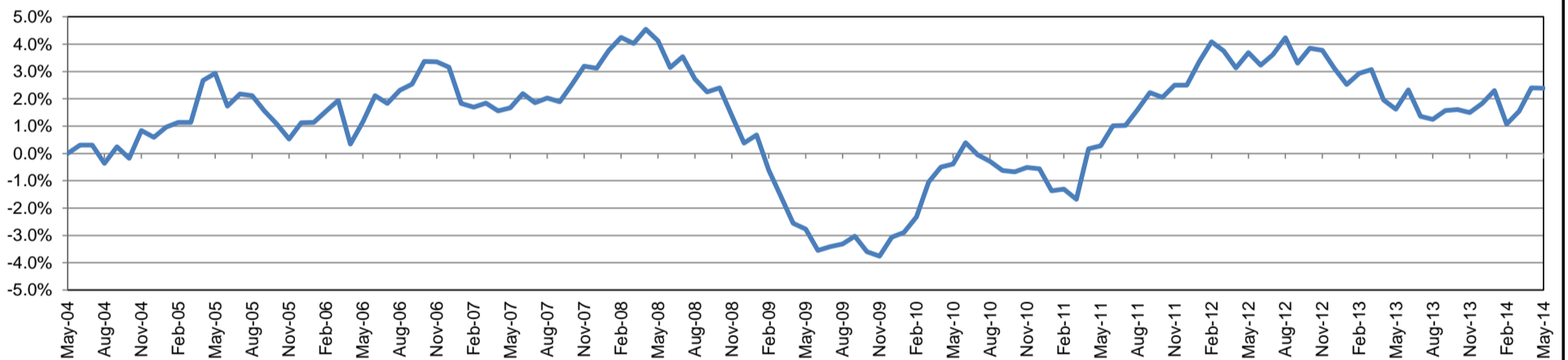
Employment by Industry

	May-14	Apr-14	May-13	Monthly Change		Annual Change	
				Actual	%	Actual	%
Total Nonfarm	193,200	192,500	188,700	700	0.4%	4,500	2.4%
Mining, Logging, and Construction	25,600	25,900	23,900	-300	-1.2%	1,700	7.1%
Manufacturing	9,700	9,700	9,700	0	0.0%	0	0.0%
Trade, Transportation, and Utilities	34,400	34,200	33,600	200	0.6%	800	2.4%
Information	2,100	2,000	2,100	100	5.0%	0	0.0%
Financial Activities	8,000	7,900	7,700	100	1.3%	300	3.9%
Professional and Business Services	15,400	15,600	15,700	-200	-1.3%	-300	-1.9%
Education and Health Services	30,300	30,200	30,000	100	0.3%	300	1.0%
Leisure and Hospitality	26,100	25,200	24,500	900	3.6%	1,600	6.5%
Other Services	7,900	7,900	7,700	0	0.0%	200	2.6%
Government	33,700	33,900	33,800	-200	-0.6%	-100	-0.3%

Industry Size Class

Size Class	Employees per firm	Number of Firms	December 2013	
			Employment in Size Class	% Total Employment
9	1000+	19	42,546	22.7%
8	500-999	24	16,021	8.5%
7	250-499	58	19,774	10.5%
6	100-249	206	31,375	16.7%
5	50-99	305	21,561	11.5%
4	20-49	815	24,462	13.0%
3	10-19	1,048	14,275	7.6%
2	5-9	1,490	9,829	5.2%
1	1-4	3,710	7,613	4.1%
0	0	480	0	0.0%
Total		8,155	187,456	100.0%

Annual Growth Rate for Total Nonagricultural Employment



Unemployment Information (all estimates in thousands)

	Corpus Christi MSA				Texas (Actual)				United States (Actual)			
	C.L.F.	Emp.	Unemp.	Rate	C.L.F.	Emp.	Unemp.	Rate	C.L.F.	Emp.	Unemp.	Rate
May-14	221.4	210.6	10.8	4.9	12,969.3	12,313.7	655.6	5.1	155,841.0	146,398.0	9,443.0	6.1
Apr-14	221.7	211.6	10.1	4.6	12,930.2	12,317.4	612.8	4.7	154,845.0	145,767.0	9,079.0	5.9
May-13	219.2	206.2	13.0	5.9	12,821.1	12,015.9	805.2	6.3	155,734.0	144,432.0	11,302.0	7.3

Historical Unemployment Rates

