

# Coastal Bend Workforce Area

(Not Seasonally Adjusted Unemployment Rates by WDA, MSA, & County)

Area	Area Type	Latest Monthly Data June 2014						Previous Monthly Data May 2014				Year Ago June 2013			
		Labor Force	Employment	Unemployment	Rate	M+-	Y+-	Labor Force	Employment	Unemployment	Rate	Labor Force	Employment	Unemployment	Rate
United States	Nation	156,997,000	147,104,000	9,893,000	6.3	0.2	-1.5	155,841,000	146,398,000	9,443,000	6.1	157,089,000	144,841,000	12,248,000	7.8
Texas	State	13,032,583	12,321,373	711,210	5.5	0.4	-1.4	12,969,179	12,313,788	655,391	5.1	12,905,852	12,013,699	892,153	6.9
Corpus Christi	MSA	221,997	210,304	11,693	5.3	0.4	-1.3	221,236	210,430	10,806	4.9	221,170	206,664	14,506	6.6
Coastal Bend	WDA	301,935	286,295	15,640	5.2	0.5	-1.2	301,613	287,293	14,320	4.7	300,705	281,362	19,343	6.4
Aransas	County	11,261	10,685	576	5.1	0.3	-1.4	11,229	10,691	538	4.8	11,225	10,500	725	6.5
Bee	County	13,504	12,688	816	6.0	0.7	-1.2	13,631	12,914	717	5.3	13,999	12,995	1,004	7.2
Brooks	County	3,539	3,292	247	7.0	1.5	-1.5	3,554	3,358	196	5.5	3,531	3,232	299	8.5
Duval	County	6,174	5,831	343	5.6	0.5	-1.1	6,236	5,919	317	5.1	6,130	5,717	413	6.7
Jim Wells	County	24,918	23,753	1,165	4.7	0.4	-0.9	24,733	23,677	1,056	4.3	24,878	23,483	1,395	5.6
Kenedy	County	278	269	9	3.2	0.4	-0.1	286	278	8	2.8	270	261	9	3.3
Kleberg	County	18,267	17,335	932	5.1	0.7	-1.3	18,698	17,879	819	4.4	17,931	16,782	1,149	6.4
Live Oak	County	7,487	7,240	247	3.3	0.2	-1.1	7,398	7,168	230	3.1	7,277	6,957	320	4.4
McMullen	County	981	963	18	1.8	0.3	-1.1	993	978	15	1.5	789	766	23	2.9
Nueces	County	180,876	171,787	9,089	5.0	0.3	-1.3	180,298	171,890	8,408	4.7	180,228	168,813	11,415	6.3
Refugio	County	4,790	4,620	170	3.5	0.3	-1.3	4,848	4,692	156	3.2	4,731	4,505	226	4.8
San Patricio	County	29,860	27,832	2,028	6.8	0.5	-1.2	29,709	27,849	1,860	6.3	29,716	27,351	2,365	8.0

(M+-) Change in unemployment rate from last month (Increase) (Decrease)

(Y+-) Change in unemployment rate from last year (Increase) (Decrease)

- Earnings for all occupations Coastal Bend, expressed as hourly rate (TWC):

Coastal Bend	All Occupations-	Average \$17.82/hr.	Entry level \$8.52/hr.	Experienced workers \$22.47/hr.	Top 10% \$32.34/hr.
Texas	All Occupations-	Average \$20.72/hr.	Entry level \$8.91/hr.	Experienced workers \$ 26.62/hr.	Top 10% \$38.68/hr.

- Educational Attainment for population 25 years of age and older - Corpus Christi (Census American Fact Finder/American Community Survey):

Less than 9 <sup>th</sup> grade	8.7%	12 <sup>th</sup> grade & GED	27.7%	Associates degree	7.0%	Graduate or Professional degrees	8.4%
9 <sup>th</sup> thru 11 <sup>th</sup> grade	9.3%	Some College	25.1%	Bachelors degree	13.8%		

- Median earnings Corpus Christi by education for persons 25 years of age & up (Census AFF/ACS): **\$27,211** (\$36,380 male/ \$22,328 female)

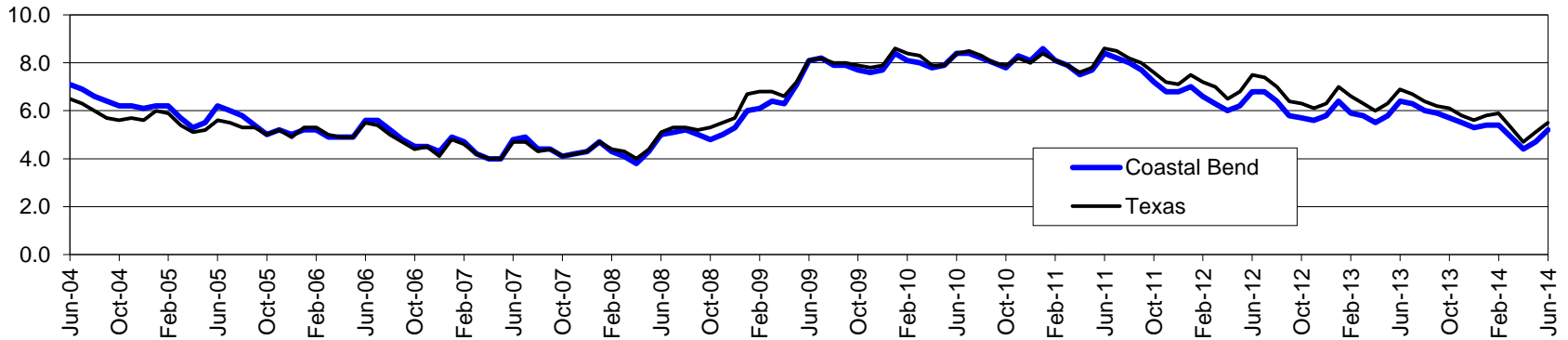
Less than High School	\$15,437	Some College or Associates	\$28,739	Graduate or Professional	\$56,681
High School & GED	\$26,818	Bachelor's	\$44,078		

# Coastal Bend Workforce Development Area\*

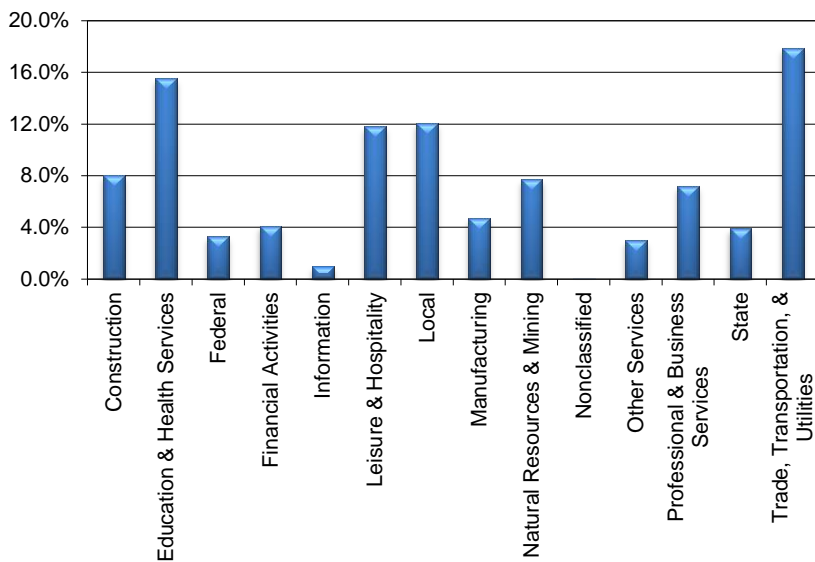
June 2014

Coastal Bend WDA					Texas				
	CLF	Employed	Unemployed	Rate		CLF	Employed	Unemployed	Rate
Jun-14	301,935	286,295	15,640	5.2	Jun-14	13,032,583	12,321,373	711,210	5.5
May-14	301,613	287,293	14,320	4.7	May-14	12,969,179	12,313,788	655,391	5.1
Jun-13	300,705	281,362	19,343	6.4	Jun-13	12,905,852	12,013,699	892,153	6.9

## Historical Unemployment Rates



## Coastal Bend WDA Industry Composition 4th Quarter 2013



## Total WDA Claims

### Continued Claims for the Week of the 12th

	Jun-14	May-14	Jun-13	OTY
Continued	2,775	2,565	2,934	-159

### Texas Unemployment Insurance Claims

#### Continued Claims for the Week of the 12th

	Jun-14	May-14	Jun-13	OTY
Continued	125,545	120,283	134,336	-8,791

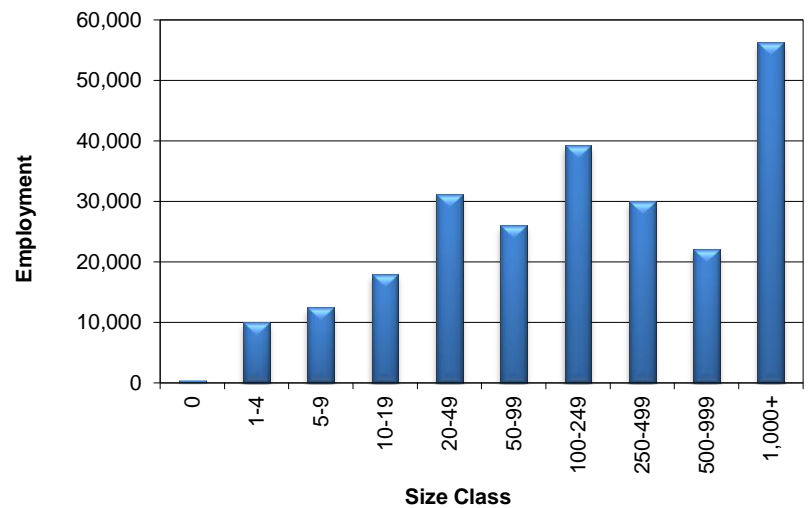
## Coastal Bend WDA Average Weekly Wage

	Coastal Bend	Texas
4th Quarter 2013	\$860.01	\$1,026.61
3rd Quarter 2013	\$807.87	\$951.89
4th Quarter 2012	\$865.44	\$1,027.11
Quarter Change	\$52.14	\$74.72
OTY Change	-\$5.43	-\$0.50

## NAICS Covered Employment Quarterly Data 4th Quarter 2013

SUPER SECTOR	Employment	Change	
		Quarter	Year
Construction	19,584	736	1,573
Education & Health Services	38,063	-245	-586
Federal	8,003	-98	-555
Financial Activities	10,068	-52	428
Information	2,393	32	55
Leisure & Hospitality	28,950	-989	1,414
Local	29,447	1,985	255
Manufacturing	11,525	4	103
Natural Resources & Mining	18,825	60	289
Nonclassified	91	40	45
Other Services	7,267	-87	50
Professional & Business Services	17,610	151	127
State	9,505	440	-254
Trade, Transportation, & Utilities	43,767	561	1,222
<b>TOTAL</b>	<b>245,098</b>	<b>2,538</b>	<b>4,166</b>

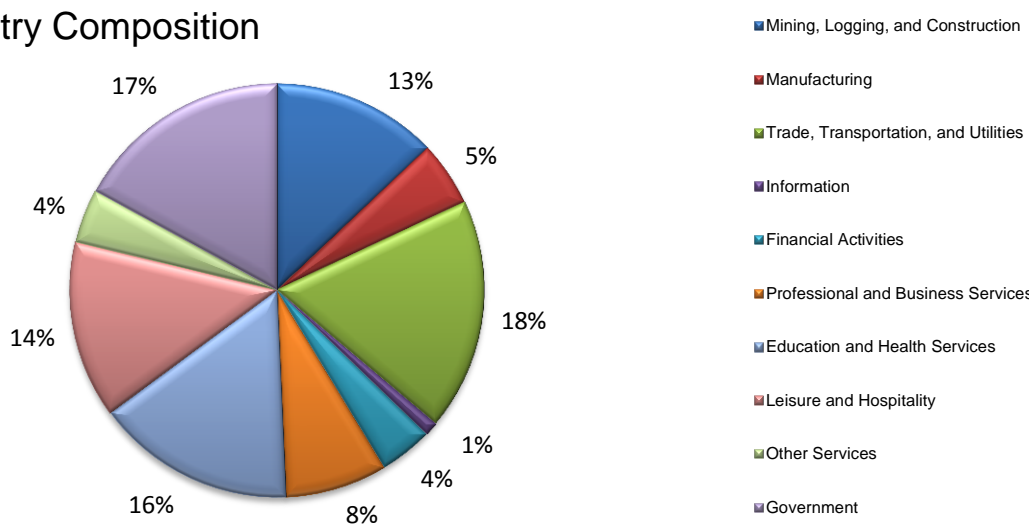
## Size Class Employment Composition 4th Quarter 2013



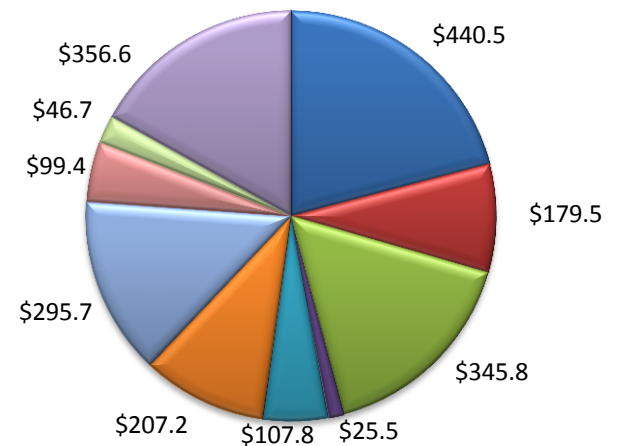
\*Counties in WDA: Aransas, Bee, Brooks, Duval, Jim Wells, Kenedy, Kleberg, Live Oak, McMullen, Nueces, Refugio, & San Patricio

(Aransas, Nueces, San Patricio)

Industry Composition



Wages by Industry (in millions)  
4th Quarter 2013



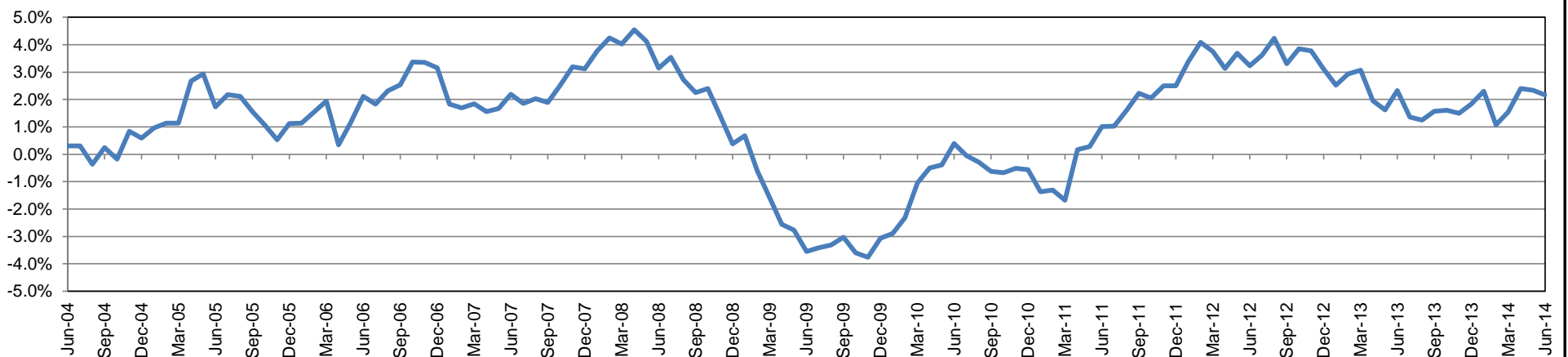
Employment by Industry

	Jun-14	May-14	Jun-13	Monthly Change		Annual Change	
				Actual	%	Actual	%
Total Nonfarm	193,700	193,100	189,600	600	0.3%	4,100	2.2%
Mining, Logging, and Construction	25,100	25,700	24,200	-600	-2.3%	900	3.7%
Manufacturing	9,800	9,700	9,800	100	1.0%	0	0.0%
Trade, Transportation, and Utilities	35,100	34,400	33,900	700	2.0%	1,200	3.5%
Information	2,100	2,100	2,100	0	0.0%	0	0.0%
Financial Activities	8,000	8,000	7,800	0	0.0%	200	2.6%
Professional and Business Services	15,400	15,400	15,700	0	0.0%	-300	-1.9%
Education and Health Services	30,200	30,300	29,900	-100	-0.3%	300	1.0%
Leisure and Hospitality	26,800	25,900	25,200	900	3.5%	1,600	6.4%
Other Services	8,200	7,900	7,900	300	3.8%	300	3.8%
Government	33,000	33,700	33,100	-700	-2.1%	-100	-0.3%

Industry Size Class

Size Class	Employees per firm	Number of Firms	December 2013	
			Employment in Size Class	% Total Employment
9	1000+	19	42,546	22.7%
8	500-999	24	16,021	8.5%
7	250-499	58	19,774	10.5%
6	100-249	206	31,375	16.7%
5	50-99	305	21,561	11.5%
4	20-49	815	24,462	13.0%
3	10-19	1,048	14,275	7.6%
2	5-9	1,490	9,829	5.2%
1	1-4	3,710	7,613	4.1%
0	0	480	0	0.0%
Total		8,155	187,456	100.0%

Annual Growth Rate for Total Nonagricultural Employment



Unemployment Information (all estimates in thousands)

	Corpus Christi MSA				Texas (Actual)				United States (Actual)			
	C.L.F.	Emp.	Unemp.	Rate	C.L.F.	Emp.	Unemp.	Rate	C.L.F.	Emp.	Unemp.	Rate
Jun-14	222.0	210.3	11.7	5.3	13,032.6	12,321.4	711.2	5.5	156,997.0	147,104.0	9,893.0	6.3
May-14	221.2	210.4	10.8	4.9	12,969.2	12,313.8	655.4	5.1	155,841.0	146,398.0	9,443.0	6.1
Jun-13	221.2	206.7	14.5	6.6	12,905.9	12,013.7	892.2	6.9	157,089.0	144,841.0	12,248.0	7.8

Historical Unemployment Rates

