

Coastal Bend Workforce Area

Area	Area Type	Latest Monthly Data July 2011				Previous Monthly Data June 2011				Year Ago July 2010			
		Labor Force	Employment	Unemployment	Rate	Labor Force	Employment	Unemployment	Rate	Labor Force	Employment	Unemployment	Rate
U.S.	Nation	154,812,000	140,384,000	14,428,000	9.3	154,538,000	140,129,000	14,409,000	9.3	155,270,000	140,134,000	15,137,000	9.7
Texas	State	12,318,000	11,241,156	1,076,844	8.7	12,307,467	11,225,164	1,082,303	8.8	12,190,650	11,160,703	1,029,947	8.4
Corpus Christi	MSA	217,185	198,869	18,316	8.4	217,471	198,873	18,598	8.6	212,304	194,675	17,629	8.3
Coastal Bend	WDA	287,690	263,425	24,265	8.4	287,923	263,286	24,637	8.6	282,514	258,840	23,674	8.4
Aransas	County	12,052	11,091	961	8.0	12,091	11,091	1,000	8.3	11,801	10,857	944	8.0
Bee	County	12,508	11,282	1,226	9.8	12,650	11,385	1,265	10.0	12,467	11,286	1,181	9.5
Brooks	County	3,190	2,820	370	11.6	3,218	2,859	359	11.2	3,236	2,876	360	11.1
Duval	County	5,422	4,880	542	10.0	5,451	4,903	548	10.1	5,365	4,762	603	11.2
Jim Wells	County	21,694	19,936	1,758	8.1	21,625	19,841	1,784	8.2	21,561	19,640	1,921	8.9
Kenedy	County	238	223	15	6.3	229	220	9	3.9	234	224	10	4.3
Kleberg	County	17,357	16,016	1,341	7.7	17,195	15,828	1,367	7.9	17,357	16,096	1,261	7.3
Live Oak	County	5,472	5,084	388	7.1	5,387	4,998	389	7.2	5,396	5,021	375	6.9
McMullen	County	415	387	28	6.7	425	397	28	6.6	373	343	30	8.0
Nueces	County	173,229	158,952	14,277	8.2	173,463	158,955	14,508	8.4	168,965	155,600	13,365	7.9
Refugio	County	4,210	3,928	282	6.7	4,272	3,982	290	6.8	4,220	3,917	303	7.2
San Patricio	County	31,903	28,826	3,077	9.6	31,917	28,827	3,090	9.7	31,539	28,218	3,321	10.5

- Earnings for all occupations Coastal Bend, expressed as hourly rate (TWC):

Coastal Bend	All Occupations-	Average \$17.28/hr.	Entry level \$8.30/hr.	Experienced workers \$21.77/hr.	Top 10% \$31.60/hr.
Texas	All Occupations-	Average \$20.30/hr.	Entry level \$9.62/hr.	Experienced workers \$ 25.68/hr.	Top 10% \$37.83/hr.

- Educational Attainment for population 25 years of age and older - Corpus Christi (Census American Fact Finder/American Community Survey):

Less than 9 th grade	9.3%	12 th grade & GED	26.7%	Associates degree	7.4%	Graduate or Professional degrees	7.0%
9 th thru 11 th grade	11.8%	Some College	24.7%	Bachelors degree	13.0%		

- Median earnings Corpus Christi by education for persons 25 years of age & up (Census AFF/ACS): **\$27,211** (\$36,380 male/ \$22,328 female)

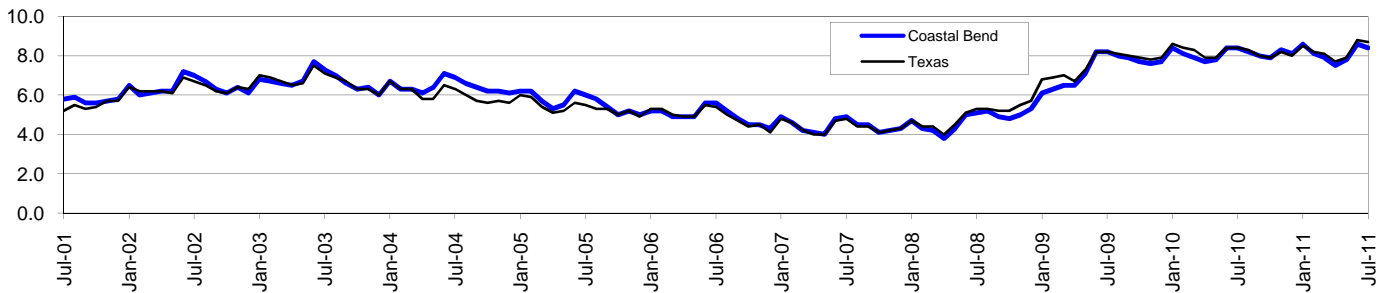
Less than High School	\$15,545	Some College or Associates	\$31,460	Graduate or Professional	\$54,717
High School & GED	\$23,028	Bachelor's	\$43,005		

Coastal Bend Workforce Development Area*

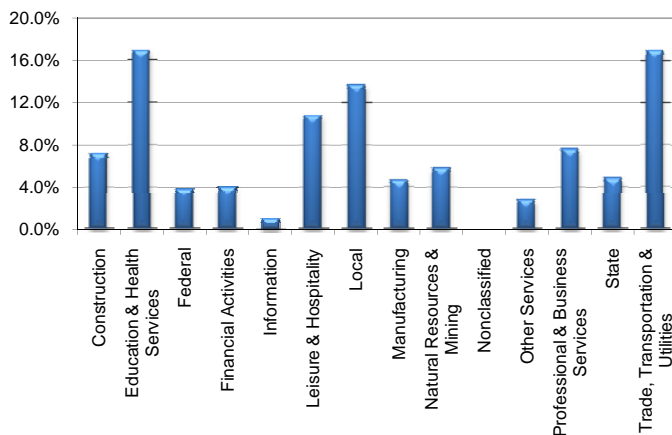
July 2011

Coastal Bend WDA					Texas				
	CLF	Employed	Unemployed	Rate		CLF	Employed	Unemployed	Rate
Jul-11	287,690	263,425	24,265	8.4	Jul-11	12,318,000	11,241,156	1,076,844	8.7
Jun-11	287,923	263,286	24,637	8.6	Jun-11	12,307,467	11,225,164	1,082,303	8.8
Jul-10	282,514	258,840	23,674	8.4	Jul-10	12,190,650	11,160,703	1,029,947	8.4

Historical Unemployment Rates



Coastal Bend WDA Industry Composition 1st Quarter 2011



Total WDA Claims

	Jul-11	Jun-11	Jul-10	OTY
Initial	1,771	2,028	2,227	-456
Continued	7,448	7,917	10,414	-2,966
Continued Claims for the Week of the 12th				
Continued	8,028	8,128	9,511	-1,483

Texas Unemployment Insurance Claims Filed

	Jul-11	Jun-11	Jul-10	OTY
Initial	90,111	98,891	95,154	-5,043
Continued	865,252	796,470	991,661	-126,409
Continued Claims for the Week of the 12th				
Continued	191,994	187,689	233,302	-41,308

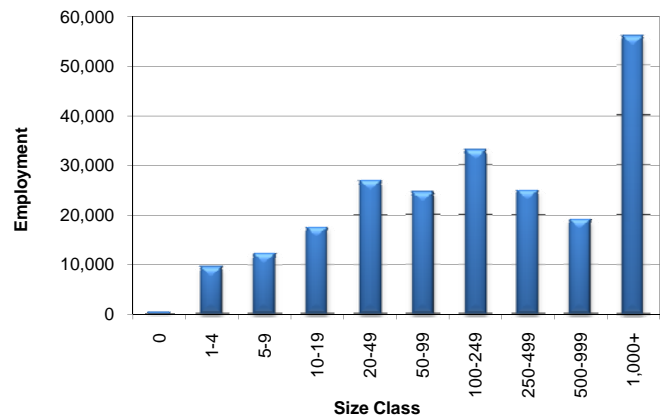
Coastal Bend WDA Average Weekly Wage

	Coastal Bend	WDA Qtr. Chg.	Texas
1st Quarter 2011	\$735.04	-\$70.21	\$945.99
4th Quarter 2010	\$805.25	WDA OTY Chg.	\$976.16
1st Quarter 2010	\$685.13	\$49.91	\$891.80

NAICS Covered Employment Quarterly Data 1st Quarter 2011

SUPER SECTOR	Employment	Change	
		Quarter	Year
Construction	16,116	-326	-1,051
Education & Health Services	37,822	-20	681
Federal	8,519	-74	31
Financial Activities	8,978	61	-52
Information	2,273	-59	-187
Leisure & Hospitality	24,338	30	6
Local	30,558	-256	-130
Manufacturing	10,402	-78	88
Natural Resources & Mining	13,058	788	2,731
Nonclassified	35	19	15
Other Services	6,235	-12	72
Professional & Business Services	16,984	-263	46
State	10,742	126	411
Trade, Transportation & Utilities	38,117	-1,428	-50
TOTAL	224,177	-1,492	2,611

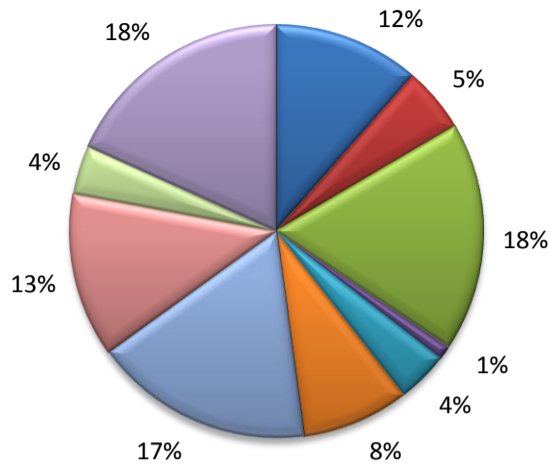
Size Class Employment Composition 1st Quarter 2011



*Counties in WDA: Aransas, Bee, Brooks, Duval, Jim Wells, Kenedy, Kleberg, Live Oak, McMullen, Nueces, Refugio, & San Patricio

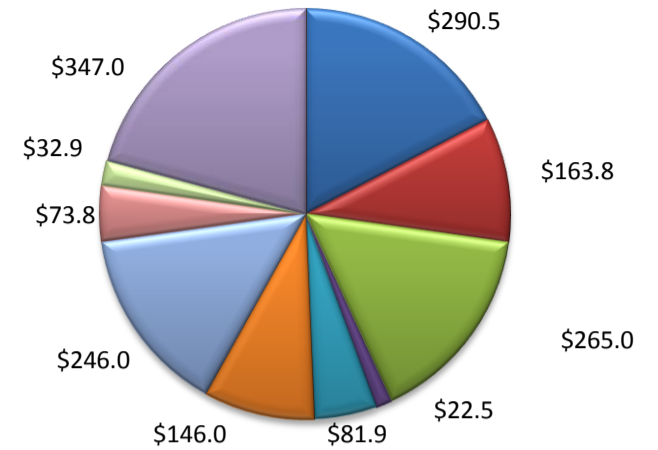
(Aransas, Nueces, San Patricio)

Industry Composition



- Mining, Logging, and Construction
- Manufacturing
- Trade, Transportation, and Utilities
- Information
- Financial Activities
- Professional and Business Services
- Education and Health Services
- Leisure and Hospitality
- Other Services
- Government

Wages by Industry (in millions)
1st Quarter 2011



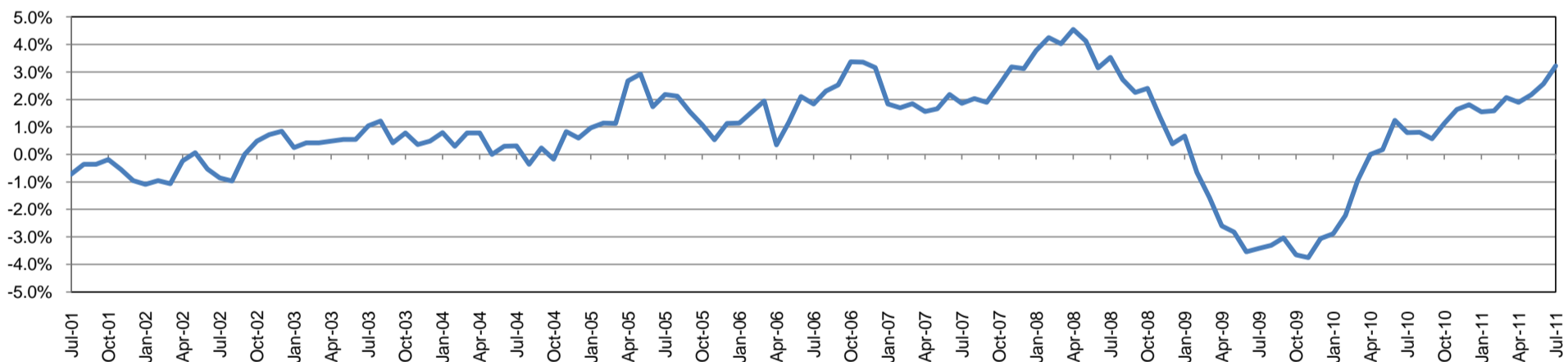
Employment by Industry

	Jul-11	Jun-11	Jul-10	Monthly Change		Annual Change	
				Actual	%	Actual	%
Total Nonfarm	182,400	183,800	176,700	-1,400	-0.8%	5,700	3.2%
Mining, Logging, and Construction	20,800	20,700	19,000	100	0.5%	1,800	9.5%
Manufacturing	9,400	9,400	9,300	0	0.0%	100	1.1%
Trade, Transportation, and Utilities	32,500	32,500	31,300	0	0.0%	1,200	3.8%
Information	2,000	2,000	2,200	0	0.0%	-200	-9.1%
Financial Activities	7,300	7,300	7,300	0	0.0%	0	0.0%
Professional and Business Services	15,300	15,300	14,900	0	0.0%	400	2.7%
Education and Health Services	31,400	31,400	30,800	0	0.0%	600	2.0%
Leisure and Hospitality	23,400	23,000	21,500	400	1.7%	1,900	8.8%
Other Services	7,000	7,000	7,000	0	0.0%	0	0.0%
Government	33,300	35,200	33,400	-1,900	-5.4%	-100	-0.3%

Industry Size Class

Size Class	Employees per firm	Number of Firms	March 2011		
			Employment in Size Class	% Total Employment	
9	1000+	20	45,282	25.9%	
8	500-999	23	15,232	8.7%	
7	250-499	46	14,867	8.5%	
6	100-249	177	26,242	15.0%	
5	50-99	291	20,159	11.5%	
4	20-49	708	21,680	12.4%	
3	10-19	1,039	14,198	8.1%	
2	5-9	1,502	9,969	5.7%	
1	1-4	3,568	7,402	4.2%	
0	0	618	0	0.0%	
Total			7,992	175,031	100.0%

Annual Growth Rate for Total Nonagricultural Employment



Unemployment Information (all estimates in thousands)

	Corpus Christi MSA				Texas (Actual)				United States (Actual)			
	C.L.F.	Emp.	Unemp.	Rate	C.L.F.	Emp.	Unemp.	Rate	C.L.F.	Emp.	Unemp.	Rate
Jul-11	217.2	198.9	18.3	8.4	12,318.0	11,241.2	1,076.8	8.7	154,812.0	140,384.0	14,428.0	9.3
Jun-11	217.5	198.9	18.6	8.6	12,307.5	11,225.2	1,082.3	8.8	154,538.0	140,129.0	14,409.0	9.3
Jul-10	212.3	194.7	17.6	8.3	12,190.6	11,160.7	1,029.9	8.4	155,270.0	140,134.0	15,137.0	9.7

Historical Unemployment Rates

