

Coastal Bend Workforce Area

Area	Area Type	Latest Monthly Data January 2012						Previous Monthly Data December 2011				Year Ago January 2011			
		Labor Force	Employment	Unemployment	Rate	M+-	Y+-	Labor Force	Employment	Unemployment	Rate	Labor Force	Employment	Unemployment	Rate
United States	Nation	153,485,000	139,944,000	13,541,000	8.8	0.5	-1	153,373,000	140,681,000	12,692,000	8.3	152,536,000	137,599,000	14,937,000	9.8
Texas	State	12,462,387	11,515,624	946,763	7.6	0.5	-0.8	12,493,959	11,606,912	887,047	7.1	12,335,907	11,295,677	1,040,230	8.4
Corpus Christi	MSA	218,638	202,587	16,051	7.3	0.4	-1.5	219,641	204,495	15,146	6.9	213,162	194,430	18,732	8.8
Coastal Bend	WDA	292,985	272,041	20,944	7.1	0.4	-1.4	294,111	274,355	19,756	6.7	285,959	261,537	24,422	8.5
Aransas	County	11,035	10,217	818	7.4	-0.2	-1.4	11,158	10,314	844	7.6	10,754	9,806	948	8.8
Bee	County	12,567	11,559	1,008	8.0	0.5	-1.2	12,496	11,557	939	7.5	12,467	11,319	1,148	9.2
Brooks	County	3,340	3,069	271	8.1	0.3	-0.9	3,362	3,101	261	7.8	3,368	3,064	304	9.0
Duval	County	5,551	5,108	443	8.0	0.3	-2.4	5,669	5,230	439	7.7	5,564	4,983	581	10.4
Jim Wells	County	23,628	22,218	1,410	6.0	0.3	-1.3	23,765	22,413	1,352	5.7	22,897	21,226	1,671	7.3
Kenedy	County	255	247	8	3.1	-2.2	-1.6	262	248	14	5.3	254	242	12	4.7
Kleberg	County	17,660	16,477	1,183	6.7	0.6	-0.8	17,633	16,563	1,070	6.1	17,451	16,141	1,310	7.5
Live Oak	County	6,370	6,057	313	4.9	0.2	-1.1	6,331	6,035	296	4.7	5,923	5,570	353	6.0
McMullen	County	567	548	19	3.4	0.1	-0.6	570	551	19	3.3	529	508	21	4.0
Nueces	County	177,980	165,328	12,652	7.1	0.5	-1.3	178,708	166,885	11,823	6.6	173,171	158,671	14,500	8.4
Refugio	County	4,409	4,171	238	5.4	0.4	-1.3	4,382	4,162	220	5.0	4,343	4,054	289	6.7
San Patricio	County	29,623	27,042	2,581	8.7	0.4	-2.5	29,775	27,296	2,479	8.3	29,238	25,953	3,285	11.2

(M+-) Change in unemployment rate from last month (Increase) (Decrease)

(Y+-) Change in unemployment rate from last year (Increase) (Decrease)

- Earnings for all occupations Coastal Bend, expressed as hourly rate (TWC):

Coastal Bend	All Occupations-	Average \$17.28/hr.	Entry level \$8.30/hr.	Experienced workers \$21.77/hr.	Top 10% \$31.60/hr.
Texas	All Occupations-	Average \$20.30/hr.	Entry level \$9.62/hr.	Experienced workers \$ 25.68/hr.	Top 10% \$37.83/hr.

- Educational Attainment for population 25 years of age and older - Corpus Christi (Census American Fact Finder/American Community Survey):

Less than 9 th grade	9.3%	12 th grade & GED	26.7%	Associates degree	7.4%	Graduate or Professional degrees	7.0%
9 th thru 11 th grade	11.8%	Some College	24.7%	Bachelors degree	13.0%		

- Median earnings Corpus Christi by education for persons 25 years of age & up (Census AFF/ACS): \$27,211 (\$36,380 male/ \$22,328 female)

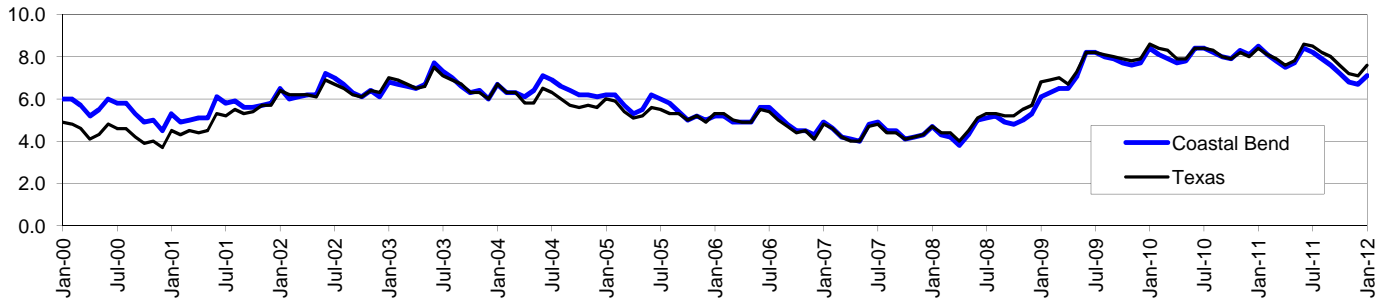
Less than High School	\$15,545	Some College or Associates	\$31,460	Graduate or Professional	\$54,717
High School & GED	\$23,028	Bachelor's	\$43,005		

Coastal Bend Workforce Development Area*

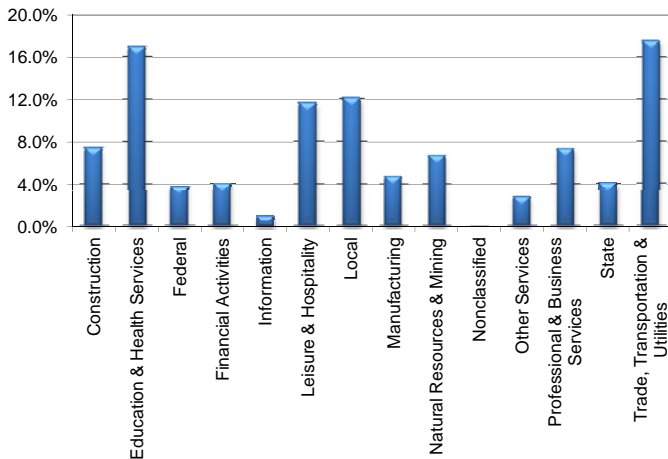
January 2012

Coastal Bend WDA					Texas				
	CLF	Employed	Unemployed	Rate		CLF	Employed	Unemployed	Rate
Jan-12	292,985	272,041	20,944	7.1	Jan-12	12,462,387	11,515,624	946,763	7.6
Dec-11	294,111	274,355	19,756	6.7	Dec-11	12,493,959	11,606,912	887,047	7.1
Jan-11	285,959	261,537	24,422	8.5	Jan-11	12,335,907	11,295,677	1,040,230	8.4

Historical Unemployment Rates



Coastal Bend WDA Industry Composition 3rd Quarter 2011



Total WDA Claims

Continued Claims for the Week of the 12th

	Jan-12	Dec-11	Jan-11	OTY
Continued	2,919	2,978	4,019	-1,100

Texas Unemployment Insurance Claims Filed

Continued Claims for the Week of the 12th

	Jan-12	Dec-11	Jan-11	OTY
Continued	188,266	188,851	208,853	-20,587

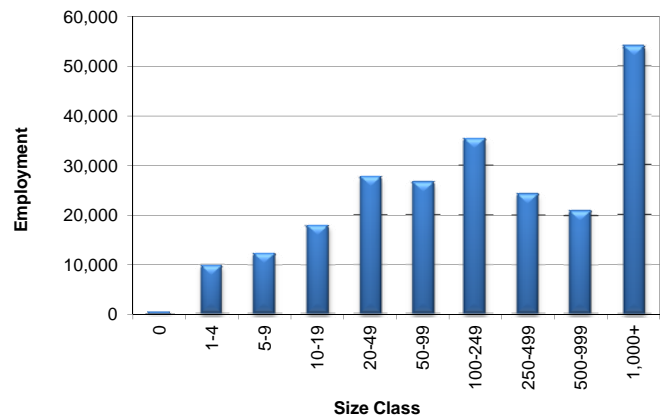
Coastal Bend WDA Average Weekly Wage

	Coastal Bend	Texas
3rd Quarter 2011	\$787.52	\$931.50
2nd Quarter 2011	\$752.98	\$899.57
3rd Quarter 2010	\$727.02	\$876.29
Quarter Change	\$34.54	\$31.93
OTY Change	\$60.50	\$55.21

NAICS Covered Employment Quarterly Data 3rd Quarter 2011

SUPER SECTOR	Employment	Change	
		Quarter	Year
Construction	16,838	269	575
Education & Health Services	38,813	348	815
Federal	8,646	78	-134
Financial Activities	9,326	122	387
Information	2,275	-27	-111
Leisure & Hospitality	26,556	236	904
Local	27,665	-2,562	-935
Manufacturing	10,926	317	582
Natural Resources & Mining	15,438	1,498	3,484
Nonclassified	39	26	11
Other Services	6,405	-61	142
Professional & Business Services	16,793	-344	-82
State	9,365	-854	-561
Trade, Transportation & Utilities	40,191	956	933
TOTAL	229,276	2	6,010

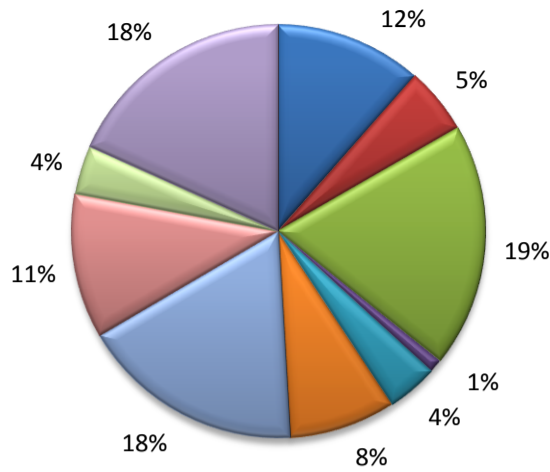
Size Class Employment Composition 3rd Quarter 2011



*Counties in WDA: Aransas, Bee, Brooks, Duval, Jim Wells, Kenedy, Kleberg, Live Oak, McMullen, Nueces, Refugio, & San Patricio

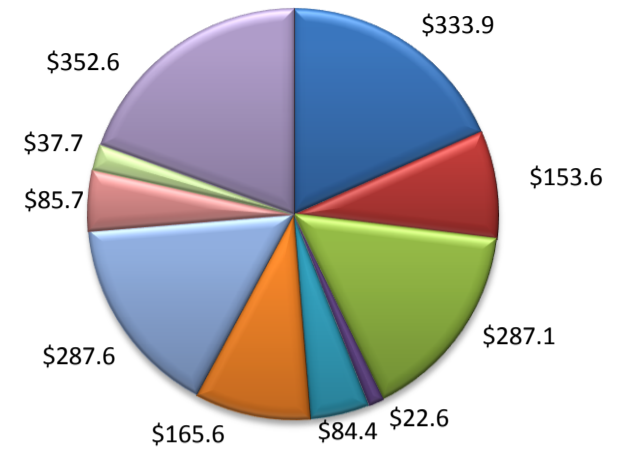
(Aransas, Nueces, San Patricio)

Industry Composition



- Mining, Logging, and Construction
- Manufacturing
- Trade, Transportation, and Utilities
- Information
- Financial Activities
- Professional and Business Services
- Education and Health Services
- Leisure and Hospitality
- Other Services
- Government

Wages by Industry (in millions)
3rd Quarter 2011



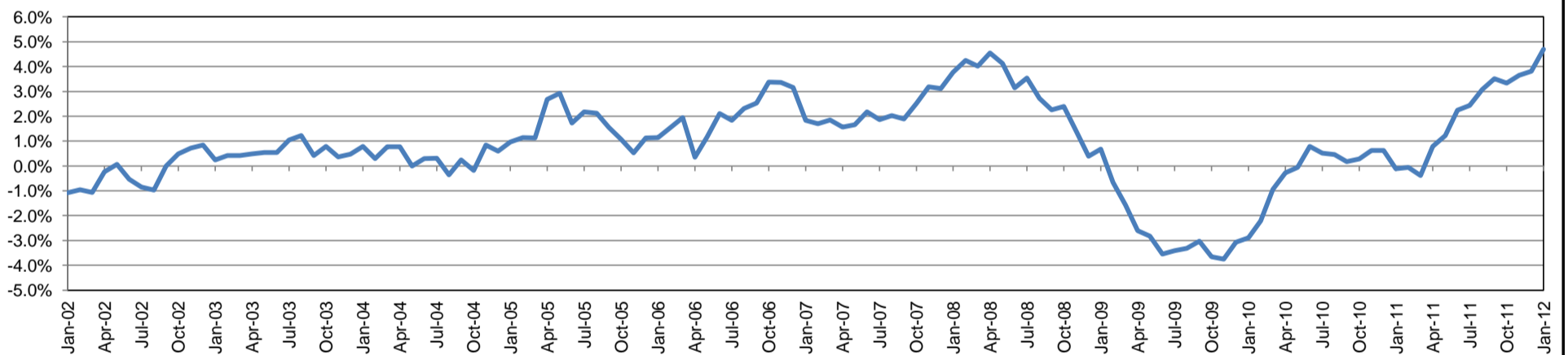
Employment by Industry

	Jan-12	Dec-11	Jan-11	Monthly Change		Annual Change	
				Actual	%	Actual	%
Total Nonfarm	182,800	184,900	174,600	-2,100	-1.1%	8,200	4.7%
Mining, Logging, and Construction	21,000	21,000	19,100	0	0.0%	1,900	10.0%
Manufacturing	9,500	9,600	9,200	-100	-1.0%	300	3.3%
Trade, Transportation, and Utilities	34,800	35,400	30,800	-600	-1.7%	4,000	13.0%
Information	1,900	1,900	2,100	0	0.0%	-200	-9.5%
Financial Activities	7,300	7,400	7,100	-100	-1.4%	200	2.8%
Professional and Business Services	15,200	15,200	14,900	0	0.0%	300	2.0%
Education and Health Services	32,000	32,100	30,800	-100	-0.3%	1,200	3.9%
Leisure and Hospitality	20,700	21,100	19,200	-400	-1.9%	1,500	7.8%
Other Services	7,000	7,000	6,700	0	0.0%	300	4.5%
Government	33,400	34,200	34,700	-800	-2.3%	-1,300	-3.8%

Industry Size Class September 2011

Size Class	Employees per firm	Number of Firms	Employment in Size Class	% Total Employment
9	1000+	17	41,334	23.3%
8	500-999	26	17,712	10.0%
7	250-499	45	14,761	8.3%
6	100-249	185	28,084	15.9%
5	50-99	305	21,351	12.1%
4	20-49	734	22,437	12.7%
3	10-19	1,051	14,209	8.0%
2	5-9	1,478	9,770	5.5%
1	1-4	3,605	7,444	4.2%
0	0	584	0	0.0%
Total		8,030	177,102	100.0%

Annual Growth Rate for Total Nonagricultural Employment



Unemployment Information (all estimates in thousands)

	Corpus Christi MSA				Texas (Actual)				United States (Actual)			
	C.L.F.	Emp.	Unemp.	Rate	C.L.F.	Emp.	Unemp.	Rate	C.L.F.	Emp.	Unemp.	Rate
Jan-12	218.7	202.6	16.1	7.3	12,462.4	11,515.6	946.8	7.6	153,485.0	139,944.0	13,541.0	8.8
Dec-11	219.6	204.5	15.1	6.9	12,493.9	11,606.9	887.0	7.1	153,373.0	140,681.0	12,692.0	8.3
Jan-11	213.1	194.4	18.7	8.8	12,335.9	11,295.7	1,040.2	8.4	152,536.0	137,599.0	14,937.0	9.8

Historical Unemployment Rates

