

Coastal Bend Workforce Area

(Not Seasonally Adjusted Unemployment Rates by WDA, MSA, & County)

Area	Area Type	Latest Monthly Data February 2014						Previous Monthly Data January 2014				Year Ago February 2013			
		Labor Force	Employment	Unemployment	Rate	M+-	Y+-	Labor Force	Employment	Unemployment	Rate	Labor Force	Employment	Unemployment	Rate
United States	Nation	155,027,000	144,134,000	10,893,000	7.0	0.0	-1.1	154,381,000	143,526,000	10,855,000	7.0	154,727,000	142,228,000	12,500,000	8.1
Texas	State	12,907,042	12,150,582	756,460	5.9	0.1	-0.7	12,818,484	12,074,874	743,610	5.8	12,712,979	11,875,091	837,888	6.6
Corpus Christi	MSA	219,386	207,082	12,304	5.6	0.0	-0.5	217,531	205,314	12,217	5.6	217,480	204,223	13,257	6.1
Coastal Bend	WDA	300,279	283,970	16,309	5.4	0.0	-0.5	296,509	280,470	16,039	5.4	295,476	277,913	17,563	5.9
Aransas	County	11,150	10,521	629	5.6	-0.1	-0.7	11,065	10,431	634	5.7	11,069	10,376	693	6.3
Bee	County	14,234	13,405	829	5.8	0.1	-1.0	13,943	13,148	795	5.7	13,240	12,335	905	6.8
Brooks	County	3,602	3,367	235	6.5	0.4	-0.3	3,501	3,289	212	6.1	3,431	3,196	235	6.8
Duval	County	6,188	5,822	366	5.9	0.5	-0.5	6,048	5,720	328	5.4	5,919	5,540	379	6.4
Jim Wells	County	24,985	23,772	1,213	4.9	0.2	-0.1	24,603	23,439	1,164	4.7	24,715	23,467	1,248	5.0
Kenedy	County	286	274	12	4.2	0.9	1.3	272	263	9	3.3	274	266	8	2.9
Kleberg	County	18,504	17,598	906	4.9	0.1	-0.7	17,778	16,918	860	4.8	18,097	17,089	1,008	5.6
Live Oak	County	7,354	7,096	258	3.5	-0.1	-0.7	7,190	6,930	260	3.6	7,006	6,714	292	4.2
McMullen	County	907	886	21	2.3	-0.4	-0.8	877	853	24	2.7	703	681	22	3.1
Nueces	County	178,748	169,155	9,593	5.4	0.0	-0.4	177,196	167,711	9,485	5.4	177,167	166,820	10,347	5.8
Refugio	County	4,833	4,668	165	3.4	-0.2	-1.1	4,766	4,596	170	3.6	4,609	4,401	208	4.5
San Patricio	County	29,488	27,406	2,082	7.1	-0.1	-0.5	29,270	27,172	2,098	7.2	29,246	27,028	2,218	7.6

(M+-) Change in unemployment rate from last month (Increase) (Decrease)

(Y+-) Change in unemployment rate from last year (Increase) (Decrease)

- Earnings for all occupations Coastal Bend, expressed as hourly rate (TWC):

Coastal Bend	All Occupations-	Average \$18.35/hr.	Entry level \$8.58/hr.	Experienced workers \$23.24/hr.	Top 10% \$33.56/hr.
Texas	All Occupations-	Average \$20.97/hr.	Entry level \$8.88/hr.	Experienced workers \$ 27.02/hr.	Top 10% \$39.64/hr.

- Educational Attainment for population 25 years of age and older - Corpus Christi (Census American Fact Finder/American Community Survey):

Less than 9 th grade	9.6%	12 th grade & GED	26.9%	Associates degree	6.9%	Graduate or Professional degrees	7.0%
9 th thru 11 th grade	11.2%	Some College	25.8%	Bachelors degree	12.6%		

- Median earnings Corpus Christi by education for persons 25 years of age & up (Census AFF/ACS): \$27,211 (\$36,380 male/ \$22,328 female)

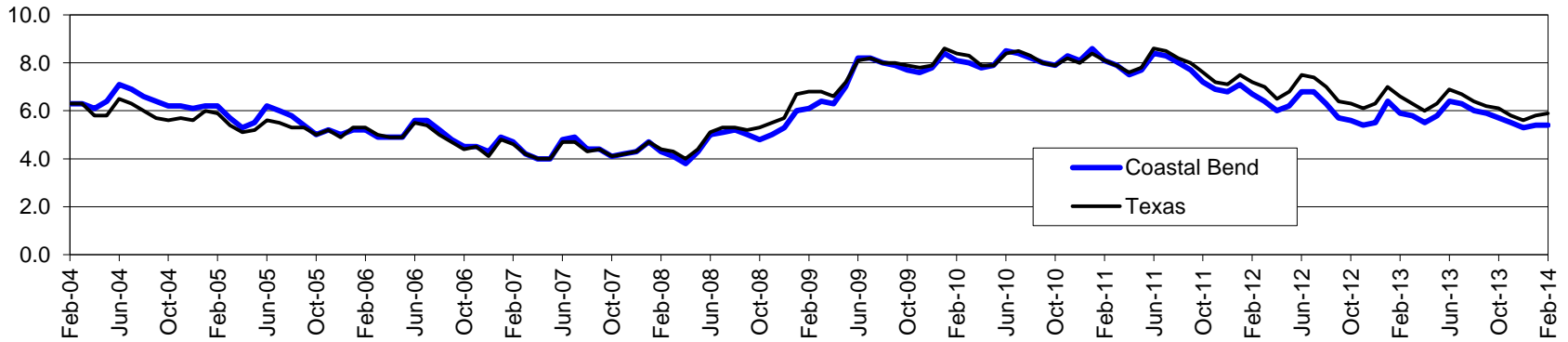
Less than High School	\$17,318	Some College or Associates	\$31,393	Graduate or Professional	\$55,582
High School & GED	\$25,804	Bachelor's	\$45,812		

Coastal Bend Workforce Development Area*

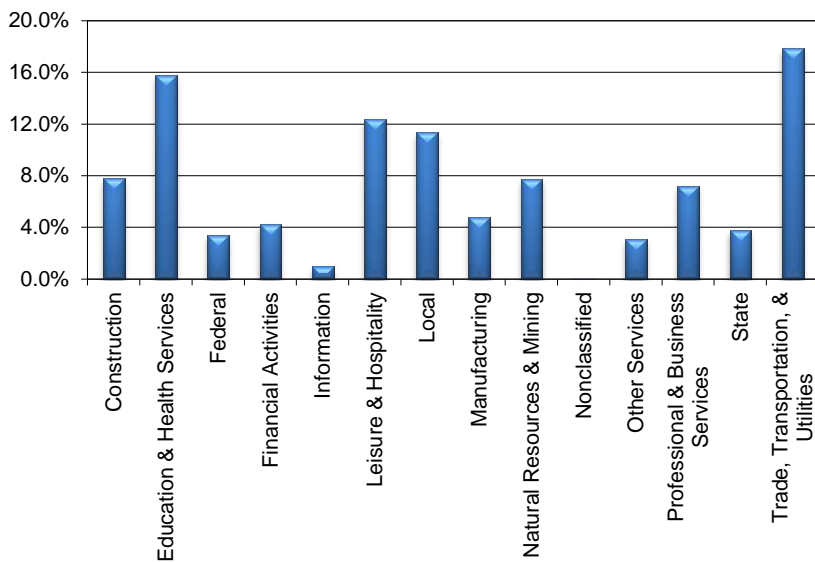
February 2014

Coastal Bend WDA					Texas				
	CLF	Employed	Unemployed	Rate		CLF	Employed	Unemployed	Rate
Feb-14	300,279	283,970	16,309	5.4	Feb-14	12,907,042	12,150,582	756,460	5.9
Jan-14	296,509	280,470	16,039	5.4	Jan-14	12,818,484	12,074,874	743,610	5.8
Feb-13	295,476	277,913	17,563	5.9	Feb-13	12,712,979	11,875,091	837,888	6.6

Historical Unemployment Rates



Coastal Bend WDA Industry Composition 3rd Quarter 2013



Total WDA Claims

Continued Claims for the Week of the 12th

	Feb-14	Jan-14	Feb-13	OTY
Continued	2,642	2,794	2,485	157

Texas Unemployment Insurance Claims

Continued Claims for the Week of the 12th

	Feb-14	Jan-14	Feb-13	OTY
Continued	129,125	134,195	129,108	17

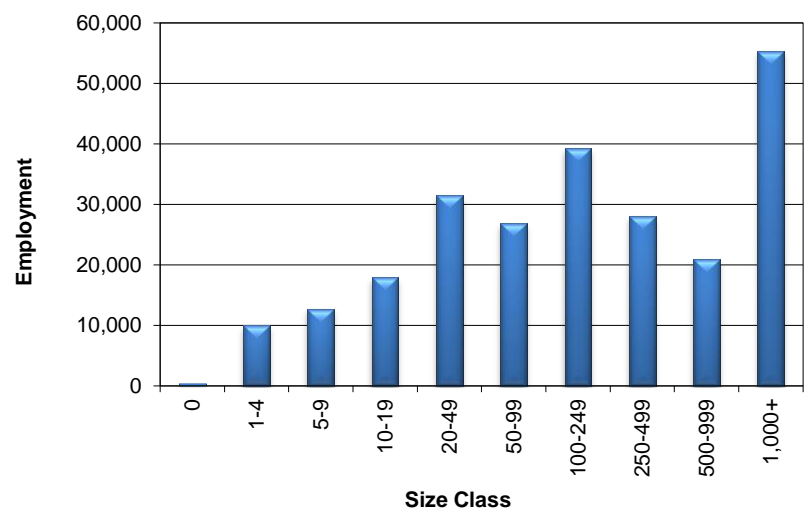
Coastal Bend WDA Average Weekly Wage

	Coastal Bend	Texas
3rd Quarter 2013	\$807.87	\$952.05
2nd Quarter 2013	\$801.78	\$943.59
3rd Quarter 2012	\$795.31	\$929.04
Quarter Change	\$6.09	\$8.46
OTY Change	\$12.56	\$23.01

NAICS Covered Employment Quarterly Data 3rd Quarter 2013

SUPER SECTOR	Employment	Change	
		Quarter	Year
Construction	18,846	652	1,144
Education & Health Services	38,289	-137	-176
Federal	8,101	-23	-520
Financial Activities	10,172	180	558
Information	2,361	-23	45
Leisure & Hospitality	29,939	118	1,305
Local	27,469	-1,677	310
Manufacturing	11,508	58	52
Natural Resources & Mining	18,758	19	639
Nonclassified	83	37	30
Other Services	7,368	86	-70
Professional & Business Services	17,443	-250	87
State	9,065	-295	286
Trade, Transportation, & Utilities	43,183	462	1,202
TOTAL	242,585	-793	4,892

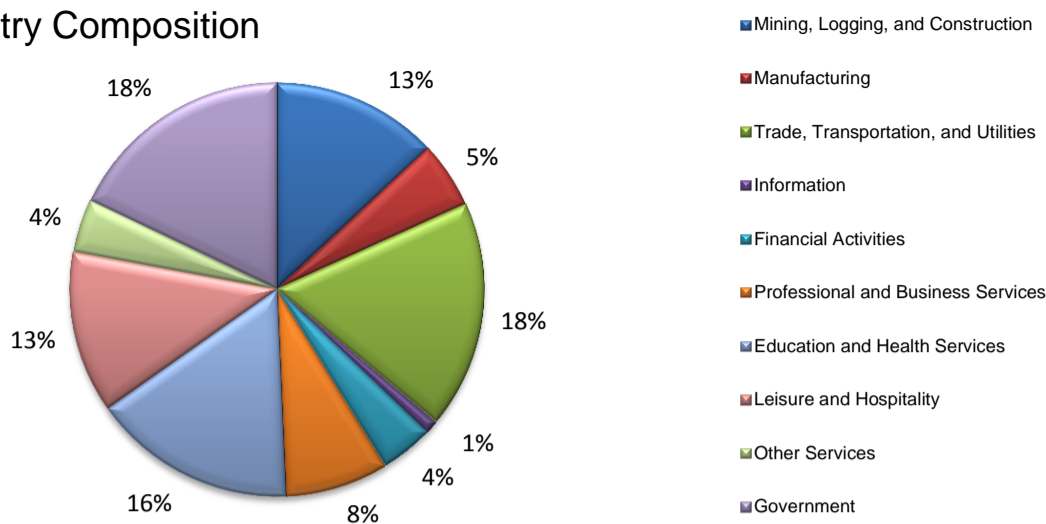
Size Class Employment Composition 3rd Quarter 2013



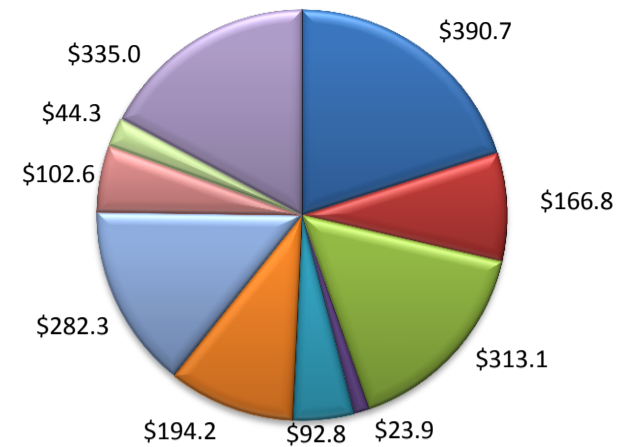
*Counties in WDA: Aransas, Bee, Brooks, Duval, Jim Wells, Kenedy, Kleberg, Live Oak, McMullen, Nueces, Refugio, & San Patricio

(Aransas, Nueces, San Patricio)

Industry Composition



Wages by Industry (in millions)
3rd Quarter 2013



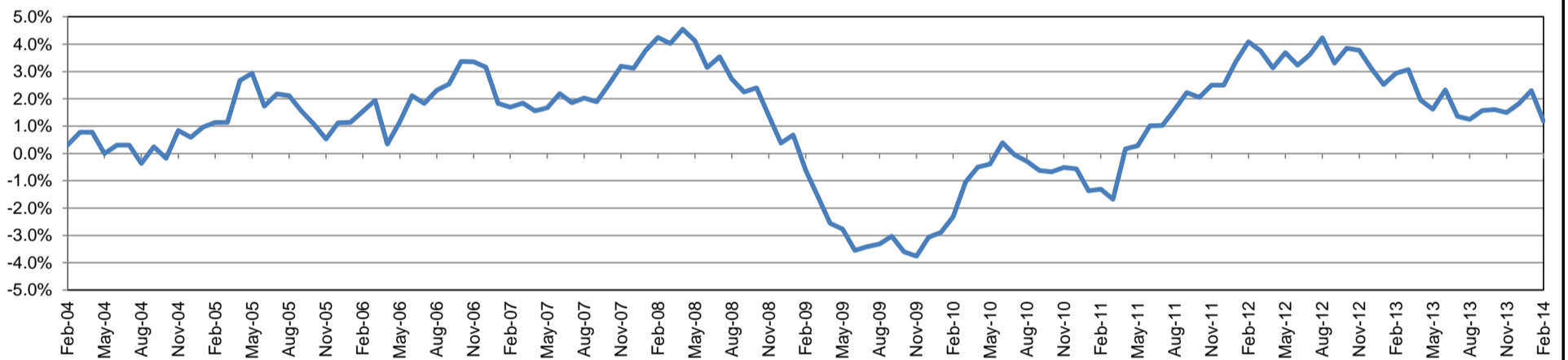
Employment by Industry

	Feb-14	Jan-14	Feb-13	Monthly Change		Annual Change	
				Actual	%	Actual	%
Total Nonfarm	188,600	186,900	186,400	1,700	0.9%	2,200	1.2%
Mining, Logging, and Construction	24,600	24,200	23,500	400	1.7%	1,100	4.7%
Manufacturing	9,800	9,700	9,800	100	1.0%	0	0.0%
Trade, Transportation, and Utilities	33,600	34,000	32,700	-400	-1.2%	900	2.8%
Information	2,000	2,000	2,000	0	0.0%	0	0.0%
Financial Activities	7,800	7,800	7,600	0	0.0%	200	2.6%
Professional and Business Services	15,200	15,200	15,900	0	0.0%	-700	-4.4%
Education and Health Services	30,000	29,600	30,000	400	1.4%	0	0.0%
Leisure and Hospitality	23,900	23,400	23,400	500	2.1%	500	2.1%
Other Services	7,900	7,800	7,600	100	1.3%	300	4.0%
Government	33,800	33,200	33,900	600	1.8%	-100	-0.3%

Industry Size Class September 2013

Size Class	Employees per firm	Number of Firms	Employment in Size Class	% Total Employment
9	1000+	17	39,434	21.3%
8	500-999	28	18,723	10.1%
7	250-499	51	17,222	9.3%
6	100-249	206	31,566	17.1%
5	50-99	313	22,117	11.9%
4	20-49	808	24,208	13.1%
3	10-19	1,048	14,281	7.7%
2	5-9	1,514	10,081	5.4%
1	1-4	3,597	7,457	4.0%
0	0	555	0	0.0%
Total		8,137	185,089	100.0%

Annual Growth Rate for Total Nonagricultural Employment



Unemployment Information (all estimates in thousands)

	Corpus Christi MSA				Texas (Actual)				United States (Actual)			
	C.L.F.	Emp.	Unemp.	Rate	C.L.F.	Emp.	Unemp.	Rate	C.L.F.	Emp.	Unemp.	Rate
Feb-14	219.4	207.1	12.3	5.6	12,907.1	12,150.6	756.5	5.9	155,027.0	144,134.0	10,893.0	7.0
Jan-14	217.5	205.3	12.2	5.6	12,818.5	12,074.9	743.6	5.8	154,381.0	143,526.0	10,855.0	7.0
Feb-13	217.5	204.2	13.3	6.1	12,713.0	11,875.1	837.9	6.6	154,727.0	142,228.0	12,500.0	8.1

Historical Unemployment Rates

