

Coastal Bend Workforce Area

Area	Area Type	Latest Monthly Data August 2012						Previous Monthly Data July 2012				Year Ago August 2011			
		Labor Force	Employment	Unemployment	Rate	M+-	Y+-	Labor Force	Employment	Unemployment	Rate	Labor Force	Employment	Unemployment	Rate
United States	Nation	155,254,000	142,558,000	12,696,000	8.2	-0.4	-0.9	156,526,000	143,126,000	13,400,000	8.6	154,343,000	140,335,000	14,008,000	9.1
Texas	State	12,625,940	11,738,210	887,730	7.0	-0.5	-1.2	12,727,957	11,768,691	959,266	7.5	12,479,696	11,452,756	1,026,940	8.2
Corpus Christi	MSA	220,524	206,105	14,419	6.5	-0.5	-1.6	223,539	207,790	15,749	7.0	217,658	200,112	17,546	8.1
Coastal Bend	WDA	296,981	277,984	18,997	6.4	-0.5	-1.5	300,489	279,729	20,760	6.9	291,714	268,583	23,131	7.9
Aransas	County	11,087	10,395	692	6.2	-0.3	-1.7	11,211	10,480	731	6.5	10,955	10,092	863	7.9
Bee	County	12,735	11,809	926	7.3	-0.7	-1.7	12,871	11,840	1,031	8.0	12,544	11,411	1,133	9.0
Brooks	County	3,325	3,049	276	8.3	-0.5	-1.6	3,333	3,039	294	8.8	3,410	3,072	338	9.9
Duval	County	5,723	5,316	407	7.1	-0.7	-1.9	5,713	5,269	444	7.8	5,632	5,125	507	9.0
Jim Wells	County	24,982	23,664	1,318	5.3	-0.4	-1.6	24,986	23,550	1,436	5.7	23,490	21,862	1,628	6.9
Kenedy	County	264	250	14	5.3	1.5	0.6	262	252	10	3.8	253	241	12	4.7
Kleberg	County	17,810	16,708	1,102	6.2	-0.4	-1.3	18,068	16,867	1,201	6.6	17,408	16,097	1,311	7.5
Live Oak	County	6,487	6,191	296	4.6	-0.5	-1.1	6,498	6,164	334	5.1	6,368	6,007	361	5.7
McMullen	County	637	618	19	3.0	0.0	-1.1	659	639	20	3.0	556	533	23	4.1
Nueces	County	179,676	168,199	11,477	6.4	-0.5	-1.4	182,117	169,574	12,543	6.9	177,176	163,308	13,868	7.8
Refugio	County	4,495	4,274	221	4.9	-0.4	-1.3	4,560	4,319	241	5.3	4,396	4,124	272	6.2
San Patricio	County	29,760	27,511	2,249	7.6	-0.6	-1.9	30,211	27,736	2,475	8.2	29,526	26,711	2,815	9.5

(M+-) Change in unemployment rate from last month (Increase) (Decrease)

(Y+-) Change in unemployment rate from last year (Increase) (Decrease)

- Earnings for all occupations Coastal Bend, expressed as hourly rate (TWC):

Coastal Bend	All Occupations-	Average \$17.28/hr.	Entry level \$8.30/hr.	Experienced workers \$21.77/hr.	Top 10% \$31.60/hr.
Texas	All Occupations-	Average \$20.30/hr.	Entry level \$9.62/hr.	Experienced workers \$ 25.68/hr.	Top 10% \$37.83/hr.

- Educational Attainment for population 25 years of age and older - Corpus Christi (Census American Fact Finder/American Community Survey):

Less than 9 th grade	9.3%	12 th grade & GED	26.7%	Associates degree	7.4%	Graduate or Professional degrees	7.0%
9 th thru 11 th grade	11.8%	Some College	24.7%	Bachelors degree	13.0%		

- Median earnings Corpus Christi by education for persons 25 years of age & up (Census AFF/ACS): **\$27,211** (\$36,380 male/ \$22,328 female)

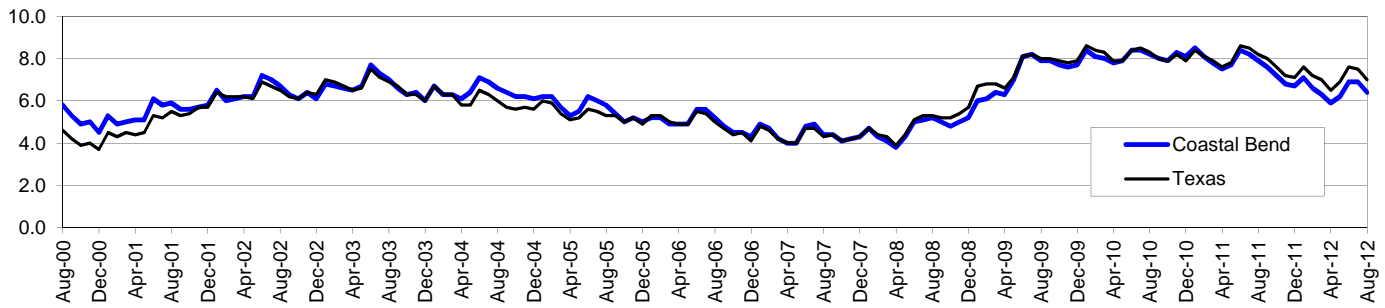
Less than High School	\$15,545	Some College or Associates	\$31,460	Graduate or Professional	\$54,717
High School & GED	\$23,028	Bachelor's	\$43,005		

Coastal Bend Workforce Development Area*

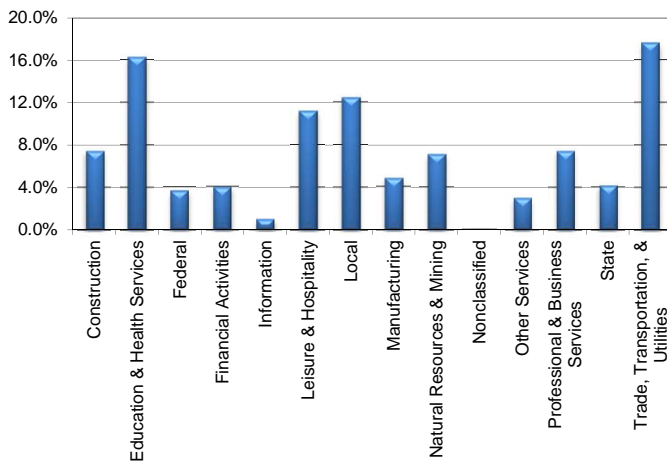
August 2012

Coastal Bend WDA					Texas				
	CLF	Employed	Unemployed	Rate		CLF	Employed	Unemployed	Rate
Aug-12	296,981	277,984	18,997	6.4	Aug-12	12,625,940	11,738,210	887,730	7.0
Jul-12	300,489	279,729	20,760	6.9	Jul-12	12,727,957	11,768,691	959,266	7.5
Aug-11	291,714	268,583	23,131	7.9	Aug-11	12,479,696	11,452,756	1,026,940	8.2

Historical Unemployment Rates



Coastal Bend WDA Industry Composition 1st Quarter 2012



Total WDA Claims

Continued Claims for the Week of the 12th

	Aug-12	Jul-12	Aug-11	OTY
Continued	2,506	2,716	3,121	-615

Texas Unemployment Insurance Claims

Continued Claims for the Week of the 12th

	Aug-12	Jul-12	Aug-11	OTY
Continued	134,067	142,604	151,488	-17,421

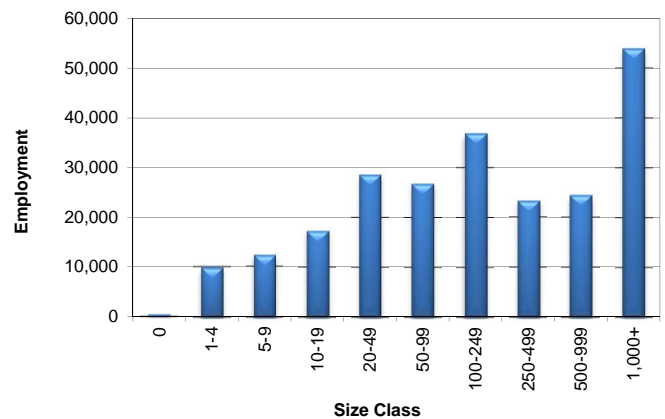
Coastal Bend WDA Average Weekly Wage

	Coastal Bend	Texas
1st Quarter 2012	\$811.68	\$1,012.73
4th Quarter 2011	\$820.49	\$972.66
1st Quarter 2011	\$731.23	\$944.26
Quarter Change	-\$8.81	\$40.07
OTY Change	\$80.45	\$68.47

NAICS Covered Employment Quarterly Data 1st Quarter 2012

SUPER SECTOR	Employment	Change	
		Quarter	Year
Construction	17,294	-950	1,134
Education & Health Services	37,908	-2,072	-963
Federal	8,574	-36	54
Financial Activities	9,280	-132	292
Information	2,296	23	23
Leisure & Hospitality	26,032	423	1,631
Local	28,965	-65	-1,314
Manufacturing	11,198	-26	805
Natural Resources & Mining	16,486	663	3,432
Nonclassified	63	38	26
Other Services	6,919	521	661
Professional & Business Services	17,328	448	350
State	9,714	-312	-1,029
Trade, Transportation, & Utilities	41,070	-71	2,966
TOTAL	233,127	-1,548	8,068

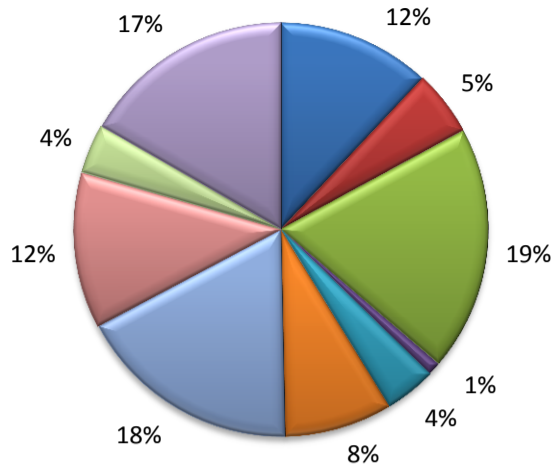
Size Class Employment Composition 1st Quarter 2012



*Counties in WDA: Aransas, Bee, Brooks, Duval, Jim Wells, Kenedy, Kleberg, Live Oak, McMullen, Nueces, Refugio, & San Patricio

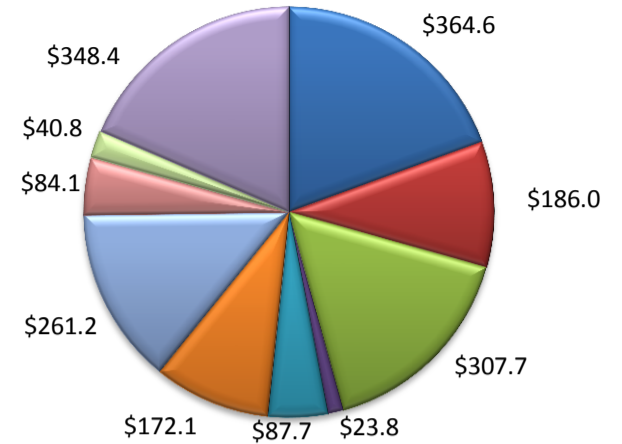
(Aransas, Nueces, San Patricio)

Industry Composition



- Mining, Logging, and Construction
- Manufacturing
- Trade, Transportation, and Utilities
- Information
- Financial Activities
- Professional and Business Services
- Education and Health Services
- Leisure and Hospitality
- Other Services
- Government

Wages by Industry (in millions)
1st Quarter 2012



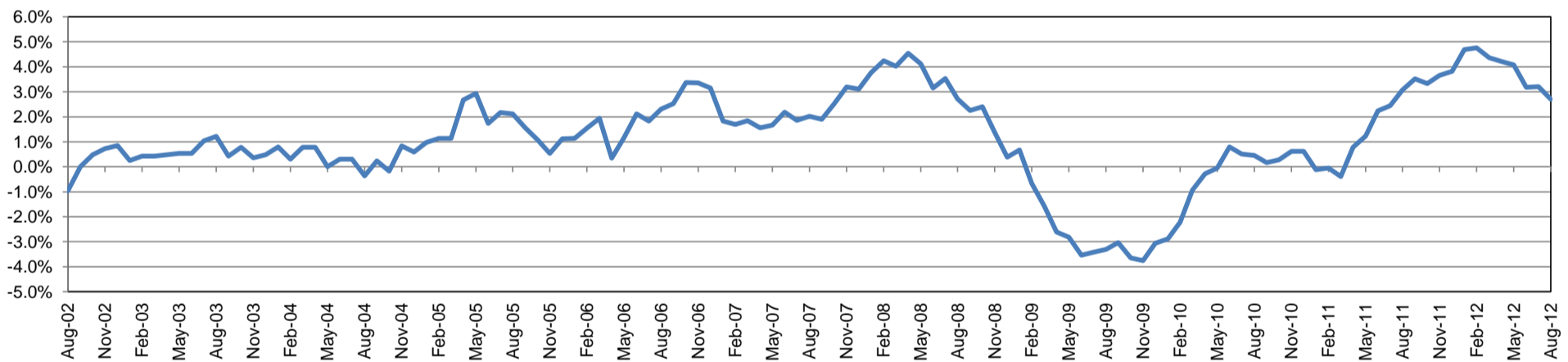
Employment by Industry

	Aug-12	Jul-12	Aug-11	Monthly Change		Annual Change	
				Actual	%	Actual	%
Total Nonfarm	186,200	186,300	181,300	-100	-0.1%	4,900	2.7%
Mining, Logging, and Construction	22,300	22,000	21,100	300	1.4%	1,200	5.7%
Manufacturing	9,500	9,600	9,600	-100	-1.0%	-100	-1.0%
Trade, Transportation, and Utilities	35,700	36,100	32,800	-400	-1.1%	2,900	8.8%
Information	1,900	1,900	2,000	0	0.0%	-100	-5.0%
Financial Activities	7,500	7,400	7,400	100	1.4%	100	1.4%
Professional and Business Services	15,600	15,400	15,200	200	1.3%	400	2.6%
Education and Health Services	32,700	32,500	31,900	200	0.6%	800	2.5%
Leisure and Hospitality	22,700	22,800	22,000	-100	-0.4%	700	3.2%
Other Services	7,200	7,200	7,100	0	0.0%	100	1.4%
Government	31,100	31,400	32,200	-300	-1.0%	-1,100	-3.4%

Industry Size Class

Size Class	Employees per firm	Number of Firms	March 2012		
			Employment in Size Class	% Total Employment	
9	1000+	16	40,535	22.6%	
8	500-999	27	19,001	10.6%	
7	250-499	45	14,662	8.2%	
6	100-249	186	28,687	16.0%	
5	50-99	311	22,130	12.4%	
4	20-49	740	22,682	12.7%	
3	10-19	1,030	14,010	7.8%	
2	5-9	1,483	9,872	5.5%	
1	1-4	3,622	7,584	4.2%	
0	0	563	0	0.0%	
Total			8,023	179,163	100.0%

Annual Growth Rate for Total Nonagricultural Employment



Unemployment Information (all estimates in thousands)

	Corpus Christi MSA				Texas (Actual)				United States (Actual)			
	C.L.F.	Emp.	Unemp.	Rate	C.L.F.	Emp.	Unemp.	Rate	C.L.F.	Emp.	Unemp.	Rate
Aug-12	220.5	206.1	14.4	6.5	12,625.9	11,738.2	887.7	7.0	155,254.0	142,558.0	12,696.0	8.2
Jul-12	223.5	207.8	15.7	7.0	12,728.0	11,768.7	959.3	7.5	156,526.0	143,126.0	13,400.0	8.6
Aug-11	217.6	200.1	17.5	8.1	12,479.7	11,452.8	1,026.9	8.2	154,343.0	140,335.0	14,008.0	9.1

Historical Unemployment Rates

