

# Coastal Bend Workforce Area

(Not Seasonally Adjusted Unemployment Rates by WDA, MSA, & County)

Area	Area Type	Latest Monthly Data April 2013						Previous Monthly Data March 2013				Year Ago April 2012			
		Labor Force	Employment	Unemployment	Rate	M+-	Y+-	Labor Force	Employment	Unemployment	Rate	Labor Force	Employment	Unemployment	Rate
United States	Nation	154,739,000	143,724,000	11,014,000	7.1	-0.5	-0.6	154,512,000	142,698,000	11,815,000	7.6	153,905,000	141,995,000	11,910,000	7.7
Texas	State	12,736,120	11,955,418	780,702	6.1	-0.2	-0.4	12,685,594	11,885,778	799,816	6.3	12,541,233	11,721,272	819,961	6.5
Corpus Christi	MSA	221,643	208,949	12,694	5.7	-0.2	-0.5	220,418	207,483	12,935	5.9	217,489	204,065	13,424	6.2
Coastal Bend	WDA	301,084	284,355	16,729	5.6	-0.1	-0.4	300,003	282,921	17,082	5.7	294,815	277,240	17,575	6.0
Aransas	County	11,191	10,555	636	5.7	0.1	0.1	11,105	10,481	624	5.6	10,920	10,309	611	5.6
Bee	County	13,114	12,255	859	6.6	0.0	0.0	13,194	12,326	868	6.6	12,979	12,116	863	6.6
Brooks	County	3,418	3,190	228	6.7	-0.4	0.1	3,393	3,153	240	7.1	3,401	3,176	225	6.6
Duval	County	6,082	5,725	357	5.9	-0.1	-0.7	6,064	5,700	364	6.0	5,858	5,469	389	6.6
Jim Wells	County	25,899	24,746	1,153	4.5	0.0	-0.2	26,294	25,101	1,193	4.5	25,125	23,934	1,191	4.7
Kenedy	County	273	266	7	2.6	0.0	-0.3	270	263	7	2.6	275	267	8	2.9
Kleberg	County	18,013	17,061	952	5.3	-0.2	-0.2	17,798	16,819	979	5.5	18,066	17,080	986	5.5
Live Oak	County	7,327	7,058	269	3.7	-0.1	-0.5	7,242	6,964	278	3.8	6,469	6,197	272	4.2
McMullen	County	722	701	21	2.9	0.3	0.3	697	679	18	2.6	643	626	17	2.6
Nueces	County	180,686	170,747	9,939	5.5	-0.2	-0.6	179,710	169,549	10,161	5.7	177,501	166,756	10,745	6.1
Refugio	County	4,595	4,405	190	4.1	-0.2	-0.3	4,634	4,434	200	4.3	4,510	4,310	200	4.4
San Patricio	County	29,764	27,646	2,118	7.1	-0.2	0.0	29,602	27,452	2,150	7.3	29,068	27,000	2,068	7.1

(M+-) Change in unemployment rate from last month (Increase) (Decrease)

(Y+-) Change in unemployment rate from last year (Increase) (Decrease)

- Earnings for all occupations Coastal Bend, expressed as hourly rate (TWC):

Coastal Bend	All Occupations-	Average \$17.28/hr.	Entry level \$8.30/hr.	Experienced workers \$21.77/hr.	Top 10% \$31.60/hr.
Texas	All Occupations-	Average \$20.30/hr.	Entry level \$9.62/hr.	Experienced workers \$ 25.68/hr.	Top 10% \$37.83/hr.

- Educational Attainment for population 25 years of age and older - Corpus Christi (Census American Fact Finder/American Community Survey):

Less than 9 <sup>th</sup> grade	9.3%	12 <sup>th</sup> grade & GED	26.7%	Associates degree	7.4%	Graduate or Professional degrees	7.0%
9 <sup>th</sup> thru 11 <sup>th</sup> grade	11.8%	Some College	24.7%	Bachelors degree	13.0%		

- Median earnings Corpus Christi by education for persons 25 years of age & up (Census AFF/ACS): \$27,211 (\$36,380 male/ \$22,328 female)

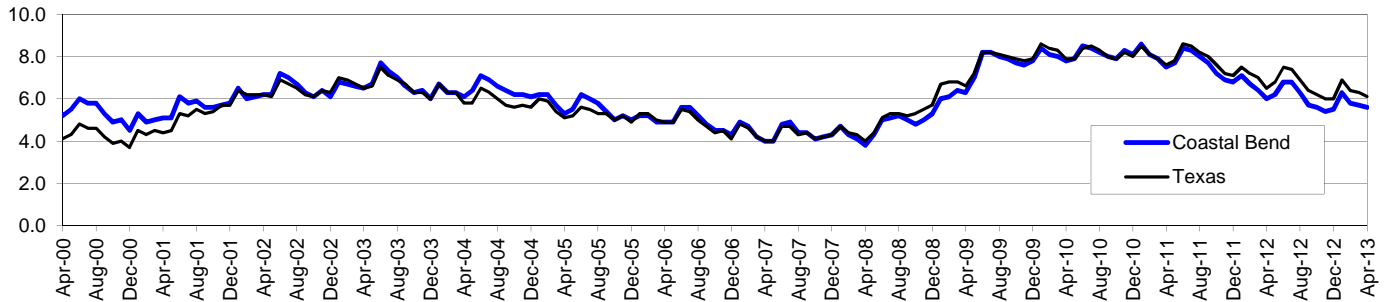
Less than High School	\$15,545	Some College or Associates	\$31,460	Graduate or Professional	\$54,717
High School & GED	\$23,028	Bachelor's	\$43,005		

# Coastal Bend Workforce Development Area\*

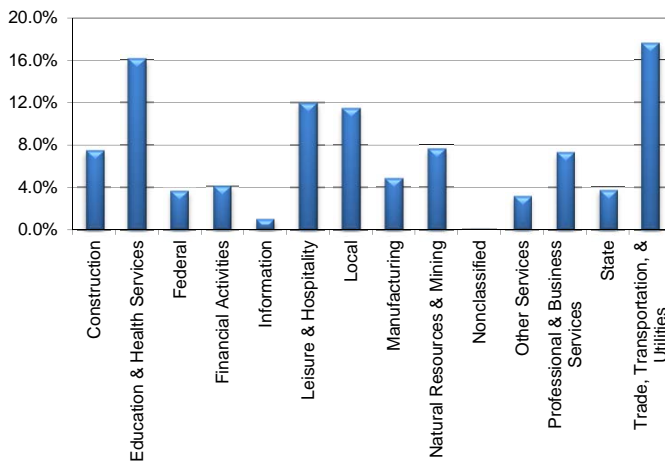
April 2013

Coastal Bend WDA					Texas				
	CLF	Employed	Unemployed	Rate		CLF	Employed	Unemployed	Rate
<b>Apr-13</b>	301,084	284,355	16,729	5.6	<b>Apr-13</b>	12,736,120	11,955,418	780,702	6.1
<b>Mar-13</b>	300,003	282,921	17,082	5.7	<b>Mar-13</b>	12,685,594	11,885,778	799,816	6.3
<b>Apr-12</b>	294,815	277,240	17,575	6.0	<b>Apr-12</b>	12,541,233	11,721,272	819,961	6.5

### Historical Unemployment Rates



### Coastal Bend WDA Industry Composition 3rd Quarter 2012



### Total WDA Claims

#### Continued Claims for the Week of the 12th

	Apr-13	Mar-13	Apr-12	OTY
<b>Continued</b>	2,660	2,714	2,302	<b>358</b>

#### Texas Unemployment Insurance Claims

#### Continued Claims for the Week of the 12th

	Apr-13	Mar-13	Apr-12	OTY
<b>Continued</b>	124,483	128,994	126,440	<b>-1,957</b>

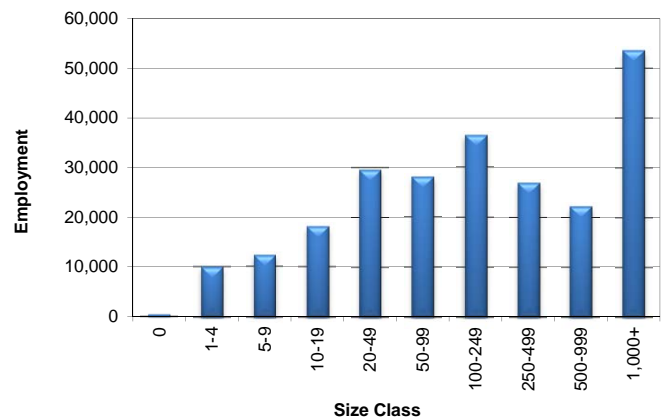
### Coastal Bend WDA Average Weekly Wage

	Coastal Bend	Texas
<b>3rd Quarter 2012</b>	\$798.99	\$929.84
<b>2nd Quarter 2012</b>	\$793.24	\$922.14
<b>3rd Quarter 2011</b>	\$782.72	\$931.54
<b>Quarter Change</b>	\$5.75	\$7.70
<b>OTY Change</b>	\$16.27	-\$1.70

### NAICS Covered Employment Quarterly Data 3rd Quarter 2012

SUPER SECTOR	Employment	Change	
		Quarter	Year
Construction	17,693	-697	809
Education & Health Services	38,267	-127	-2,077
Federal	8,621	8	-27
Financial Activities	9,607	138	279
Information	2,315	11	37
Leisure & Hospitality	28,432	474	1,949
Local	27,160	-2,015	-232
Manufacturing	11,458	88	524
Natural Resources & Mining	18,112	602	3,232
Nonclassified	69	38	34
Other Services	7,429	258	976
Professional & Business Services	17,348	-250	554
State	8,779	-697	-587
Trade, Transportation, & Utilities	41,730	419	1,683
<b>TOTAL</b>	<b>237,020</b>	<b>-1,750</b>	<b>7,154</b>

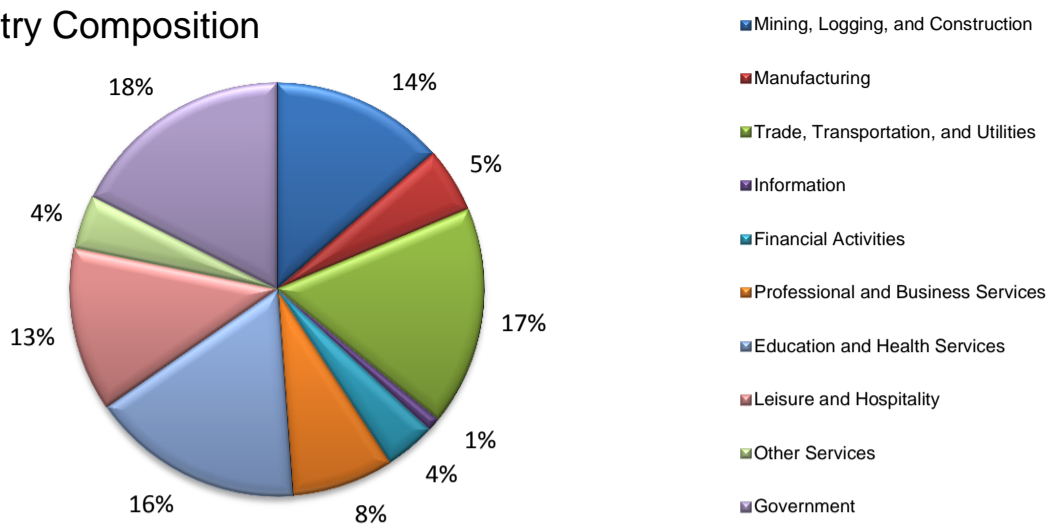
### Size Class Employment Composition 3rd Quarter 2012



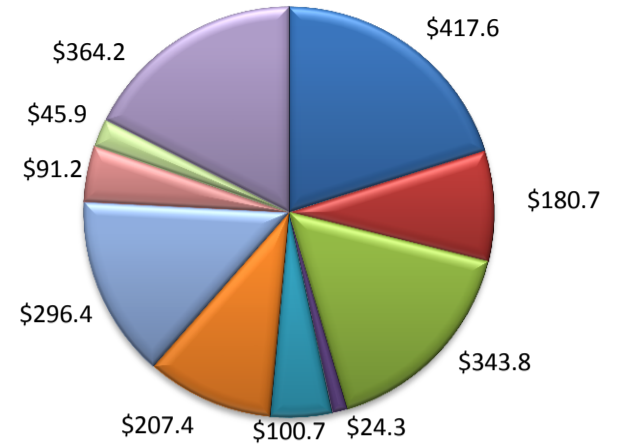
\*Counties in WDA: Aransas, Bee, Brooks, Duval, Jim Wells, Kenedy, Kleberg, Live Oak, McMullen, Nueces, Refugio, & San Patricio

(Aransas, Nueces, San Patricio)

Industry Composition



Wages by Industry (in millions)  
4th Quarter 2012



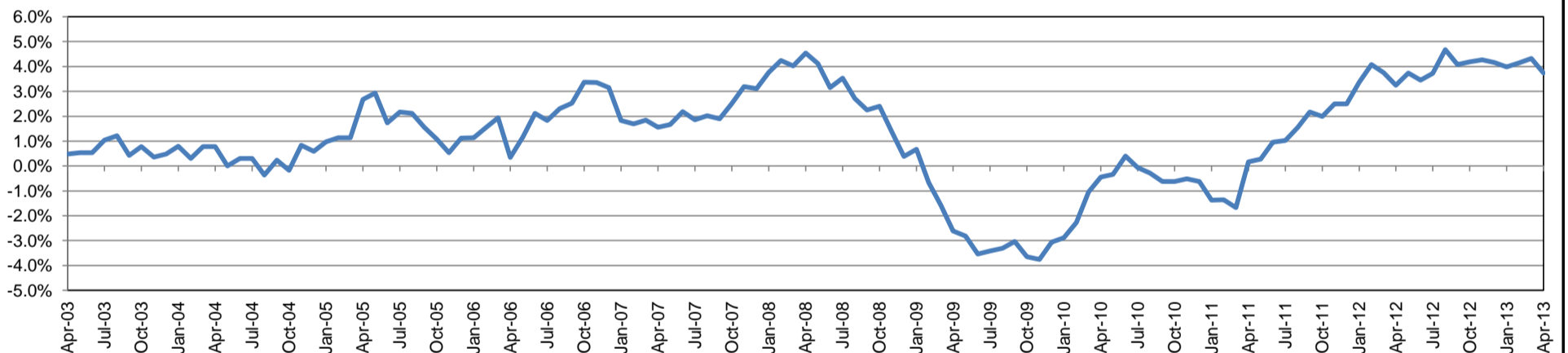
Employment by Industry

	Apr-13	Mar-13	Apr-12	Monthly Change		Annual Change	
				Actual	%	Actual	%
Total Nonfarm	191,500	190,400	184,600	1,100	0.6%	6,900	3.7%
Mining, Logging, and Construction	26,000	26,100	22,900	-100	-0.4%	3,100	13.5%
Manufacturing	9,800	9,900	9,900	-100	-1.0%	-100	-1.0%
Trade, Transportation, and Utilities	32,800	32,700	32,000	100	0.3%	800	2.5%
Information	2,000	1,900	2,000	100	5.3%	0	0.0%
Financial Activities	7,600	7,700	7,400	-100	-1.3%	200	2.7%
Professional and Business Services	15,300	15,300	15,700	0	0.0%	-400	-2.6%
Education and Health Services	31,700	31,200	30,500	500	1.6%	1,200	3.9%
Leisure and Hospitality	24,500	24,100	22,600	400	1.7%	1,900	8.4%
Other Services	8,100	8,000	7,400	100	1.3%	700	9.5%
Government	33,700	33,500	34,200	200	0.6%	-500	-1.5%

Industry Size Class December 2012

Size Class	Employees per firm	Number of Firms	Employment in Size Class	% Total Employment
9	1000+	18	41,684	22.8%
8	500-999	25	17,527	9.6%
7	250-499	51	16,634	9.1%
6	100-249	191	29,031	15.9%
5	50-99	331	23,257	12.7%
4	20-49	765	22,987	12.6%
3	10-19	1,032	13,834	7.6%
2	5-9	1,485	9,833	5.4%
1	1-4	3,719	7,728	4.2%
0	0	435	0	0.0%
Total		8,052	182,515	100.0%

Annual Growth Rate for Total Nonagricultural Employment



Unemployment Information (all estimates in thousands)

	Corpus Christi MSA				Texas (Actual)				United States (Actual)			
	C.L.F.	Emp.	Unemp.	Rate	C.L.F.	Emp.	Unemp.	Rate	C.L.F.	Emp.	Unemp.	Rate
Apr-13	221.6	208.9	12.7	5.7	12,736.1	11,955.4	780.7	6.1	154,739.0	143,724.0	11,014.0	7.1
Mar-13	220.4	207.5	12.9	5.9	12,685.6	11,885.8	799.8	6.3	154,512.0	142,698.0	11,815.0	7.6
Apr-12	217.5	204.1	13.4	6.2	12,541.3	11,721.3	820.0	6.5	153,905.0	141,995.0	11,910.0	7.7

Historical Unemployment Rates

