

# Coastal Bend Workforce Area

(Not Seasonally Adjusted Unemployment Rates by WDA, MSA, & County)

Area	Area Type	Latest Monthly Data May 2016						Previous Monthly Data April 2016				Year Ago May 2015			
		Labor Force	Employment	Unemployment	Rate	M+-	Y+-	Labor Force	Employment	Unemployment	Rate	Labor Force	Employment	Unemployment	Rate
United States	Nation	158,466,000	151,030,000	7,436,000	4.7	-0.3	-0.8	148,924,000	151,004,000	7,920,000	5.0	157,367,000	148,748,000	8,619,000	5.5
Texas	State	13,314,716	12,724,631	590,085	4.4	0.0	0.0	13,302,646	12,715,597	587,049	4.4	13,035,576	12,465,315	570,261	4.4
Corpus Christi	MSA	212,181	200,929	11,252	5.3	0.0	0.3	212,998	201,605	11,393	5.3	207,971	197,554	10,417	5.0
Coastal Bend	WDA	273,066	256,879	16,187	5.9	-0.1	0.5	274,058	257,604	16,454	6.0	271,247	256,653	14,594	5.4
Aransas	County	10,305	9,800	505	4.9	-0.2	0.2	10,340	9,813	527	5.1	10,127	9,649	478	4.7
Bee	County	10,637	9,864	773	7.3	0.0	1.2	10,556	9,787	769	7.3	10,577	9,927	650	6.1
Brooks	County	2,510	2,224	286	11.4	-0.8	1.9	2,541	2,232	309	12.2	2,631	2,380	251	9.5
Duval	County	5,006	4,459	547	10.9	-0.8	2.5	5,092	4,497	595	11.7	5,340	4,893	447	8.4
Jim Wells	County	18,236	16,368	1,868	10.2	-0.1	2.4	18,461	16,564	1,897	10.3	19,571	18,042	1,529	7.8
Kenedy	County	251	241	10	4.0	0.4	1.0	247	238	9	3.6	305	296	9	3.0
Kleberg	County	14,332	13,388	944	6.6	-0.1	0.7	14,306	13,348	958	6.7	14,596	13,742	854	5.9
Live Oak	County	5,759	5,480	279	4.8	-0.4	-0.7	5,698	5,403	295	5.2	5,863	5,622	241	4.1
McMullen	County	940	922	18	1.9	-0.3	0.2	939	918	21	2.2	989	972	17	1.7
Nueces	County	170,548	161,967	8,581	5.0	-0.1	0.2	171,244	162,565	8,679	5.1	167,236	159,239	7,997	4.8
Refugio	County	3,214	3,004	210	6.5	0.0	1.2	3,220	3,012	208	6.5	3,404	3,225	179	5.3
San Patricio	County	31,328	29,162	2,166	6.9	-0.1	0.6	31,414	29,227	2,187	7.0	30,608	28,666	1,942	6.3

(M+-) Change in unemployment rate from last month (Increase) (Decrease)

(Y+-) Change in unemployment rate from last year (Increase) (Decrease)

- Earnings for all occupations Coastal Bend, expressed as hourly rate (TWC):

<b>Coastal Bend</b>	<b>All Occupations-</b>	<b>Average \$18.35/hr.</b>	<b>Entry level \$8.58/hr.</b>	<b>Experienced workers \$23.24/hr.</b>	<b>Top 10% \$33.56/hr.</b>
<b>Texas</b>	<b>All Occupations-</b>	<b>Average \$20.97/hr.</b>	<b>Entry level \$8.88/hr.</b>	<b>Experienced workers \$ 27.02/hr.</b>	<b>Top 10% \$39.64/hr.</b>

- Educational Attainment for population 25 years of age and older - Corpus Christi (Census American Fact Finder/American Community Survey):

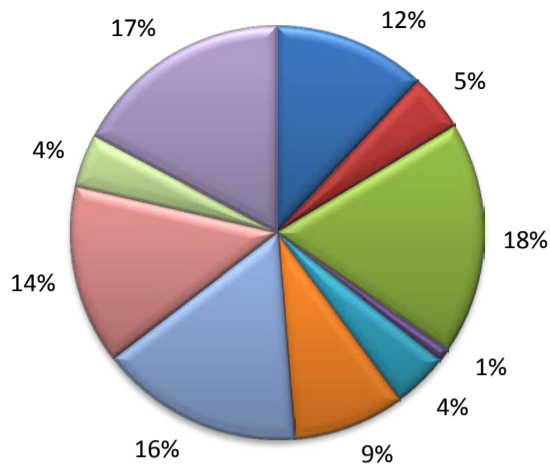
<b>Less than 9<sup>th</sup> grade</b>	<b>8.7%</b>	<b>12<sup>th</sup> grade &amp; GED</b>	<b>27.7%</b>	<b>Associates degree</b>	<b>7.0%</b>	<b>Graduate or Professional degrees</b>	<b>8.4%</b>
<b>9<sup>th</sup> thru 11<sup>th</sup> grade</b>	<b>9.3%</b>	<b>Some College</b>	<b>25.1%</b>	<b>Bachelors degree</b>	<b>13.8%</b>		

- Median earnings Corpus Christi by education for persons 25 years of age & up (Census AFF/ACS): **\$27,211** (\$36,380 male/ \$22,328 female)

<b>Less than High School</b>	<b>\$15,437</b>	<b>Some College or Associates</b>	<b>\$28,739</b>	<b>Graduate or Professional</b>	<b>\$56,681</b>
<b>High School &amp; GED</b>	<b>\$26,818</b>	<b>Bachelor's</b>	<b>\$44,078</b>		

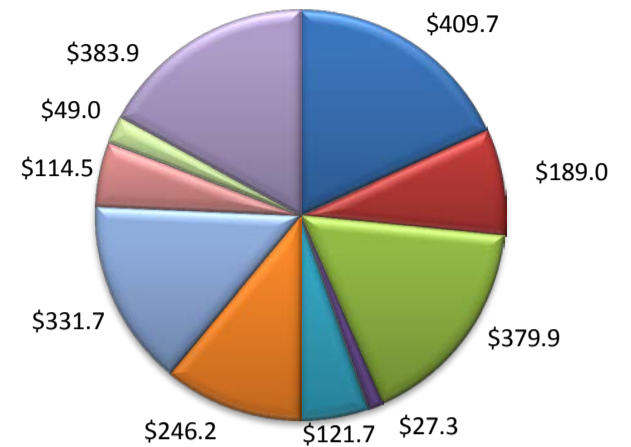
(Aransas, Nueces, San Patricio)

Industry Composition



- Mining, Logging, and Construction
- Manufacturing
- Trade, Transportation, and Utilities
- Information
- Financial Activities
- Professional and Business Services
- Education and Health Services
- Leisure and Hospitality
- Other Services
- Government

Wages by Industry (in millions)  
4th Quarter 2015



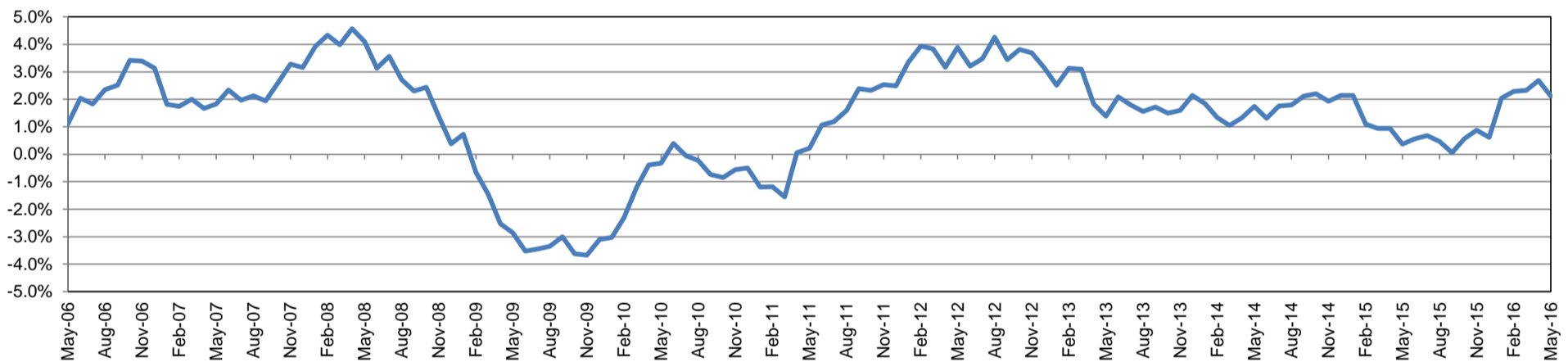
Employment by Industry

	May-16	Apr-16	May-15	Monthly Change		Annual Change	
				Actual	%	Actual	%
Total Nonfarm	197,900	198,700	193,800	-800	-0.4%	4,100	2.1%
Mining, Logging, and Construction	23,500	24,300	23,600	-800	-3.3%	-100	-0.4%
Manufacturing	8,900	9,100	9,400	-200	-2.2%	-500	-5.3%
Trade, Transportation, and Utilities	36,000	36,500	35,600	-500	-1.4%	400	1.1%
Information	2,000	2,000	2,100	0	0.0%	-100	-4.8%
Financial Activities	8,600	8,600	8,400	0	0.0%	200	2.4%
Professional and Business Services	17,400	17,500	16,500	-100	-0.6%	900	5.5%
Education and Health Services	31,400	31,100	29,600	300	1.0%	1,800	6.1%
Leisure and Hospitality	27,800	27,300	26,900	500	1.8%	900	3.4%
Other Services	8,200	8,200	8,000	0	0.0%	200	2.5%
Government	34,100	34,100	33,700	0	0.0%	400	1.2%

Industry Size Class

Size Class	Employees per firm	Number of Firms	December 2015		
			Employment in Size Class	% Total Employment	
9	1000+	21	44,399	23.6%	
8	500-999	19	13,026	6.9%	
7	250-499	51	17,443	9.3%	
6	100-249	223	33,827	18.0%	
5	50-99	314	21,615	11.5%	
4	20-49	843	25,507	13.6%	
3	10-19	1,079	14,741	7.8%	
2	5-9	1,501	9,995	5.3%	
1	1-4	3,670	7,571	4.0%	
0	0	585	0	0.0%	
Total			8,306	188,124	100.0%

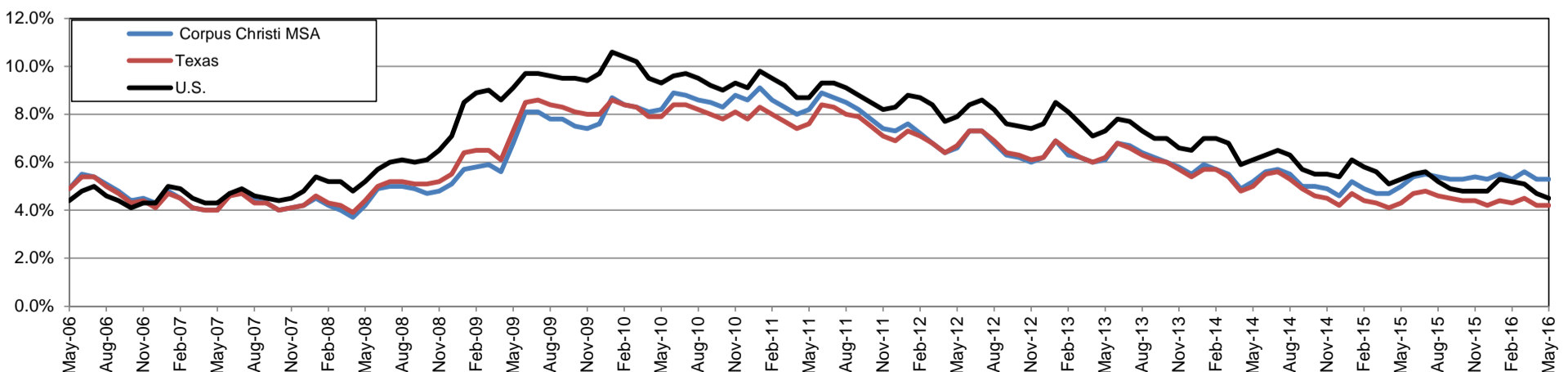
Annual Growth Rate for Total Nonagricultural Employment



Unemployment Information (all estimates in thousands)

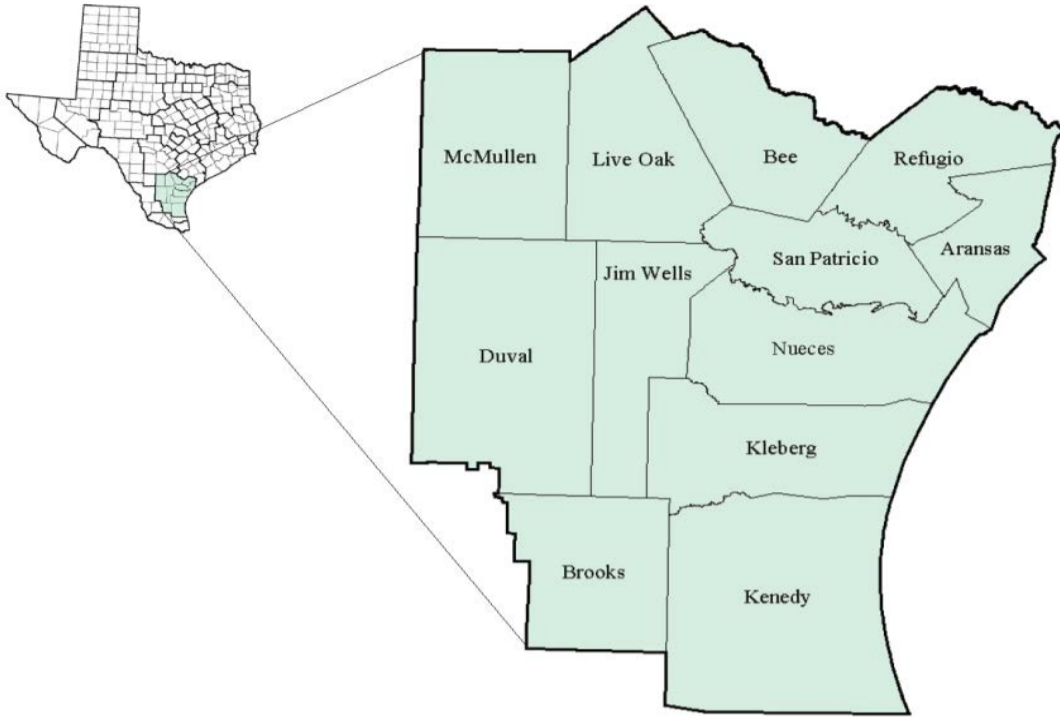
	Corpus Christi MSA				Texas (Actual)				United States (Actual)			
	C.L.F.	Emp.	Unemp.	Rate	C.L.F.	Emp.	Unemp.	Rate	C.L.F.	Emp.	Unemp.	Rate
May-16	212.2	200.9	11.3	5.3	13,281.2	12,722.1	559.1	4.2	158,800.0	151,594.0	7,207.0	4.5
Apr-16	213.0	201.6	11.4	5.3	13,256.6	12,696.1	560.5	4.2	158,488.0	151,075.0	7,413.0	4.7
May-15	208.0	197.6	10.4	5.0	13,104.9	12,539.2	565.7	4.3	157,719.0	149,349.0	8,370.0	5.3

Historical Unemployment Rates



# Coastal Bend Workforce Development Area

## May 2016



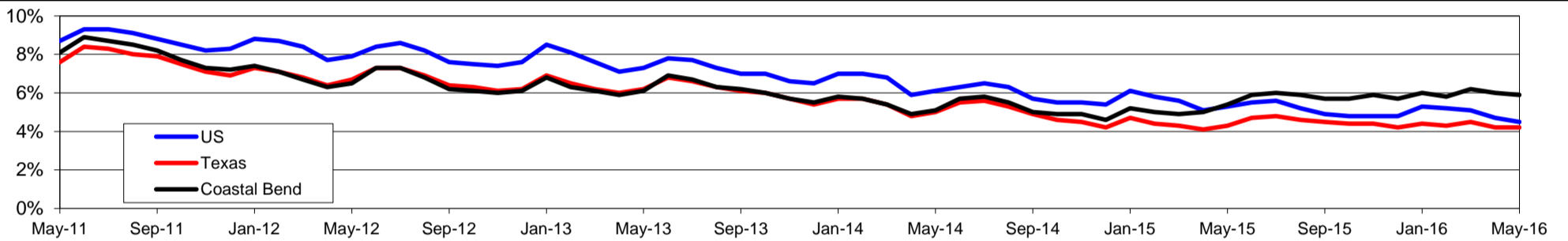
WDA Labor Force Statistics				
	May-16	Apr-16	May-15	OTY
CLF	273,066	274,058	271,247	1,819
Employed	256,879	257,604	256,653	226
Unemployed	16,187	16,454	14,594	1,593
Rate	5.9%	6.0%	5.4%	0.5%

Texas Labor Force Statistics				
	May-16	Apr-16	May-15	OTY
CLF	13,281,151	13,256,609	13,104,878	176,273
Employed	12,722,051	12,696,103	12,539,222	182,829
Unemployed	559,100	560,506	565,656	-6,556
Rate	4.2%	4.2%	4.3%	-0.1%

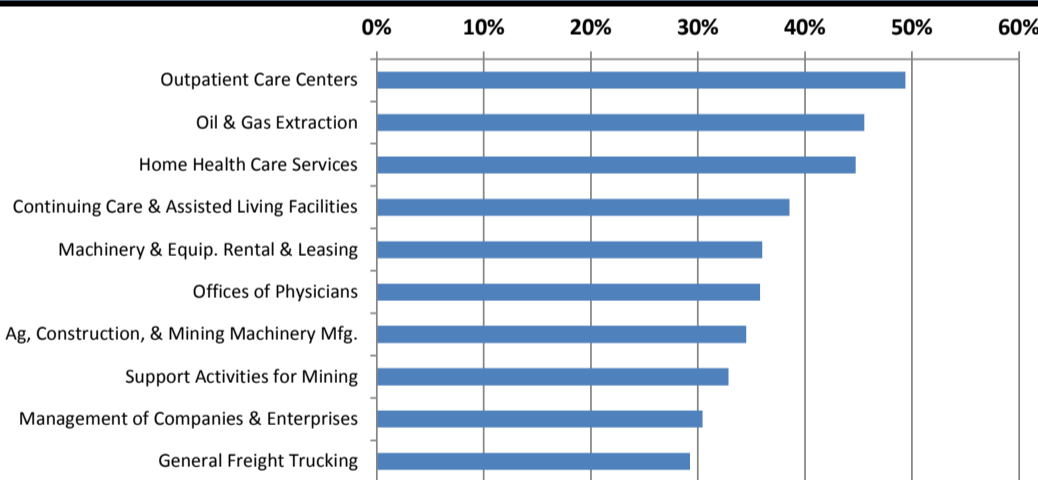
US Labor Force Statistics				
	May-16	Apr-16	May-15	OTY
CLF	158,800,000	158,488,000	157,719,000	1,081,000
Employed	151,594,000	151,075,000	149,349,000	2,245,000
Unemployed	7,207,000	7,413,000	8,370,000	-1,163,000
Rate	4.5%	4.7%	5.3%	-0.8%

Continued Claims for the Week of the 12th				
	May-16	Apr-16	May-15	OTY
WDA	5,196	5,272	4,750	446
Texas	147,222	148,511	139,731	7,491

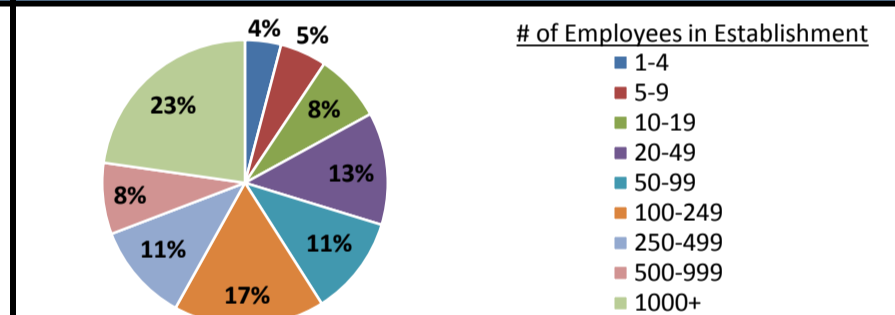
### Historical Unemployment Rates



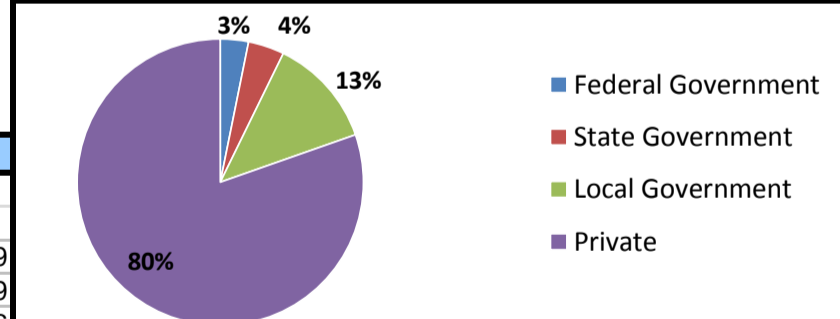
### Projected Fastest Growing Industries in WDA (% growth 2012-2022)



### Employment by Size Class (4th Quarter 2015)



### Employment by Ownership (4th Quarter 2015)



### Average Weekly Wage (4th Quarter 2015)

				Change	
	Q4 2015	Q3 2015	Q4 2014	Quarter	Year
WDA	\$897	\$840	\$916	\$57	-\$19
Texas	\$1,099	\$999	\$1,070	\$100	\$29
US	\$1,082	\$974	\$1,036	\$108	\$46

### Employment by Industry (4th Quarter 2015, Percent Change)

Industry	Employment	% of total	% Change	
			Quarter	Year
Natural resources and mining	12,991	5.4%	-5.8%	-33.9%
Construction	20,483	8.5%	-1.6%	-5.7%
Manufacturing	14,061	5.8%	-1.8%	-6.7%
Trade, transportation and utilities	46,502	19.2%	0.8%	-2.3%
Information	2,480	1.0%	3.1%	1.0%
Financial activities	10,434	4.3%	-0.2%	-3.8%
Professional and business services	19,016	7.9%	-0.4%	0.8%
Education and health services	65,730	27.2%	6.1%	1.7%
Leisure and hospitality	31,296	12.9%	-4.8%	1.5%
Other services	6,825	2.8%	-5.0%	-8.5%
Public administration	11,941	4.9%	0.7%	3.7%
<b>Total</b>	<b>241,759</b>	<b>100.0%</b>	<b>0.3%</b>	<b>-3.5%</b>

### Employment by Industry (4th Quarter 2015)

