



Coastal Bend Workforce Area

Area	Area Type	Latest Monthly Data November 2009				Previous Month October 2009				Year Ago November 2008			
		Labor Force	Employment	Unemployment	Rate	Labor Force	Employment	Unemployment	Rate	Labor Force	Employment	Unemployment	Rate
U.S.	Nation	153,539,000	139,132,000	14,407,000	9.4	153,635,000	139,088,000	14,547,000	9.5	154,624,000	144,609,000	10,015,000	6.5
Texas	State	12,103,220	11,149,340	953,880	7.9	12,069,719	11,090,397	979,322	8.1	11,808,224	11,167,592	640,632	5.4
Corpus Christi	MSA	207,825	192,155	15,670	7.5	207,230	191,287	15,943	7.7	205,171	194,961	10,210	5.0
Coastal Bend	WDA	279,256	257,419	21,837	7.8	278,353	256,002	22,351	8.0	272,978	259,419	13,559	5.0
Aransas	County	11,577	10,718	859	7.4	11,538	10,669	869	7.5	11,425	10,874	551	4.8
Bee	County	11,925	10,798	1,127	9.5	11,864	10,691	1,173	9.9	11,403	10,645	758	6.6
Brooks	County	3,637	3,295	342	9.4	3,628	3,273	355	9.8	3,379	3,195	184	5.4
Duval	County	5,709	5,055	654	11.5	5,725	5,025	700	12.2	5,315	5,017	298	5.6
Jim Wells	County	22,940	20,790	2,150	9.4	22,932	20,663	2,269	9.9	21,427	20,493	934	4.4
Kenedy	County	257	235	22	8.6	256	233	23	9.0	239	233	6	2.5
Kleberg	County	16,868	15,703	1,165	6.9	16,740	15,567	1,173	7.0	16,289	15,558	731	4.5
Live Oak	County	5,357	4,969	388	7.2	5,301	4,908	393	7.4	5,193	4,945	248	4.8
McMullen	County	362	337	25	6.9	352	327	25	7.1	380	357	23	6.1
Nueces	County	165,165	153,342	11,823	7.2	164,798	152,649	12,149	7.4	163,554	155,581	7,973	4.9
Refugio	County	4,375	4,081	294	6.7	4,325	4,028	297	6.9	4,181	4,015	166	4.0
San Patricio	County	31,084	28,096	2,988	9.6	30,894	27,969	2,925	9.5	30,193	28,506	1,687	5.6

Earnings for all occupations Coastal Bend, expressed as hourly rate (TWC):

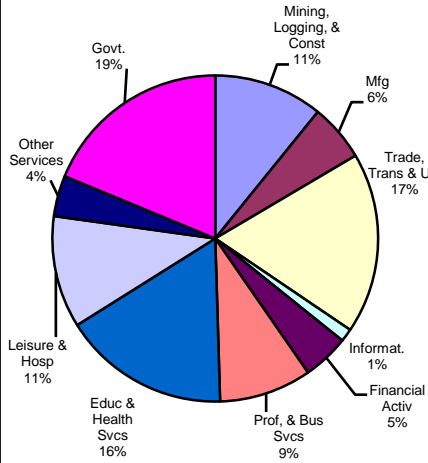
Coastal Bend - All Occupations - Average \$16.20/hr.; Entry level \$7.51/hr.; Experienced workers \$20.54/hr.; top 10% \$29.66/hr.
Texas - All Occupations - Average \$18.90/hr.; Entry level \$8.16/hr.; Experienced workers \$ 24.27/hr.; top 10% \$35.43/hr.

Educational Attainment for population 25 years of age and older - Corpus Christi (Census American Fact Finder / American Community Survey):
Less than 9th grade 9.9%; 9th thru 11th grade 12.0%; 12th grade and GED 27.4%; some college 23.3%; Associates degree 7.1%; Bachelors degree 13.2%; Graduate or Professional degrees 7.1%

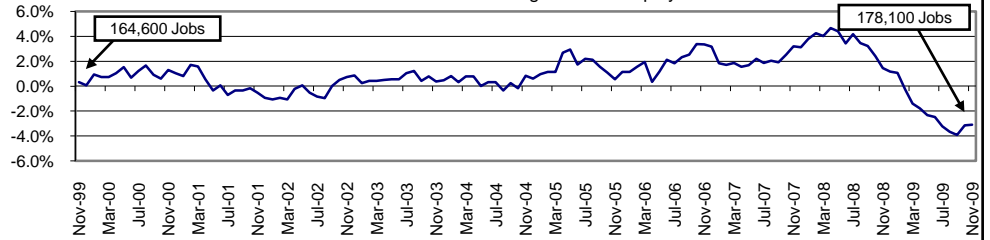
Median earnings Corpus Christi by education for persons 25 years of age & up (Census AFF / ACS): \$27,211 (\$33,893 male/ \$21,233 female)

Less than High School	\$15,396	Some College or Associates	\$30,595	Graduate & Professional	\$53,951
High School & GED	\$21,460	Bachelor's	\$41,044		

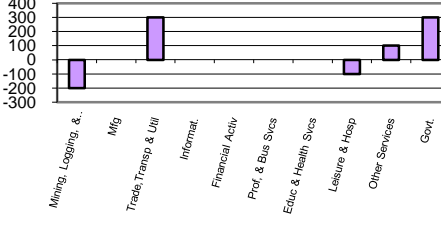
Industry Composition



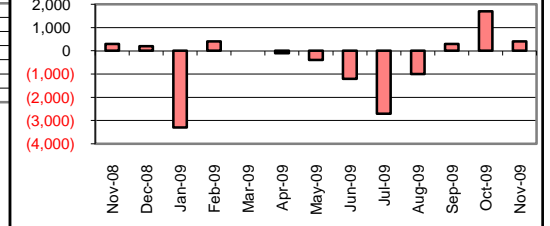
Annual Growth Rate for Total NonAgricultural Employment



Monthly Change by Industry



Monthly Change in Total Nonag Employment



Employment by Industry

	Employment			Monthly Change		Annual Change	
	Nov-2009	Oct-2009	Nov-2008	Actual	%	Actual	%
Total Nonagricultural	178,100	177,700	183,800	400	0.2%	-5,700	-3.1%
Mining, Logging, & Const	19,300	19,500	21,900	-200	-1.0%	-2,600	-11.9%
Manufacturing	10,100	10,100	11,000	0	0.0%	-900	-8.2%
Trade, Transp., & Utilities	32,000	31,700	33,500	300	1.0%	-1,500	-4.5%
Information	2,300	2,300	2,400	0	0.0%	-100	-4.2%
Financial Activities	8,200	8,200	8,200	0	0.0%	0	0.0%
Profes., & Business Svcs	16,300	16,300	17,000	0	0.0%	-700	-4.1%
Education & Health Svcs	29,500	29,500	28,700	0	0.0%	800	2.8%
Leisure & Hospitality	19,800	19,900	20,100	-100	-0.5%	-300	-1.5%
Other Services	7,200	7,100	7,100	100	1.4%	100	1.4%
Government	33,400	33,100	33,900	300	0.9%	-500	-1.5%

Size Class of Industries

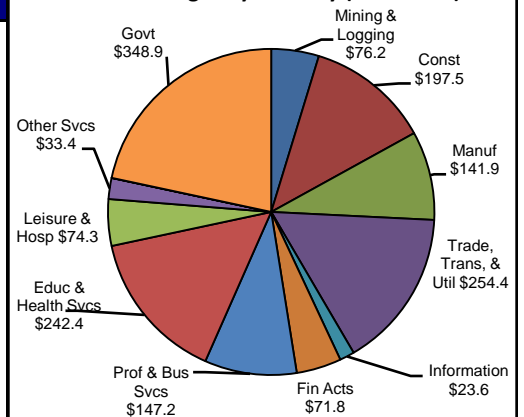
as of June 2009

Size Class	Employees Per Firm	Number of Firms	Employment in Size Class	% of Total Employment
9	1000+	17	40847	23.5%
8	500-999	22	15218	8.8%
7	250-499	41	14011	8.1%
6	100-249	188	28746	16.6%
5	50-99	284	19967	11.5%
4	20-49	734	22601	13.0%
3	10-19	1029	13948	8.0%
2	5-9	1572	10460	6.0%
1	1-4	3678	7797	4.5%
0	0	580	0	0.0%
TOTAL		8145	173595	100.0%

Comments for November 2009

Total Nonagricultural Employment in the Corpus Christi MSA increased by 400 jobs over the month. This was the third consecutive increase for the area and the fourth over-the-month increase for the year. November's increase was a little more than a third of the five-year average increase of 1,100 jobs. Since January, Total Nonagricultural Employment actually fell 2,600 jobs. Construction of Buildings employment decreased 3.3 percent over the month. This was the largest over-the-month decrease since May when employment decreased by 3.1 percent. This industry also lost 1,200 jobs over the past twelve months. This decrease matched the October over-the-year decrease. General Merchandise Stores added 100 jobs over the month. This seasonal increase came about as area stores increased staff for the Christmas shopping season. Since last November, employment decreased by 2.2 percent.

2nd Quarter Wages by Industry (in millions)



Unemployment Information (all estimates are in thousands)

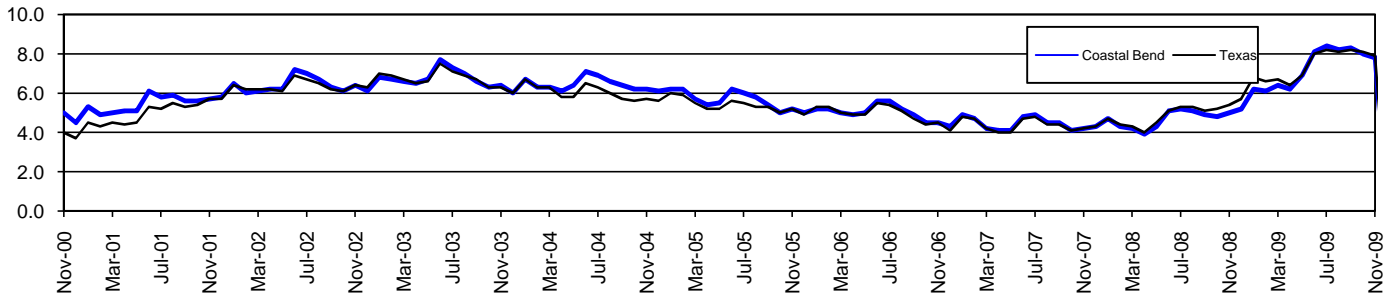
	Corpus Christi MSA				Texas (Actual)				United States (Actual)			
	C.L.F.	Emp.	Unemp.	% Rate	C.L.F.	Emp.	Unemp.	% Rate	C.L.F.	Emp.	Unemp.	% Rate
Nov-2009	207.9	192.2	15.7	7.5	12,103.2	11,149.3	953.9	7.9	153,539.0	139,132.0	14,407.0	9.4
Oct-2009	207.2	191.3	15.9	7.7	12,069.7	11,090.4	979.3	8.1	153,635.0	139,088.0	14,547.0	9.5
Nov-2008	205.2	195.0	10.2	5.0	11,808.2	11,167.6	640.6	5.4	154,624.0	144,609.0	10,015.0	6.5

Coastal Bend Workforce Development Area*

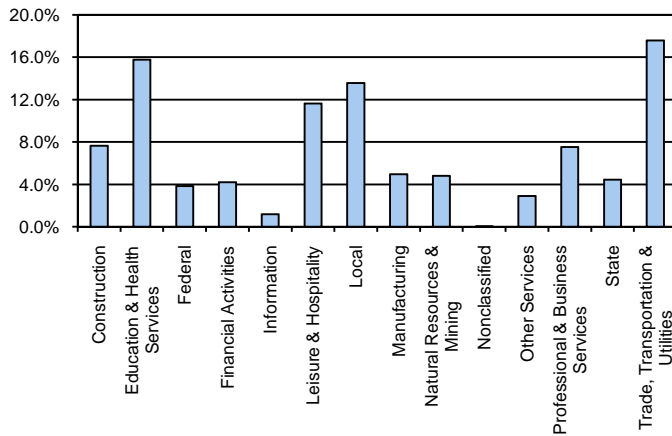
November 2009

Coastal Bend WDA					Texas				
	CLF	Employed	Unemployed	Rate		CLF	Employed	Unemployed	Rate
Nov-09	279,256	257,419	21,837	7.8	Nov-09	12,103,220	11,149,340	953,880	7.9
Oct-09	278,353	256,002	22,351	8.0	Oct-09	12,069,719	11,090,397	979,322	8.1
Nov-08	272,978	259,419	13,559	5.0	Nov-08	11,808,224	11,167,592	640,632	5.4

Historical Unemployment Rates



Coastal Bend WDA Industry Composition 2nd Quarter 2009



Total WDA Claims

	Nov-09	Oct-09	Nov-08	OTY
Initial	2,477	2,466	1,702	775
Continued	12,681	11,304	6,027	6,654
Continued Claims for the Week of the 12th				
Continued	4,283	4,459	2,043	2,240

Texas Unemployment Insurance Claims Filed

	Nov-09	Oct-09	Nov-08	OTY
Initial	98,119	107,555	89,769	8,350
Continued	1,219,676	1,085,906	633,949	585,727
Continued Claims for the Week of the 12th				
Continued	259,781	258,201	155,335	104,446

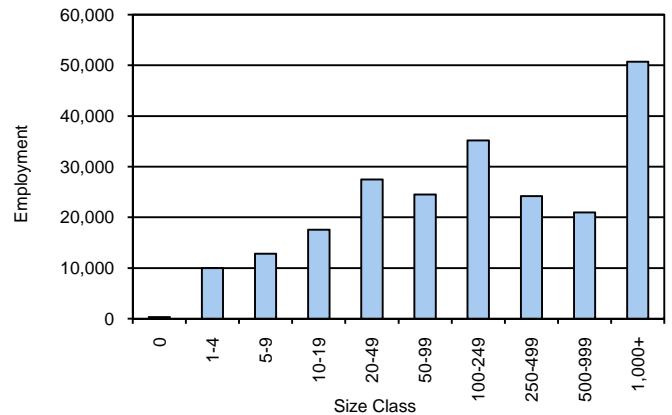
Coastal Bend WDA Average Weekly Wage

	Coastal Bend	WDA Qtr. Chg.	Texas
2nd Quarter 2009	\$687.04	-\$19.40	\$838.34
1st Quarter 2009	\$706.44	WDA OTY Chg.	\$885.88
2nd Quarter 2008	\$706.95	-\$19.91	\$848.95

NAICS Covered Employment Quarterly Data 2nd Quarter 2009

SUPER SECTOR	Employment	Change	
		Quarter	Year
Construction	17,074	-2,169	-2,547
Education & Health Services	35,287	480	1,156
Federal	8,567	100	340
Financial Activities	9,351	-217	-781
Information	2,617	2	-158
Leisure & Hospitality	26,010	1,463	265
Local	30,342	-111	128
Manufacturing	11,076	-634	-1,157
Natural Resources & Mining	10,744	-1,288	-2,585
Nonclassified	51	27	-41
Other Services	6,503	65	-245
Professional & Business Services	16,846	-758	-1,475
State	9,941	148	663
Trade, Transportation & Utilities	39,347	-608	-1,652
TOTAL	223,756	-3,500	-8,089

Size Class Employment Composition 2nd Quarter 2009



*Counties in WDA: Aransas, Bee, Brooks, Duval, Jim Wells, Kenedy, Kleberg, Live Oak, McMullen, Nueces, Refugio, & San Patricio

Available at <http://www.tracer2.com/>