



Coastal Bend Workforce Area

Area	Area Type	Latest Monthly Data May 2010				Previous Monthly Data April 2010				Year Ago May 2009			
		Labor Force	Employment	Unemployment	Rate	Labor Force	Employment	Unemployment	Rate	Labor Force	Employment	Unemployment	Rate
U.S.	Nation	153,866,000	139,497,000	14,369,000	9.3	153,911,000	139,302,000	14,609,000	9.5	154,336,000	140,363,000	13,973,000	9.1
Texas	State	12,162,174	11,186,911	975,263	8.0	12,210,433	11,221,189	989,244	8.1	11,872,448	11,004,314	868,134	7.3
Corpus Christi	MSA	212,815	195,773	17,042	8.0	213,124	196,138	16,986	8.0	207,005	192,724	14,281	6.9
Coastal Bend	WDA	283,299	260,455	22,844	8.1	284,215	261,311	22,904	8.1	276,993	256,782	20,211	7.3
Aransas	County	11,902	10,971	931	7.8	11,978	10,991	987	8.2	11,560	10,800	760	6.6
Bee	County	12,099	10,981	1,118	9.2	12,155	11,011	1,144	9.4	11,935	10,847	1,088	9.1
Brooks	County	3,376	3,066	310	9.2	3,423	3,098	325	9.5	3,368	3,044	324	9.6
Duval	County	5,243	4,634	609	11.6	5,276	4,653	623	11.8	5,327	4,729	598	11.2
Jim Wells	County	22,371	20,509	1,862	8.3	22,514	20,614	1,900	8.4	22,163	20,091	2,072	9.3
Kenedy	County	244	236	8	3.3	253	239	14	5.5	247	233	14	5.7
Kleberg	County	17,458	16,255	1,203	6.9	17,671	16,471	1,200	6.8	17,195	16,050	1,145	6.7
Live Oak	County	5,079	4,711	368	7.2	5,168	4,783	385	7.4	5,211	4,819	392	7.5
McMullen	County	353	325	28	7.9	359	333	26	7.2	361	337	24	6.6
Nueces	County	168,990	156,298	12,692	7.5	169,317	156,590	12,727	7.5	164,855	153,864	10,991	6.7
Refugio	County	4,261	3,965	296	6.9	4,272	3,971	301	7.0	4,181	3,908	273	6.5
San Patricio	County	31,923	28,504	3,419	10.7	31,829	28,557	3,272	10.3	30,590	28,060	2,530	8.3

Earnings for all occupations Coastal Bend, expressed as hourly rate (TWC):

Coastal Bend - All Occupations - Average \$16.20/hr.; Entry level \$7.51/hr.; Experienced workers \$20.54/hr.; top 10% \$29.66/hr.

Texas - All Occupations - Average \$18.90/hr.; Entry level \$8.16/hr.; Experienced workers \$ 24.27/hr.; top 10% \$35.43/hr.

Educational Attainment for population 25 years of age and older - Corpus Christi (Census American Fact Finder / American Community Survey):

Less than 9th grade 9.9%; 9th thru 11th grade 12.0%; 12th grade and GED 27.4%; some college 23.3%; Associates degree 7.1%;

Bachelors degree 13.2%; Graduate or Professional degrees 7.1%

Median earnings Corpus Christi by education for persons 25 years of age & up (Census AFF / ACS): \$27,211 (\$33,893 male/ \$21,233 female)

Less than High School \$15,396 Some College or Associates \$30,595 Graduate & Professional \$53,951

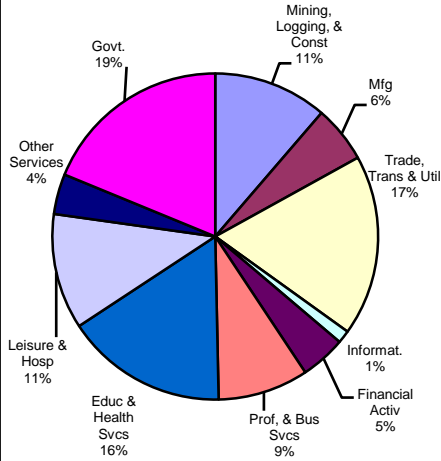
High School & GED \$21,460 Bachelor's \$41,044

Corpus Christi MSA

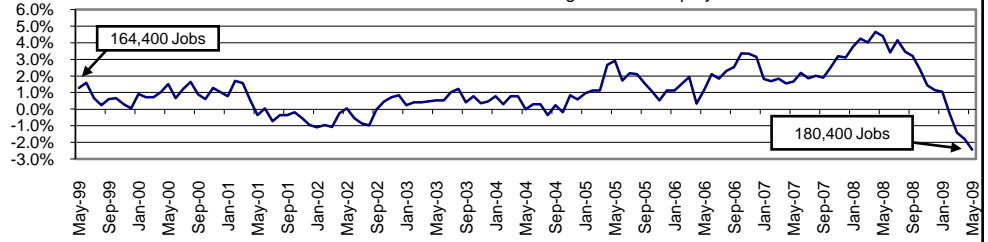
(Aransas, Nueces, San Patricio)

May-2009

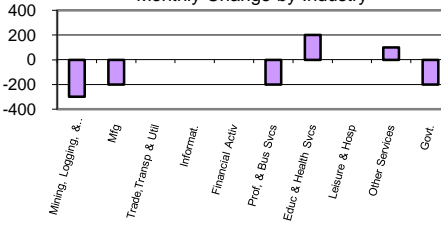
Industry Composition



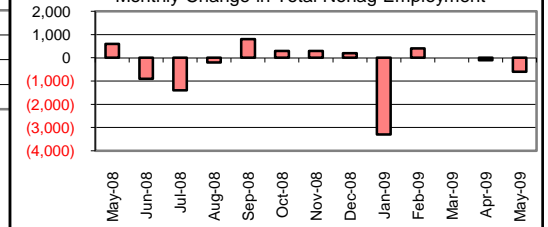
Annual Growth Rate for Total NonAgricultural Employment



Monthly Change by Industry



Monthly Change in Total Nonag Employment



Employment by Industry

	Employment			Monthly Change		Annual Change	
	May-2009	Apr-2009	May-2008	Actual	%	Actual	%
Total Nonagricultural	180,400	181,000	184,900	-600	-0.3%	-4,500	-2.4%
Mining, Logging, & Const	20,400	20,700	23,000	-300	-1.5%	-2,600	-11.3%
Manufacturing	10,200	10,400	11,200	-200	-1.9%	-1,000	-8.9%
Trade, Transp., & Utilities	32,400	32,400	32,700	0	0.0%	-300	-0.9%
Information	2,300	2,300	2,500	0	0.0%	-200	-8.0%
Financial Activities	8,100	8,100	8,300	0	0.0%	-200	-2.4%
Profes., & Business Svcs	16,200	16,400	16,600	-200	-1.2%	-400	-2.4%
Education & Health Svcs	29,000	28,800	27,600	200	0.7%	1,400	5.1%
Leisure & Hospitality	20,700	20,700	21,400	0	0.0%	-700	-3.3%
Other Services	7,200	7,100	7,300	100	1.4%	-100	-1.4%
Government	33,900	34,100	34,300	-200	-0.6%	-400	-1.2%

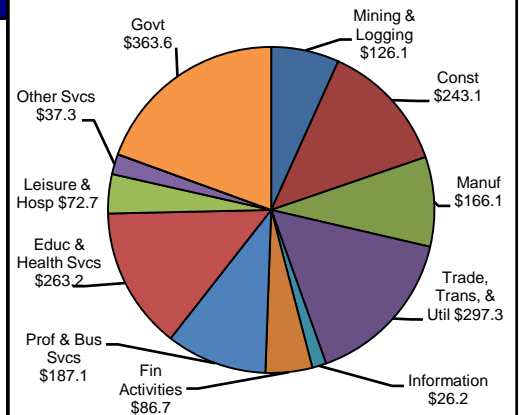
Size Class of Industries as of December 2008

Size Class	Employees Per Firm	Number of Firms	Employment in Size Class	% of Total Employment
9	1000+	20	44356	24.7%
8	500-999	20	14239	7.9%
7	250-499	49	16943	9.4%
6	100-249	188	28384	15.8%
5	50-99	297	20319	11.3%
4	20-49	751	22848	12.7%
3	10-19	1049	14206	7.9%
2	5-9	1570	10323	5.7%
1	1-4	3801	7930	4.4%
0	0	545	0	0.0%
TOTAL		8290	179548	100.0%

Comments for May 2009

Total Nonagricultural Employment in the Corpus Christi MSA lost 600 positions in May. Mining, Logging, and Construction lost 300 jobs over the month. Education and Health Services gained 200 staff in May. This industry has added 1,400 positions over the year for a 5.1 percent annual growth rate. Other Services grew by 100 staff since last month. This growth represented a 1.4 percent increase over last month. Manufacturing and Professional and Business Services each fell by 200 positions in May. The Corpus Christi MSA has lost 4,500 jobs over the past year, representing an annual growth rate of -2.4 percent.

4th Quarter Wages by Industry (in millions)



Unemployment Information (all estimates are in thousands)

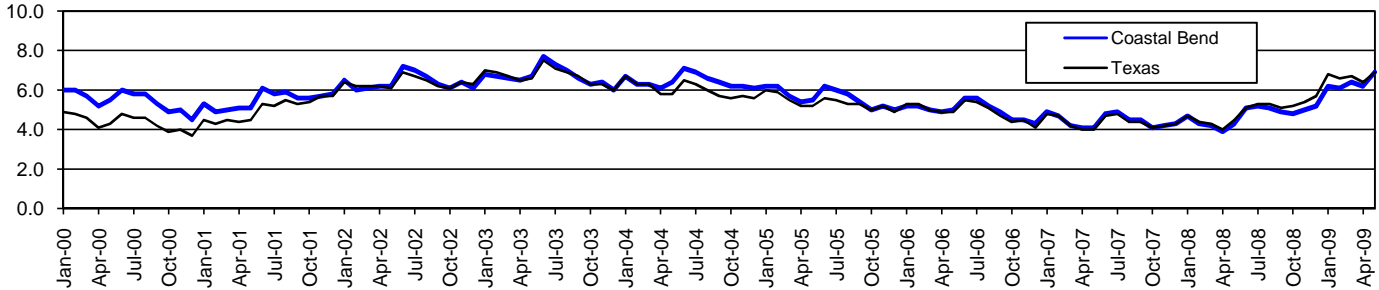
	Corpus Christi MSA				Texas (Actual)				United States (Actual)			
	C.L.F.	Emp.	Unemp.	% Rate	C.L.F.	Emp.	Unemp.	% Rate	C.L.F.	Emp.	Unemp.	% Rate
May-2009	207.1	193.5	13.6	6.6	11,920.6	11,098.5	822.0	6.9	154,336.0	140,363.0	13,973.0	9.1
Apr-2009	206.8	194.7	12.1	5.9	11,873.4	11,118.9	754.5	6.4	153,834.0	140,586.0	13,248.0	8.6
May-2008	204.6	195.8	8.8	4.3	11,639.3	11,120.2	519.1	4.5	154,003.0	145,927.0	8,076.0	5.2

Coastal Bend Workforce Development Area

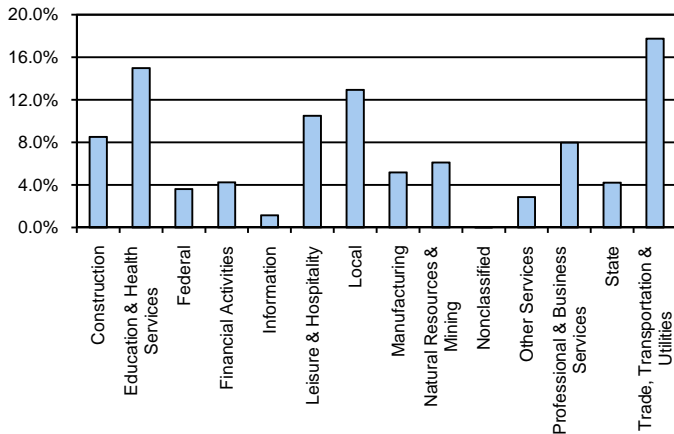
May 2009

Coastal Bend WDA					Texas				
	CLF	Employed	Unemployed	Rate		CLF	Employed	Unemployed	Rate
May-09	278,259	258,986	19,273	6.9	May-09	11,920,554	11,098,518	822,036	6.9
Apr-09	277,295	260,133	17,162	6.2	Apr-09	11,873,461	11,118,947	754,514	6.4
May-08	271,559	259,776	11,783	4.3	May-08	11,639,228	11,120,162	519,066	4.5

Historical Unemployment Rates



Coastal Bend WDA Industry Composition 4th Quarter 2008



Total WDA Claims

	May-09	Apr-09	May-08	OTY
Initial	2,905	3,073	1,459	1,446
Continued	14,990	13,571	5,845	9,145
Continued Claims for the Week of the 12th				
Continued	6,035	5,497	1,869	4,166

Total State of Texas Claims

	May-09	Apr-09	May-08	OTY
Initial	115,591	118,036	63,522	52,069
Continued	1,320,400	1,186,522	445,527	874,873
Continued Claims for the Week of the 12th				
Continued	292,144	280,385	109,298	182,846

Coastal Bend WDA Average Weekly Wage

	Coastal Bend	Qtr Change	Texas
4th Quarter 2008	\$781.63	74.99	\$934.10
3rd Quarter 2008	\$706.64	OTY Change	\$848.97
4th Quarter 2007	\$741.24	40.39	\$911.41

NAICS Covered Employment Quarterly Data 4th Quarter 2008

SUPER SECTOR	Employment	Change	
		Quarter	Year
Construction	19,753	671	689
Education & Health Services	34,812	378	1,119
Federal	8,410	23	374
Financial Activities	9,846	-281	-127
Information	2,651	-76	-91
Leisure & Hospitality	24,410	-1,411	-179
Local	30,022	2,472	-80
Manufacturing	12,001	-115	-333
Natural Resources & Mining	14,204	175	1,343
Nonclassified	67	-8	-34
Other Services	6,654	-32	86
Professional & Business Services	18,533	69	411
State	9,814	403	623
Trade, Transportation & Utilities	41,236	92	459
TOTAL	232,413	2,360	4,260

Size Class Employment Composition 4th Quarter 2008

