



Coastal Bend Workforce Area

Area	Area Type	Latest Monthly Data June 2010				Previous Monthly Data May 2010				Year Ago June 2009			
		Labor Force	Employment	Unemployment	Rate	Labor Force	Employment	Unemployment	Rate	Labor Force	Employment	Unemployment	Rate
U.S.	Nation	154,767,000	139,882,000	14,885,000	9.6	153,866,000	139,497,000	14,369,000	9.3	155,921,000	140,826,000	15,095,000	9.7
Texas	State	12,176,593	11,136,625	1,039,968	8.5	12,161,678	11,186,860	974,818	8.0	12,029,113	11,033,309	995,804	8.3
Corpus Christi	MSA	212,502	194,237	18,265	8.6	212,564	195,543	17,021	8.0	208,134	191,525	16,609	8.0
Coastal Bend	WDA	283,295	258,723	24,572	8.7	283,000	260,192	22,808	8.1	279,354	255,928	23,426	8.4
Aransas	County	11,847	10,885	962	8.1	11,889	10,958	931	7.8	11,594	10,733	861	7.4
Bee	County	12,140	10,918	1,222	10.1	12,090	10,976	1,114	9.2	12,128	10,872	1,256	10.4
Brooks	County	3,404	3,053	351	10.3	3,373	3,064	309	9.2	3,428	3,053	375	10.9
Duval	County	5,298	4,649	649	12.2	5,237	4,631	606	11.6	5,420	4,760	660	12.2
Jim Wells	County	22,571	20,574	1,997	8.8	22,356	20,499	1,857	8.3	22,641	20,264	2,377	10.5
Kenedy	County	241	232	9	3.7	244	236	8	3.3	248	232	16	6.5
Kleberg	County	17,333	15,996	1,337	7.7	17,448	16,246	1,202	6.9	17,361	15,998	1,363	7.9
Live Oak	County	5,158	4,756	402	7.8	5,076	4,709	367	7.2	5,331	4,899	432	8.1
McMullen	County	366	337	29	7.9	353	325	28	7.9	385	356	29	7.5
Nueces	County	168,863	155,072	13,791	8.2	168,794	156,115	12,679	7.5	165,701	152,907	12,794	7.7
Refugio	County	4,282	3,971	311	7.3	4,259	3,963	296	6.9	4,278	3,969	309	7.2
San Patricio	County	31,792	28,280	3,512	11.0	31,881	28,470	3,411	10.7	30,839	27,885	2,954	9.6

Earnings for all occupations Coastal Bend, expressed as hourly rate (TWC):

Coastal Bend - All Occupations - Average \$16.20/hr.; Entry level \$7.51/hr.; Experienced workers \$20.54/hr.; top 10% \$29.66/hr.
Texas - All Occupations - Average \$18.90/hr.; Entry level \$8.16/hr.; Experienced workers \$ 24.27/hr.; top 10% \$35.43/hr.

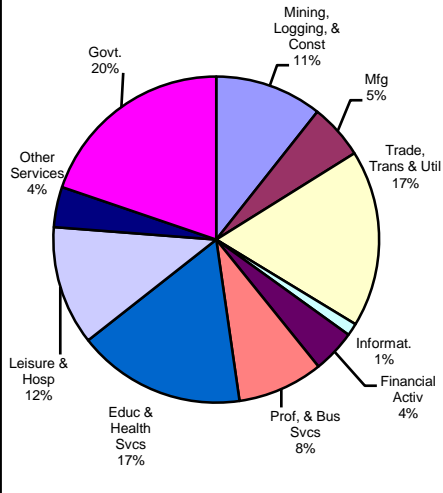
Educational Attainment for population 25 years of age and older - Corpus Christi (Census American Fact Finder / American Community Survey):

Less than 9th grade 9.9%; 9th thru 11th grade 12.0%; 12th grade and GED 27.4%; some college 23.3%; Associates degree 7.1%; Bachelors degree 13.2%; Graduate or Professional degrees 7.1%

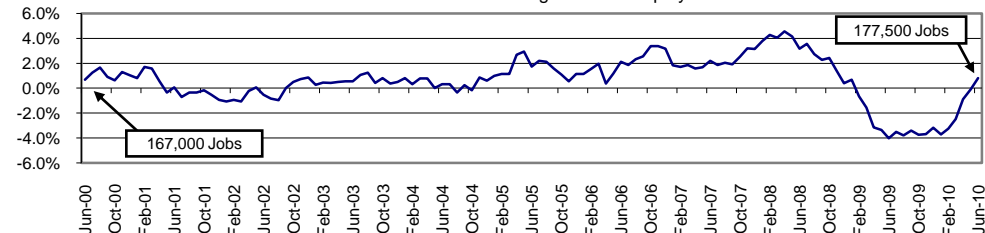
Median earnings Corpus Christi by education for persons 25 years of age & up (Census AFF / ACS): \$27,211 (\$33,893 male/ \$21,233 female)

Less than High School \$15,396 Some College or Associates \$30,595 Graduate & Professional \$53,951
High School & GED \$21,460 Bachelor's \$41,044

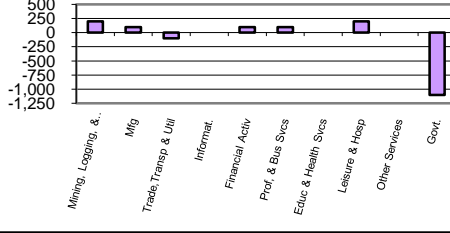
Industry Composition



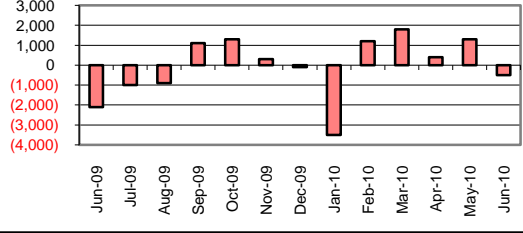
Annual Growth Rate for Total NonAgricultural Employment



Monthly Change by Industry



Monthly Change in Total Nonag Employment



Employment by Industry

				Monthly Change		Annual Change	
	Jun-2010	May-2010	Jun-2009	Actual	%	Actual	%
Total Nonagricultural	177,500	178,000	176,100	-500	-0.3%	1,400	0.8%
Mining, Logging, & Const	18,900	18,700	19,100	200	1.1%	-200	-1.1%
Manufacturing	9,700	9,600	9,900	100	1.0%	-200	-2.0%
Trade, Transp., & Utilities	31,200	31,300	31,400	-100	-0.3%	-200	-0.6%
Information	2,200	2,200	2,300	0	0.0%	-100	-4.4%
Financial Activities	7,600	7,500	7,600	100	1.3%	0	0.0%
Profes., & Business Svcs	15,100	15,000	15,100	100	0.7%	0	0.0%
Education & Health Svcs	29,600	29,600	28,600	0	0.0%	1,000	3.5%
Leisure & Hospitality	21,000	20,800	21,800	200	1.0%	-800	-3.7%
Other Services	7,100	7,100	7,100	0	0.0%	0	0.0%
Government	35,100	36,200	33,200	-1,100	-3.0%	1,900	5.7%

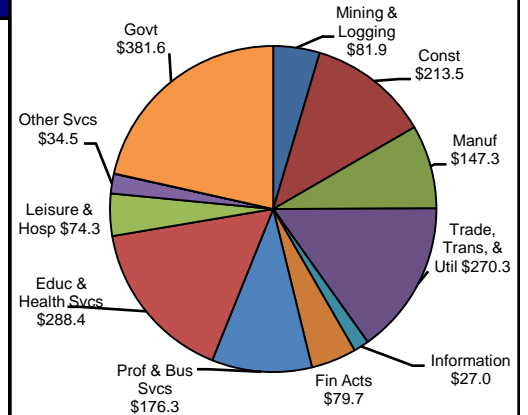
Size Class of Industries as of December 2009

Size Class	Employees Per Firm	Number of Firms	Employment in Size Class	% of Total Employment
9	1000+	19	44721	25.6%
8	500-999	23	15479	8.9%
7	250-499	45	14346	8.2%
6	100-249	181	27403	15.7%
5	50-99	275	19103	10.9%
4	20-49	722	21777	12.5%
3	10-19	1011	13655	7.8%
2	5-9	1560	10264	5.9%
1	1-4	3757	7735	4.4%
0	0	513	0	0.0%
TOTAL		8106	174483	100.0%

Comments for June 2010

Total Nonagricultural Employment in the Corpus Christi MSA lost 500 jobs over the month. June's over-the-month decrease was smaller than the five-year average decrease and was the first over-the-month decrease since January. General Merchandise Stores decreased by 100 jobs over the month. This decrease was the fourth over-the-month decrease for 2010 and the second consecutive June decrease. Some of this year's over-the-month employment decreases were offset by increases in March and May, and overall only 100 jobs were lost since the beginning of the year. Employment grew by 2.5 percent for General Merchandise Stores for the previous twelve months. The State and Local Government Sectors each lost employment for the month. Area schools and colleges were the reason for the drop as staff was cut back due to the end of the school year.

4th Quarter Wages by Industry (in millions)



Unemployment Information (all estimates are in thousands)

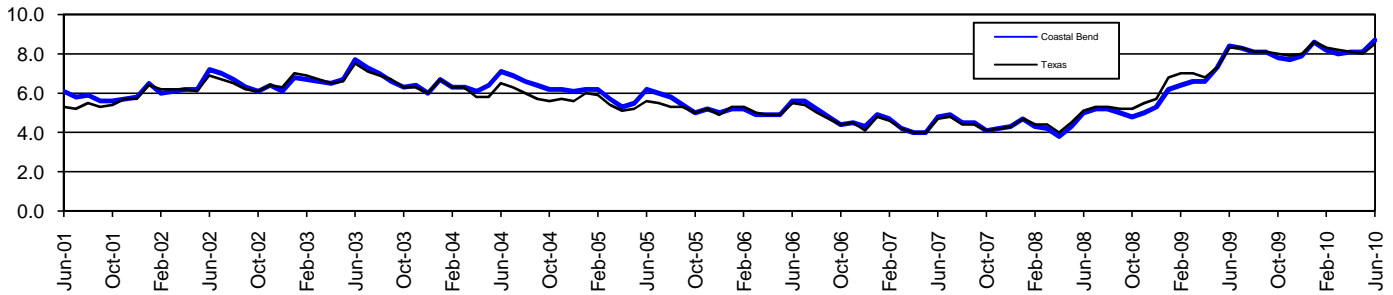
	Corpus Christi MSA				Texas (Actual)				United States (Actual)			
	C.L.F.	Emp.	Unemp.	% Rate	C.L.F.	Emp.	Unemp.	% Rate	C.L.F.	Emp.	Unemp.	% Rate
Jun-2010	212.5	194.2	18.3	8.6	12,176.6	11,136.6	1,040.0	8.5	154,767.0	139,882.0	14,885.0	9.6
May-2010	212.5	195.5	17.0	8.0	12,161.7	11,186.9	974.8	8.0	153,866.0	139,497.0	14,369.0	9.3
Jun-2009	208.1	191.5	16.6	8.0	12,029.1	11,033.3	995.8	8.3	155,921.0	140,826.0	15,095.0	9.7

Coastal Bend Workforce Development Area*

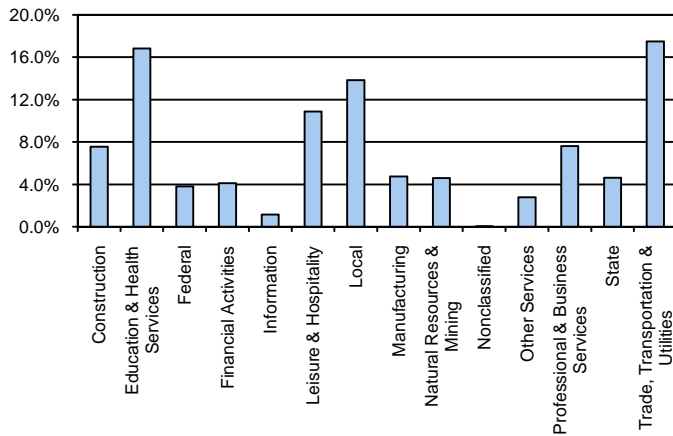
June 2010

Coastal Bend WDA					Texas				
	CLF	Employed	Unemployed	Rate		CLF	Employed	Unemployed	Rate
Jun-10	283,295	258,723	24,572	8.7	Jun-10	12,176,593	11,136,625	1,039,968	8.5
May-10	283,000	260,192	22,808	8.1	May-10	12,161,678	11,186,860	974,818	8.0
Jun-09	279,354	255,928	23,426	8.4	Jun-09	12,029,113	11,033,309	995,804	8.3

Historical Unemployment Rates



Coastal Bend WDA Industry Composition 4th Quarter 2009



Total WDA Claims

	Jun-10	May-10	Jun-09	OTY
Initial	2,462	2,395	2,944	-482
Continued	11,280	10,432	17,252	-5,972
Continued Claims for the Week of the 12th				
Continued	7,513	6,299	10,922	-3,409

Texas Unemployment Insurance Claims Filed

	Jun-10	May-10	Jun-09	OTY
Initial	103,018	88,051	120,940	-17,922
Continued	994,447	1,004,012	1,389,112	-394,665
Continued Claims for the Week of the 12th				
Continued	221,742	217,016	313,537	-91,795

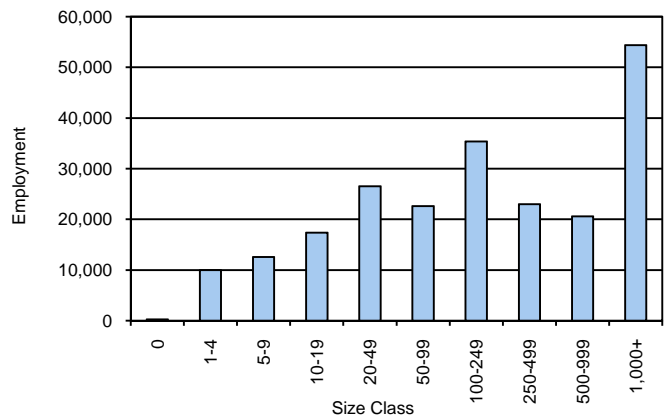
Coastal Bend WDA Average Weekly Wage

	Coastal Bend	WDA Qtr. Chg.	Texas
4th Quarter 2009	\$760.61	\$61.34	\$943.97
3rd Quarter 2009	\$699.27	WDA OTY Chg.	\$844.86
4th Quarter 2008	\$781.45	-\$20.84	\$932.81

NAICS Covered Employment Quarterly Data 4th Quarter 2009

SUPER SECTOR	Employment	Change	
		Quarter	Year
Construction	16,803	258	-3,344
Education & Health Services	37,474	1,489	2,694
Federal	8,510	-15	100
Financial Activities	9,144	-111	-709
Information	2,538	-35	-118
Leisure & Hospitality	24,237	-1,619	-223
Local	30,786	2,623	767
Manufacturing	10,535	-118	-1,466
Natural Resources & Mining	10,195	-67	-4,049
Nonclassified	76	23	29
Other Services	6,207	-108	-470
Professional & Business Services	16,967	409	-1,542
State	10,280	743	457
Trade, Transportation & Utilities	38,944	-35	-2,286
TOTAL	222,696	3,437	-10,160

Size Class Employment Composition 4th Quarter 2009



*Counties in WDA: Aransas, Bee, Brooks, Duval, Jim Wells, Kenedy, Kleberg, Live Oak, McMullen, Nueces, Refugio, & San Patricio