



Coastal Bend Workforce Area

Area	Area Type	Latest Monthly Data July 2010				Previous Monthly Data June 2010				Year Ago July 2009			
		Labor Force	Employment	Unemployment	Rate	Labor Force	Employment	Unemployment	Rate	Labor Force	Employment	Unemployment	Rate
U.S.	Nation	155,270,000	140,134,000	15,137,000	9.7	154,767,000	139,882,000	14,885,000	9.6	156,255,000	141,055,000	15,201,000	9.7
Texas	State	12,206,414	11,168,290	1,038,124	8.5	12,176,656	11,136,577	1,040,079	8.5	12,063,064	11,063,872	999,192	8.3
Corpus Christi	MSA	213,460	195,491	17,969	8.4	212,333	194,073	18,260	8.6	209,758	193,103	16,655	7.9
Coastal Bend	WDA	284,670	260,478	24,192	8.5	283,141	258,582	24,559	8.7	281,053	257,603	23,450	8.3
Aransas	County	11,913	10,955	958	8.0	11,846	10,876	970	8.2	11,682	10,821	861	7.4
Bee	County	12,234	11,011	1,223	10.0	12,143	10,922	1,221	10.1	12,174	10,923	1,251	10.3
Brooks	County	3,422	3,048	374	10.9	3,404	3,054	350	10.3	3,380	2,991	389	11.5
Duval	County	5,249	4,626	623	11.9	5,299	4,651	648	12.2	5,391	4,711	680	12.6
Jim Wells	County	22,650	20,685	1,965	8.7	22,575	20,581	1,994	8.8	22,748	20,375	2,373	10.4
Kenedy	County	248	237	11	4.4	241	232	9	3.7	252	235	17	6.7
Kleberg	County	17,620	16,331	1,289	7.3	17,337	16,001	1,336	7.7	17,483	16,159	1,324	7.6
Live Oak	County	5,159	4,765	394	7.6	5,160	4,759	401	7.8	5,284	4,859	425	8.0
McMullen	County	362	332	30	8.3	366	337	29	7.9	362	334	28	7.7
Nueces	County	169,692	156,073	13,619	8.0	168,724	154,941	13,783	8.2	166,958	154,167	12,791	7.7
Refugio	County	4,266	3,952	314	7.4	4,283	3,972	311	7.3	4,221	3,913	308	7.3
San Patricio	County	31,855	28,463	3,392	10.6	31,763	28,256	3,507	11.0	31,118	28,115	3,003	9.7

Earnings for all occupations Coastal Bend, expressed as hourly rate (TWC):

Coastal Bend - All Occupations - Average \$16.20/hr.; Entry level \$7.51/hr.; Experienced workers \$20.54/hr.; top 10% \$29.66/hr.

Texas - All Occupations - Average \$18.90/hr.; Entry level \$8.16/hr.; Experienced workers \$ 24.27/hr.; top 10% \$35.43/hr.

Educational Attainment for population 25 years of age and older - Corpus Christi (Census American Fact Finder / American Community Survey):

Less than 9th grade 9.9%; 9th thru 11th grade 12.0%; 12th grade and GED 27.4%; some college 23.3%; Associates degree 7.1%;

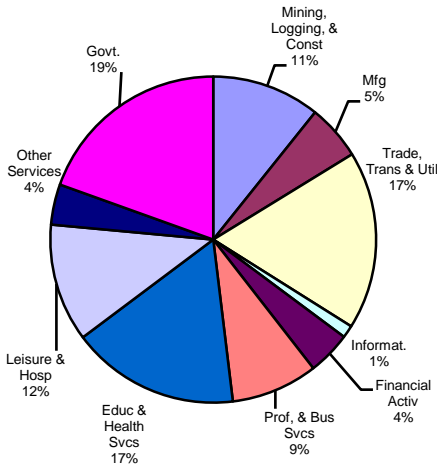
Bachelors degree 13.2%; Graduate or Professional degrees 7.1%

Median earnings Corpus Christi by education for persons 25 years of age & up (Census AFF / ACS): \$27,211 (\$33,893 male/ \$21,233 female)

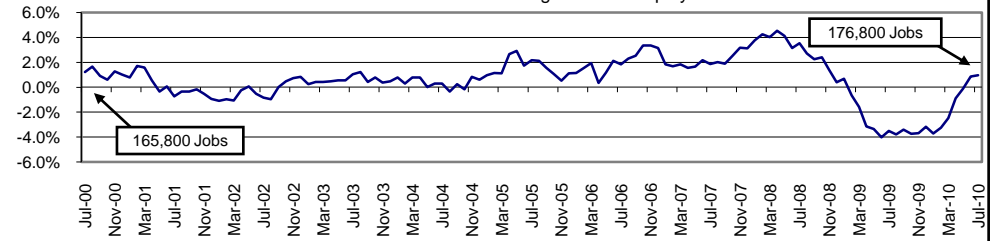
Less than High School \$15,396 Some College or Associates \$30,595 Graduate & Professional \$53,951

High School & GED \$21,460 Bachelor's \$41,044

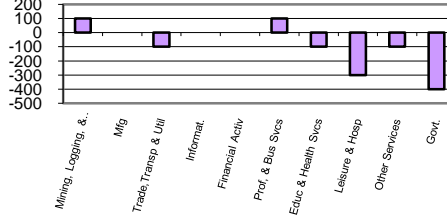
Industry Composition



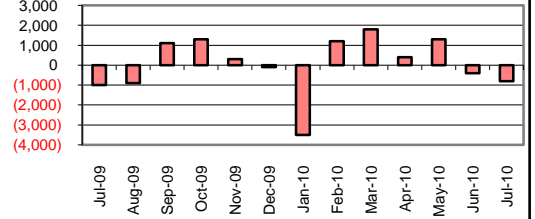
Annual Growth Rate for Total NonAgricultural Employment



Monthly Change by Industry



Monthly Change in Total Nonag Employment



Employment by Industry

				Monthly Change		Annual Change	
	Jul-2010	Jun-2010	Jul-2009	Actual	%	Actual	%
Total Nonagricultural	176,800	177,600	175,100	-800	-0.5%	1,700	1.0%
Mining, Logging, & Const	19,000	18,900	19,200	100	0.5%	-200	-1.0%
Manufacturing	9,700	9,700	9,800	0	0.0%	-100	-1.0%
Trade, Transp., & Utilities	31,300	31,400	31,200	-100	-0.3%	100	0.3%
Information	2,200	2,200	2,300	0	0.0%	-100	-4.4%
Financial Activities	7,600	7,600	7,600	0	0.0%	0	0.0%
Profes., & Business Svcs	15,200	15,100	15,000	100	0.7%	200	1.3%
Education & Health Svcs	29,500	29,600	29,000	-100	-0.3%	500	1.7%
Leisure & Hospitality	20,700	21,000	21,400	-300	-1.4%	-700	-3.3%
Other Services	7,100	7,200	7,000	-100	-1.4%	100	1.4%
Government	34,500	34,900	32,600	-400	-1.2%	1,900	5.8%

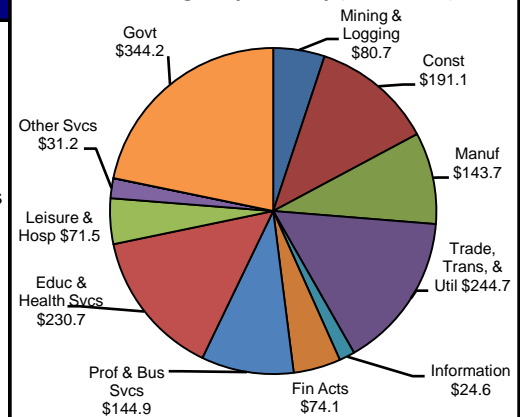
Size Class of Industries as of March 2010

Size Class	Employees Per Firm	Number of Firms	Employment in Size Class	% of Total Employment
9	1000+	19	45196	25.7%
8	500-999	20	14148	8.0%
7	250-499	47	15811	9.0%
6	100-249	175	26572	15.1%
5	50-99	282	20060	11.4%
4	20-49	739	22568	12.8%
3	10-19	1019	13812	7.9%
2	5-9	1529	10095	5.7%
1	1-4	3617	7541	4.3%
0	0	589	0	0.0%
TOTAL		8036	175803	100.0%

Comments for July 2010

Total Nonagricultural Employment in the Corpus Christi MSA lost 800 jobs over the month. July was the second consecutive month of employment decreases for the area. Since January, employment gained 3,500 jobs and over the year, the growth rate was 1.0 percent. The Construction of Buildings Industry lost 100 jobs over the month. This over-the-month decrease was the first decrease for 2010, and reversed the gains in employment posted for the previous months. The annual growth rate matched the over-the-month rate of 1.8 percent. Federal Government lost 200 jobs over the month and posted the second consecutive month of job losses for 2010 and the fourth over-the-month job loss for the previous two years. Since January, 500 jobs were added to Federal Government.

1st Quarter Wages by Industry (in millions)



Unemployment Information (all estimates are in thousands)

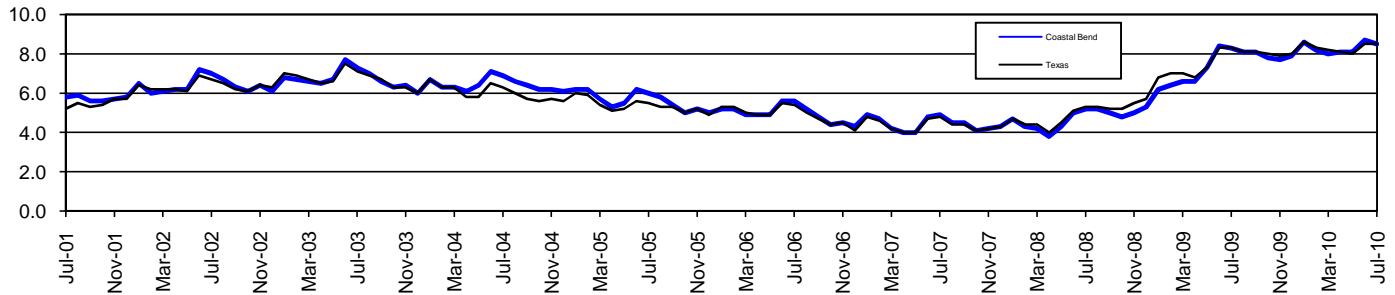
	Corpus Christi MSA				Texas (Actual)				United States (Actual)			
	C.L.F.	Emp.	Unemp.	% Rate	C.L.F.	Emp.	Unemp.	% Rate	C.L.F.	Emp.	Unemp.	% Rate
Jul-2010	213.5	195.5	18.0	8.4	12,206.4	11,168.3	1,038.1	8.5	155,270.0	140,134.0	15,137.0	9.7
Jun-2010	212.4	194.1	18.3	8.6	12,176.7	11,136.6	1,040.1	8.5	154,767.0	139,882.0	14,885.0	9.6
Jul-2009	209.8	193.1	16.7	7.9	12,063.1	11,063.9	999.2	8.3	156,255.0	141,055.0	15,201.0	9.7

Coastal Bend Workforce Development Area*

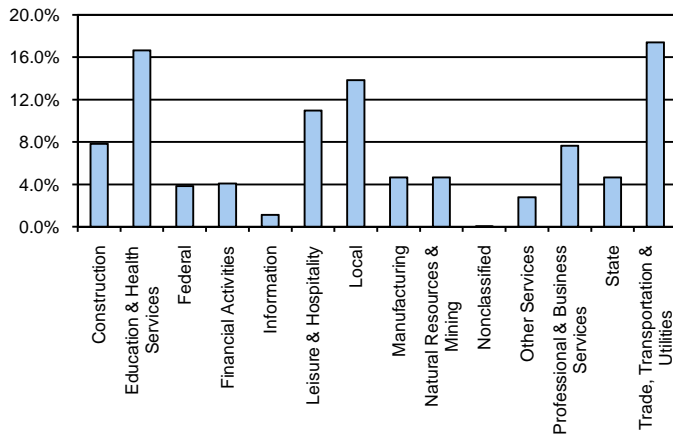
July 2010

Coastal Bend WDA					Texas				
	CLF	Employed	Unemployed	Rate		CLF	Employed	Unemployed	Rate
Jul-10	284,670	260,478	24,192	8.5	Jul-10	12,206,414	11,168,290	1,038,124	8.5
Jun-10	283,141	258,582	24,559	8.7	Jun-10	12,176,656	11,136,577	1,040,079	8.5
Jul-09	281,053	257,603	23,450	8.3	Jul-09	12,063,064	11,063,872	999,192	8.3

Historical Unemployment Rates



Coastal Bend WDA Industry Composition 1st Quarter 2010



Total WDA Claims

	Jul-10	Jun-10	Jul-09	OTY
Initial	2,227	2,462	2,467	-240
Continued	10,414	11,280	16,125	-5,711
Continued Claims for the Week of the 12th				
Continued	8,452	7,531	11,141	-2,689

Texas Unemployment Insurance Claims Filed

	Jul-10	Jun-10	Jul-09	OTY
Initial	95,154	103,018	112,737	-17,583
Continued	991,661	994,447	1,340,360	-348,699
Continued Claims for the Week of the 12th				
Continued	241,794	221,742	313,647	-71,853

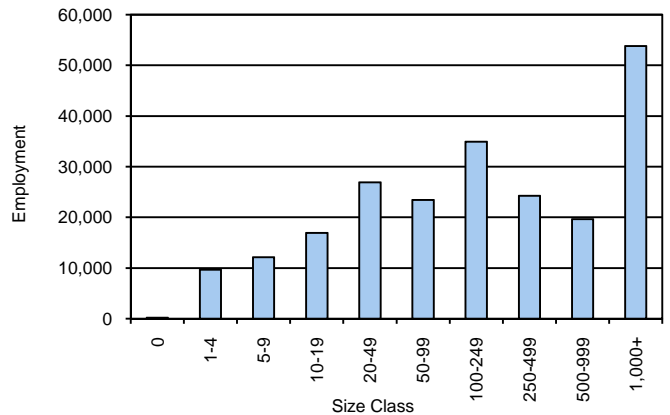
Coastal Bend WDA Average Weekly Wage

	Coastal Bend	WDA Qtr. Chg.	Texas
1st Quarter 2010	\$685.78	-\$76.24	\$893.19
4th Quarter 2009	\$762.02	WDA OTY Chg.	\$944.14
1st Quarter 2009	\$703.39	-\$17.61	\$886.34

NAICS Covered Employment Quarterly Data 1st Quarter 2010

SUPER SECTOR	Employment	Change	
		Quarter	Year
Construction	17,334	537	-1,909
Education & Health Services	36,910	-69	1,124
Federal	8,498	-10	32
Financial Activities	9,027	-167	-539
Information	2,461	-69	-154
Leisure & Hospitality	24,305	68	-268
Local	30,702	-73	251
Manufacturing	10,307	-128	-1,391
Natural Resources & Mining	10,305	132	-1,710
Nonclassified	44	14	20
Other Services	6,164	-46	-274
Professional & Business Services	16,929	-24	-675
State	10,332	-63	539
Trade, Transportation & Utilities	38,586	-365	-1,364
TOTAL	221,904	-263	-6,318

Size Class Employment Composition 1st Quarter 2010



*Counties in WDA: Aransas, Bee, Brooks, Duval, Jim Wells, Kenedy, Kleberg, Live Oak, McMullen, Nueces, Refugio, & San Patricio