



Coastal Bend Workforce Area

Area	Area Type	Latest Monthly Data July 2009				Previous Month June 2009				Year Ago July 2008			
		Labor Force	Employment	Unemployment	Rate	Labor Force	Employment	Unemployment	Rate	Labor Force	Employment	Unemployment	Rate
Texas	State	12,136,544	11,137,748	998,796	8.2	12,074,934	11,110,332	964,602	8.0	11,799,114	11,179,330	619,784	5.3
Corpus Christi	MSA	209,160	192,448	16,712	8.0	209,186	193,053	16,133	7.7	206,985	196,380	10,605	5.1
Coastal Bend	WDA	281,240	257,647	23,593	8.4	281,702	258,883	22,819	8.1	274,855	260,682	14,173	5.2
Aransas	County	11,580	10,734	846	7.3	11,586	10,768	818	7.1	11,482	10,953	529	4.6
Bee	County	11,974	10,729	1,245	10.4	12,138	10,929	1,209	10.0	11,324	10,560	764	6.7
Brooks	County	3,613	3,216	397	11.0	3,662	3,292	370	10.1	3,312	3,095	217	6.6
Duval	County	5,772	5,075	697	12.1	5,802	5,147	655	11.3	5,355	5,029	326	6.1
Jim Wells	County	23,561	21,118	2,443	10.4	23,378	20,999	2,379	10.2	21,881	20,853	1,028	4.7
Kenedy	County	250	232	18	7.2	250	235	15	6.0	236	229	7	3.0
Kleberg	County	16,805	15,489	1,316	7.8	17,019	15,708	1,311	7.7	16,130	15,348	782	4.8
Live Oak	County	5,352	4,925	427	8.0	5,451	5,033	418	7.7	5,125	4,880	245	4.8
McMullen	County	355	326	29	8.2	382	352	30	7.9	348	326	22	6.3
Nueces	County	166,407	153,576	12,831	7.7	166,482	154,058	12,424	7.5	164,948	156,713	8,235	5.0
Refugio	County	4,397	4,088	309	7.0	4,434	4,135	299	6.7	4,159	3,983	176	4.2
San Patricio	County	31,174	28,139	3,035	9.7	31,118	28,227	2,891	9.3	30,555	28,713	1,842	6.0

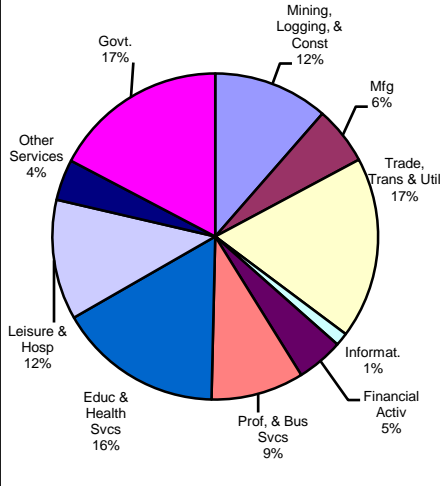
Earnings for all occupations Coastal Bend, expressed as hourly rate (TWC):

Coastal Bend - All Occupations - Average \$16.20/hr.; Entry level \$7.51/hr.; Experienced workers \$20.54/hr.; top 10% \$29.66/hr.
Texas - All Occupations - Average \$18.90/hr.; Entry level \$8.16/hr.; Experienced workers \$ 24.27/hr.; top 10% \$35.43/hr.

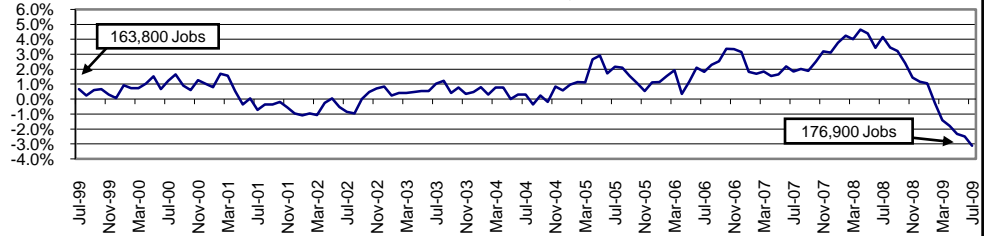
Educational Attainment for population 25 years of age and older - Corpus Christi (Census American Fact Finder / American Community Survey):
Less than 9th grade 9.9%; 9th thru 11th grade 12.0%; 12th grade and GED 27.4%; some college 23.3%; Associates degree 7.1%; Bachelors degree 13.2%; Graduate or Professional degrees 7.1%

Median earnings Corpus Christi by education for persons 25 years of age & up (Census AFF / ACS): \$27,211 (\$33,893 male/ \$21,233 female)
Less than High School \$15,396 Some College or Associates \$30,595 Graduate & Professional \$53,951
High School & GED \$21,460 Bachelor's \$41,044

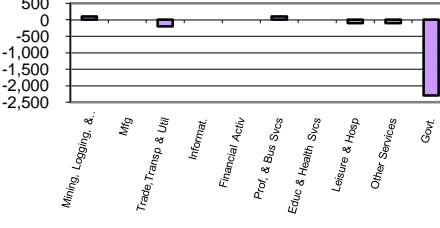
Industry Composition



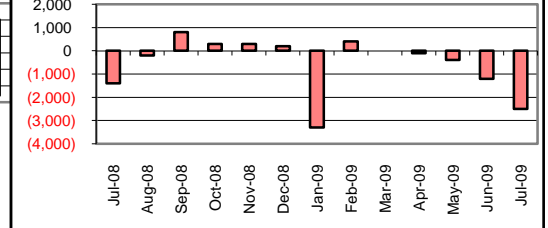
Annual Growth Rate for Total NonAgricultural Employment



Monthly Change by Industry



Monthly Change in Total Nonag Employment



Employment by Industry

	Employment			Monthly Change		Annual Change	
	Jul-2009	Jun-2009	Jul-2008	Actual	%	Actual	%
Total Nonagricultural	176,900	179,400	182,600	-2,500	-1.4%	-5,700	-3.1%
Mining, Logging, & Const	20,200	20,100	22,400	100	0.5%	-2,200	-9.8%
Manufacturing	10,200	10,200	11,100	0	0.0%	-900	-8.1%
Trade, Transp., & Utilities	31,900	32,100	32,900	-200	-0.6%	-1,000	-3.0%
Information	2,300	2,300	2,500	0	0.0%	-200	-8.0%
Financial Activities	8,200	8,200	8,300	0	0.0%	-100	-1.2%
Profes., & Business Svcs	16,300	16,200	16,900	100	0.6%	-600	-3.6%
Education & Health Svcs	28,900	28,900	28,100	0	0.0%	800	2.9%
Leisure & Hospitality	21,100	21,200	21,500	-100	-0.5%	-400	-1.9%
Other Services	7,200	7,300	7,200	-100	-1.4%	0	0.0%
Government	30,600	32,900	31,700	-2,300	-7.0%	-1,100	-3.5%

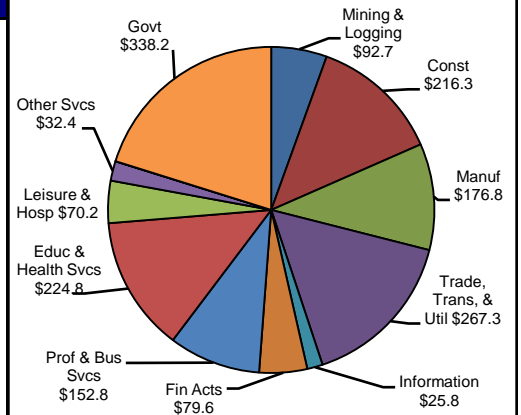
Size Class of Industries as of March 2009

Size Class	Employees Per Firm	Number of Firms	Employment in Size Class	% of Total Employment
9	1000+	20	45853	25.8%
8	500-999	21	14078	7.9%
7	250-499	43	14713	8.3%
6	100-249	188	28546	16.1%
5	50-99	283	19762	11.1%
4	20-49	745	22698	12.8%
3	10-19	1027	13977	7.9%
2	5-9	1535	10200	5.7%
1	1-4	3703	7846	4.4%
0	0	602	0	0.0%
TOTAL		8167	177673	100.0%

Comments for July 2009

The Corpus Christi MSA decreased by 2,500 jobs over the month in Total Nonagricultural Employment. The decrease was mainly brought about by seasonal declines in the local school districts. July's over-the-month decrease was the fourth consecutive decrease for the area and the fifth over-the-month employment drop for the year. Since last July, the MSA had a -3.1 percent growth rate. The Construction of Buildings industry added 100 jobs over the month. The employment growth was the first increase since October 2008, when the area added 200 jobs. This industry is down 400 jobs since January 2009. Local Government lost 2,400 jobs over the month as area colleges and school districts shed jobs for the summer break. The July reduction in staff was in line with historical job declines for summer and was the second consecutive month of employment decreases.

1st Quarter Wages by Industry (in millions)



Unemployment Information (all estimates are in thousands)

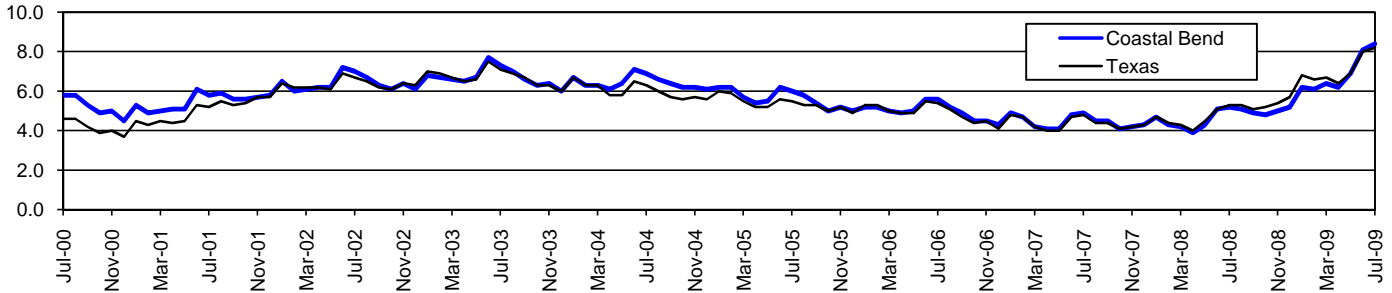
	Corpus Christi MSA				Texas (Actual)				United States (Actual)			
	C.L.F.	Emp.	Unemp.	% Rate	C.L.F.	Emp.	Unemp.	% Rate	C.L.F.	Emp.	Unemp.	% Rate
Jul-2009	209.1	192.4	16.7	8.0	12,136.5	11,137.7	998.8	8.2	156,255.0	141,055.0	15,201.0	9.7
Jun-2009	209.2	193.1	16.1	7.7	12,074.9	11,110.3	964.6	8.0	155,921.0	140,826.0	15,095.0	9.7
Jul-2008	207.0	196.4	10.6	5.1	11,799.1	11,179.3	619.8	5.3	156,300.0	146,867.0	9,433.0	6.0

Coastal Bend Workforce Development Area

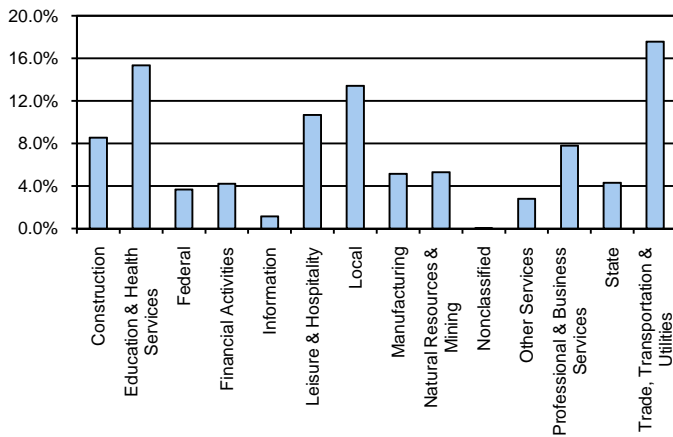
July 2009

Coastal Bend WDA					Texas				
	CLF	Employed	Unemployed	Rate		CLF	Employed	Unemployed	Rate
Jul-09	281,240	257,647	23,593	8.4	Jul-09	12,136,544	11,137,748	998,796	8.2
Jun-09	281,702	258,883	22,819	8.1	Jun-09	12,074,934	11,110,332	964,602	8.0
Jul-08	274,855	260,682	14,173	5.2	Jul-08	11,799,114	11,179,330	619,784	5.3

Historical Unemployment Rates



Coastal Bend WDA Industry Composition 1st Quarter 2009



Total WDA Claims

	Jul-09	Jun-09	Jul-08	OTY
Initial	2,467	2,944	1,417	1,050
Continued	16,125	17,252	8,056	8,069
Continued Claims for the Week of the 12th				
Continued	6,392	6,560	2,302	4,090

Texas Unemployment Insurance Claims Filed

	Jul-09	Jun-09	Jul-08	OTY
Initial	112,737	120,940	73,030	39,707
Continued	1,340,360	1,389,112	559,164	781,196
Continued Claims for the Week of the 12th				
Continued	313,647	297,829	120,095	193,552

Coastal Bend WDA Average Weekly Wage

	Coastal Bend	Qtr Change	Texas
1st Quarter 2009	\$706.39	-75.06	\$884.74
4th Quarter 2008	\$781.45	OTY Change	\$932.81
1st Quarter 2008	\$724.53	-18.14	\$903.44

NAICS Covered Employment Quarterly Data 1st Quarter 2009

SUPER SECTOR	Employment	Change	
		Quarter	Year
Construction	19,364	-783	-28
Education & Health Services	34,854	74	1,213
Federal	8,341	-69	292
Financial Activities	9,583	-270	-453
Information	2,622	-34	-137
Leisure & Hospitality	24,241	-219	-1
Local	30,453	434	401
Manufacturing	11,692	-309	-711
Natural Resources & Mining	12,048	-2,196	-666
Nonclassified	70	23	-9
Other Services	6,384	-293	-170
Professional & Business Services	17,707	-802	-1,004
State	9,793	-30	717
Trade, Transportation & Utilities	39,913	-1,317	-952
TOTAL	227,065	-5,791	-1,508

Size Class Employment Composition 1st Quarter 2009

