



Coastal Bend Workforce Area

Area	Area Type	Latest Monthly Data August 2010				Previous Monthly Data July 2010				Year Ago August 2009			
		Labor Force	Employment	Unemployment	Rate	Labor Force	Employment	Unemployment	Rate	Labor Force	Employment	Unemployment	Rate
U.S.	Nation	154,678,000	139,919,000	14,759,000	9.5	155,270,000	140,134,000	15,137,000	9.7	154,897,000	140,074,000	14,823,000	9.6
Texas	State	12,190,876	11,169,134	1,021,742	8.4	12,206,240	11,168,444	1,037,796	8.5	11,996,356	11,021,654	974,702	8.1
Corpus Christi	MSA	212,526	194,896	17,630	8.3	211,857	193,897	17,960	8.5	207,505	191,562	15,943	7.7
Coastal Bend	WDA	283,516	259,838	23,678	8.4	283,000	258,830	24,170	8.5	278,722	256,174	22,548	8.1
Aransas	County	11,910	10,922	988	8.3	11,823	10,866	957	8.1	11,548	10,735	813	7.0
Bee	County	12,119	10,924	1,195	9.9	12,224	11,003	1,221	10.0	12,043	10,848	1,195	9.9
Brooks	County	3,409	3,054	355	10.4	3,422	3,049	373	10.9	3,411	3,037	374	11.0
Duval	County	5,226	4,618	608	11.6	5,247	4,623	624	11.9	5,384	4,712	672	12.5
Jim Wells	County	22,537	20,611	1,926	8.5	22,625	20,665	1,960	8.7	22,681	20,347	2,334	10.3
Kenedy	County	251	240	11	4.4	248	237	11	4.4	255	237	18	7.1
Kleberg	County	17,763	16,501	1,262	7.1	17,599	16,314	1,285	7.3	17,638	16,341	1,297	7.4
Live Oak	County	5,075	4,707	368	7.3	5,153	4,760	393	7.6	5,239	4,845	394	7.5
McMullen	County	348	323	25	7.2	362	332	30	8.3	361	336	25	6.9
Nueces	County	169,023	155,598	13,425	7.9	168,406	154,801	13,605	8.1	165,159	152,936	12,223	7.4
Refugio	County	4,262	3,964	298	7.0	4,262	3,949	313	7.3	4,205	3,909	296	7.0
San Patricio	County	31,593	28,376	3,217	10.2	31,629	28,231	3,398	10.7	30,798	27,891	2,907	9.4

Earnings for all occupations Coastal Bend, expressed as hourly rate (TWC):

Coastal Bend - All Occupations - Average \$16.20/hr.; Entry level \$7.51/hr.; Experienced workers \$20.54/hr.; top 10% \$29.66/hr.

Texas - All Occupations - Average \$18.90/hr.; Entry level \$8.16/hr.; Experienced workers \$ 24.27/hr.; top 10% \$35.43/hr.

Educational Attainment for population 25 years of age and older - Corpus Christi (Census American Fact Finder / American Community Survey):

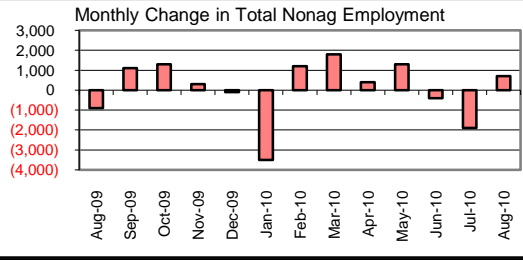
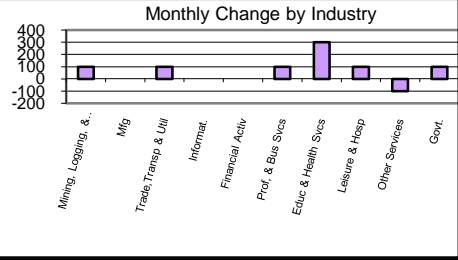
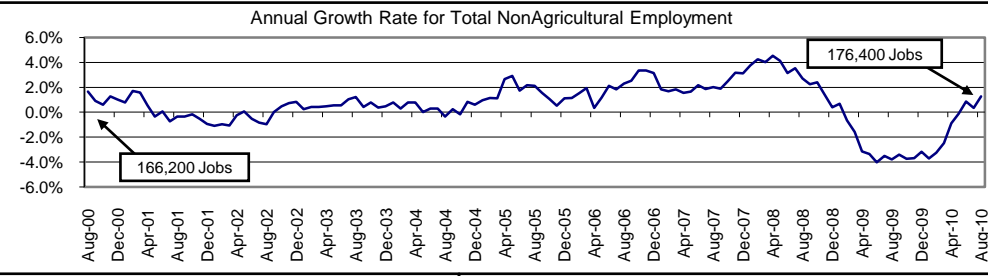
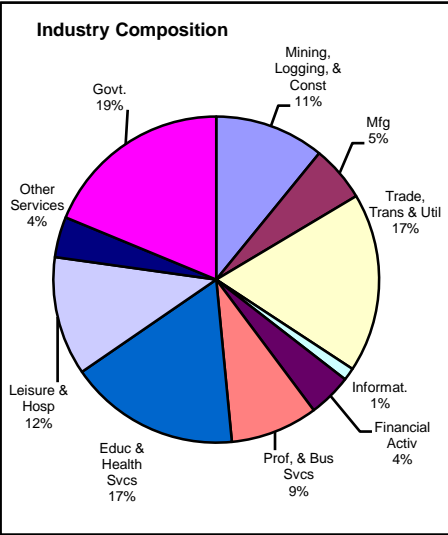
Less than 9th grade 9.9%; 9th thru 11th grade 12.0%; 12th grade and GED 27.4%; some college 23.3%; Associates degree 7.1%;

Bachelors degree 13.2%; Graduate or Professional degrees 7.1%

Median earnings Corpus Christi by education for persons 25 years of age & up (Census AFF / ACS): \$27,211 (\$33,893 male/ \$21,233 female)

Less than High School \$15,396 Some College or Associates \$30,595 Graduate & Professional \$53,951

High School & GED \$21,460 Bachelor's \$41,044

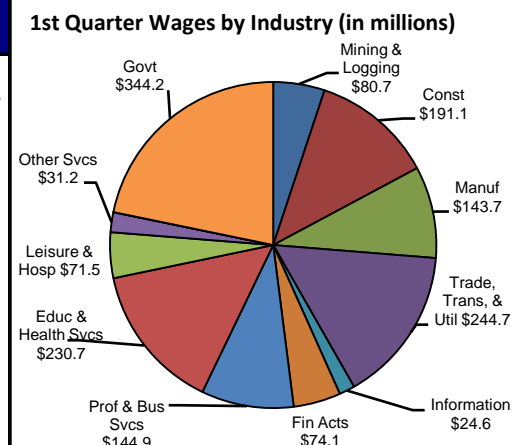


Industry	Employment			Monthly Change		Annual Change	
	Aug-2010	Jul-2010	Aug-2009	Actual	%	Actual	%
Total Nonagricultural	176,400	175,700	174,200	700	0.4%	2,200	1.3%
Mining, Logging, & Const	19,200	19,100	18,600	100	0.5%	600	3.2%
Manufacturing	9,800	9,800	9,700	0	0.0%	100	1.0%
Trade, Transp., & Utilities	31,400	31,300	31,400	100	0.3%	0	0.0%
Information	2,200	2,200	2,300	0	0.0%	-100	-4.4%
Financial Activities	7,600	7,600	7,600	0	0.0%	0	0.0%
Profes., & Business Svcs	15,300	15,200	15,000	100	0.7%	300	2.0%
Education & Health Svcs	29,900	29,600	29,000	300	1.0%	900	3.1%
Leisure & Hospitality	20,800	20,700	21,600	100	0.5%	-800	-3.7%
Other Services	7,100	7,200	7,100	-100	-1.4%	0	0.0%
Government	33,100	33,000	31,900	100	0.3%	1,200	3.8%

Size Class	Employees Per Firm	Number of Firms	Employment in Size Class	% of Total Employment
9	1000+	19	45196	25.7%
8	500-999	20	14148	8.0%
7	250-499	47	15811	9.0%
6	100-249	175	26572	15.1%
5	50-99	282	20060	11.4%
4	20-49	739	22568	12.8%
3	10-19	1019	13812	7.9%
2	5-9	1529	10095	5.7%
1	1-4	3617	7541	4.3%
0	0	589	0	0.0%
TOTAL		8036	175803	100.0%

Comments for August 2010

The Corpus Christi MSA added 700 jobs in Total Nonagricultural Employment over the month. This was the first August over-the-month increase since August 2007. This month's increase was also the first over-the-month increase since May 2010. Since January, 3,100 jobs were added to employment. The largest over-the-month employment increase happened in the Local Government Sector as some area schools added back staff for the new school year. The State Government Sector had a seasonal decrease of 400 jobs.



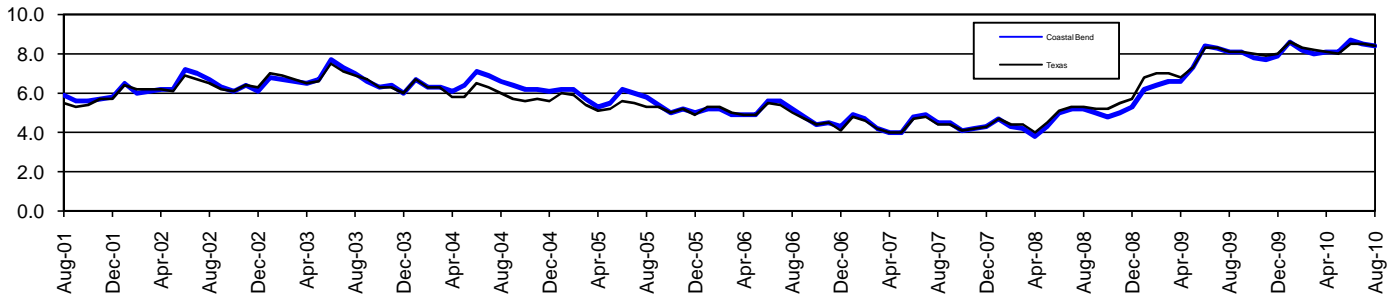
	Corpus Christi MSA				Texas (Actual)				United States (Actual)			
	C.L.F.	Emp.	Unemp.	% Rate	C.L.F.	Emp.	Unemp.	% Rate	C.L.F.	Emp.	Unemp.	% Rate
Aug-2010	212.5	194.9	17.6	8.3	12,190.8	11,169.1	1,021.7	8.4	154,678.0	139,919.0	14,759.0	9.5
Jul-2010	211.9	193.9	18.0	8.5	12,206.2	11,168.4	1,037.8	8.5	155,270.0	140,134.0	15,137.0	9.7
Aug-2009	207.5	191.6	15.9	7.7	11,996.4	11,021.7	974.7	8.1	154,897.0	140,074.0	14,823.0	9.6

Coastal Bend Workforce Development Area*

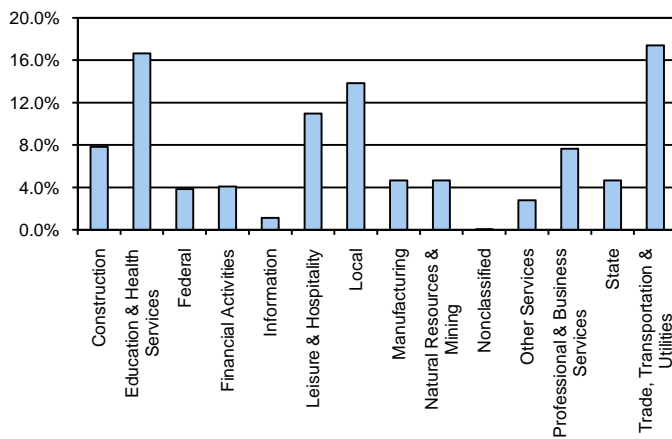
August 2010

Coastal Bend WDA					Texas				
	CLF	Employed	Unemployed	Rate		CLF	Employed	Unemployed	Rate
Aug-10	283,516	259,838	23,678	8.4	Aug-10	12,190,876	11,169,134	1,021,742	8.4
Jul-10	283,000	258,830	24,170	8.5	Jul-10	12,206,240	11,168,444	1,037,796	8.5
Aug-09	278,722	256,174	22,548	8.1	Aug-09	11,996,356	11,021,654	974,702	8.1

Historical Unemployment Rates



Coastal Bend WDA Industry Composition 1st Quarter 2010



Total WDA Claims

	Aug-10	Jul-10	Aug-09	OTY
Initial	2,265	2,227	2,215	50
Continued	10,382	10,414	15,643	-5,261
Continued Claims for the Week of the 12th				
Continued	7,418	8,473	10,344	-2,926

Texas Unemployment Insurance Claims Filed

	Aug-10	Jul-10	Aug-09	OTY
Initial	91,613	95,154	98,542	-6,929
Continued	1,064,768	991,661	1,404,113	-339,345
Continued Claims for the Week of the 12th				
Continued	218,763	241,794	295,488	-76,725

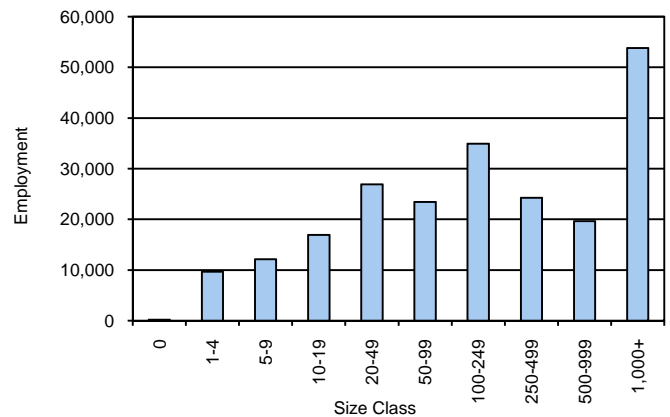
Coastal Bend WDA Average Weekly Wage

	Coastal Bend	WDA Qtr. Chg.	Texas
1st Quarter 2010	\$685.78	-\$76.24	\$893.19
4th Quarter 2009	\$762.02	WDA OTY Chg.	\$944.14
1st Quarter 2009	\$703.39	-\$17.61	\$886.34

NAICS Covered Employment Quarterly Data 1st Quarter 2010

SUPER SECTOR	Employment	Change	
		Quarter	Year
Construction	17,334	537	-1,909
Education & Health Services	36,910	-69	1,124
Federal	8,498	-10	32
Financial Activities	9,027	-167	-539
Information	2,461	-69	-154
Leisure & Hospitality	24,305	68	-268
Local	30,702	-73	251
Manufacturing	10,307	-128	-1,391
Natural Resources & Mining	10,305	132	-1,710
Nonclassified	44	14	20
Other Services	6,164	-46	-274
Professional & Business Services	16,929	-24	-675
State	10,332	-63	539
Trade, Transportation & Utilities	38,586	-365	-1,364
TOTAL	221,904	-263	-6,318

Size Class Employment Composition 1st Quarter 2010



*Counties in WDA: Aransas, Bee, Brooks, Duval, Jim Wells, Kenedy, Kleberg, Live Oak, McMullen, Nueces, Refugio, & San Patricio

Available at <http://www.tracer2.com/>