

# Coastal Bend Workforce Area

(Not Seasonally Adjusted Unemployment Rates by WDA, MSA, & County)

Area	Area Type	Latest Monthly Data July 2016						Previous Monthly Data June 2016				Year Ago July 2015			
		Labor Force	Employment	Unemployment	Rate	M+-	Y+-	Labor Force	Employment	Unemployment	Rate	Labor Force	Employment	Unemployment	Rate
United States	Nation	159,287,000	151,517,000	7,770,000	4.9	0.0	-0.4	158,880,000	151,097,000	7,783,000	4.9	157,115,000	148,866,000	8,249,000	5.3
Texas	State	13,291,512	12,682,353	609,159	4.6	0.1	0.2	13,299,225	12,705,966	593,259	4.5	13,055,864	12,480,999	574,865	4.4
Corpus Christi	MSA	212,689	199,473	13,216	6.2	0.2	0.7	212,510	199,790	12,720	6.0	207,567	196,181	11,386	5.5
Coastal Bend	WDA	272,354	253,538	18,816	6.9	0.2	0.9	273,138	254,908	18,230	6.7	269,188	253,039	16,149	6.0
Aransas	County	10,279	9,674	605	5.9	0.4	0.6	10,302	9,735	567	5.5	10,084	9,550	534	5.3
Bee	County	10,400	9,509	891	8.6	0.3	1.4	10,634	9,756	878	8.3	10,381	9,631	750	7.2
Brooks	County	2,482	2,153	329	13.3	0.3	1.8	2,513	2,187	326	13.0	2,600	2,300	300	11.5
Duval	County	4,882	4,295	587	12.0	0.1	2.8	5,013	4,414	599	11.9	5,149	4,674	475	9.2
Jim Wells	County	18,084	15,987	2,097	11.6	0.3	2.4	18,272	16,214	2,058	11.3	19,192	17,433	1,759	9.2
Kenedy	County	211	200	11	5.2	0.6	2.1	241	230	11	4.6	256	248	8	3.1
Kleberg	County	13,762	12,665	1,097	8.0	0.3	0.9	14,054	12,975	1,079	7.7	14,021	13,031	990	7.1
Live Oak	County	5,798	5,471	327	5.6	0.2	1.0	5,805	5,491	314	5.4	5,774	5,510	264	4.6
McMullen	County	928	904	24	2.6	0.4	0.4	916	896	20	2.2	965	944	21	2.2
Nueces	County	171,147	160,959	10,188	6.0	0.3	0.7	170,875	161,119	9,756	5.7	166,978	158,184	8,794	5.3
Refugio	County	3,118	2,881	237	7.6	0.5	1.6	3,180	2,955	225	7.1	3,283	3,087	196	6.0
San Patricio	County	31,263	28,840	2,423	7.8	0.1	1.1	31,333	28,936	2,397	7.7	30,505	28,447	2,058	6.7

(M+-) Change in unemployment rate from last month (Increase) (Decrease)

(Y+-) Change in unemployment rate from last year (Increase) (Decrease)

- Earnings for all occupations Coastal Bend, expressed as hourly rate (TWC):

<b>Coastal Bend</b>	<b>All Occupations-</b>	<b>Average \$18.35/hr.</b>	<b>Entry level \$8.58/hr.</b>	<b>Experienced workers \$23.24/hr.</b>	<b>Top 10% \$33.56/hr.</b>
<b>Texas</b>	<b>All Occupations-</b>	<b>Average \$20.97/hr.</b>	<b>Entry level \$8.88/hr.</b>	<b>Experienced workers \$ 27.02/hr.</b>	<b>Top 10% \$39.64/hr.</b>

- Educational Attainment for population 25 years of age and older - Corpus Christi (Census American Fact Finder/American Community Survey):

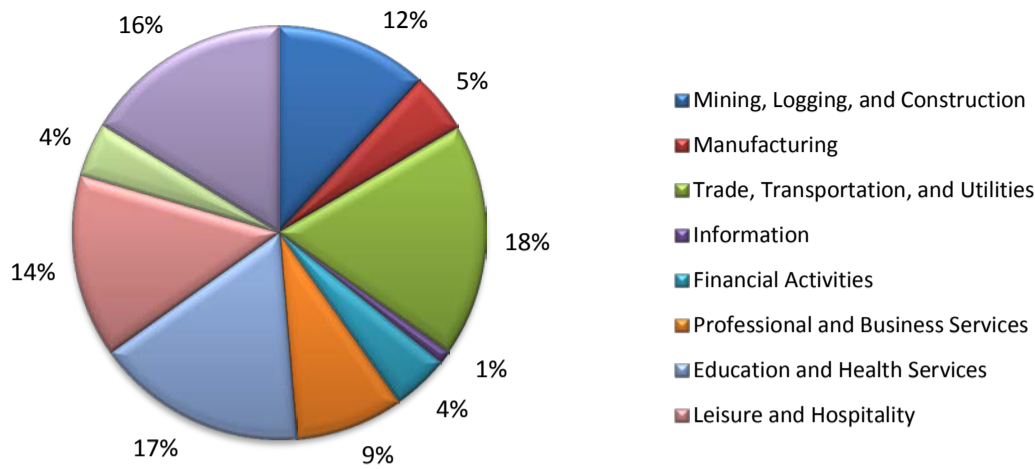
<b>Less than 9<sup>th</sup> grade</b>	<b>8.7%</b>	<b>12<sup>th</sup> grade &amp; GED</b>	<b>27.7%</b>	<b>Associates degree</b>	<b>7.0%</b>	<b>Graduate or Professional degrees</b>	<b>8.4%</b>
<b>9<sup>th</sup> thru 11<sup>th</sup> grade</b>	<b>9.3%</b>	<b>Some College</b>	<b>25.1%</b>	<b>Bachelors degree</b>	<b>13.8%</b>		

- Median earnings Corpus Christi by education for persons 25 years of age & up (Census AFF/ACS): **\$27,211** (\$36,380 male/ \$22,328 female)

<b>Less than High School</b>	<b>\$15,437</b>	<b>Some College or Associates</b>	<b>\$28,739</b>	<b>Graduate or Professional</b>	<b>\$56,681</b>
<b>High School &amp; GED</b>	<b>\$26,818</b>	<b>Bachelor's</b>	<b>\$44,078</b>		

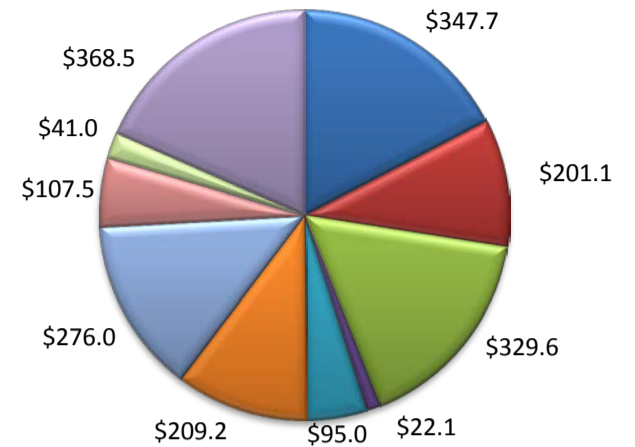
(Aransas, Nueces, San Patricio)

Industry Composition



Wages by Industry (in millions)

1st Quarter 2016



Employment by Industry

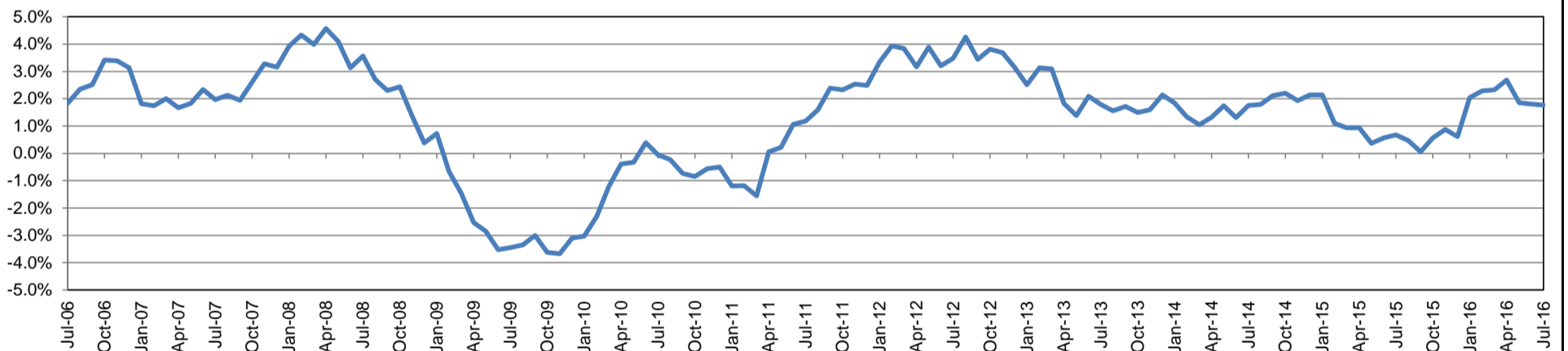
	Jul-16	Jun-16	Jul-15	Monthly Change		Annual Change	
				Actual	%	Actual	%
Total Nonfarm	196,000	197,700	192,600	-1,700	-0.9%	3,400	1.8%
Mining, Logging, and Construction	23,200	23,100	23,700	100	0.4%	-500	-2.1%
Manufacturing	9,200	9,100	9,500	100	1.1%	-300	-3.2%
Trade, Transportation, and Utilities	35,700	36,200	35,700	-500	-1.4%	0	0.0%
Information	2,000	2,000	2,100	0	0.0%	-100	-4.8%
Financial Activities	8,700	8,700	8,400	0	0.0%	300	3.6%
Professional and Business Services	16,600	16,900	16,900	-300	-1.8%	-300	-1.8%
Education and Health Services	32,300	31,500	29,700	800	2.5%	2,600	8.8%
Leisure and Hospitality	28,100	28,400	26,900	-300	-1.1%	1,200	4.5%
Other Services	8,300	8,300	8,200	0	0.0%	100	1.2%
Government	31,900	33,500	31,500	-1,600	-4.8%	400	1.3%

Industry Size Class

March 2016

Size Class	Employees per firm	Number of Firms	Employment in Size Class	% Total Employment
9	1000+	18	41,172	22.5%
8	500-999	19	13,332	7.3%
7	250-499	46	16,198	8.9%
6	100-249	225	34,027	18.6%
5	50-99	309	21,121	11.5%
4	20-49	837	25,482	13.9%
3	10-19	1,054	14,441	7.9%
2	5-9	1,508	9,989	5.5%
1	1-4	3,442	7,151	3.9%
0	0	641	0	0.0%
Total		8,099	182,913	100.0%

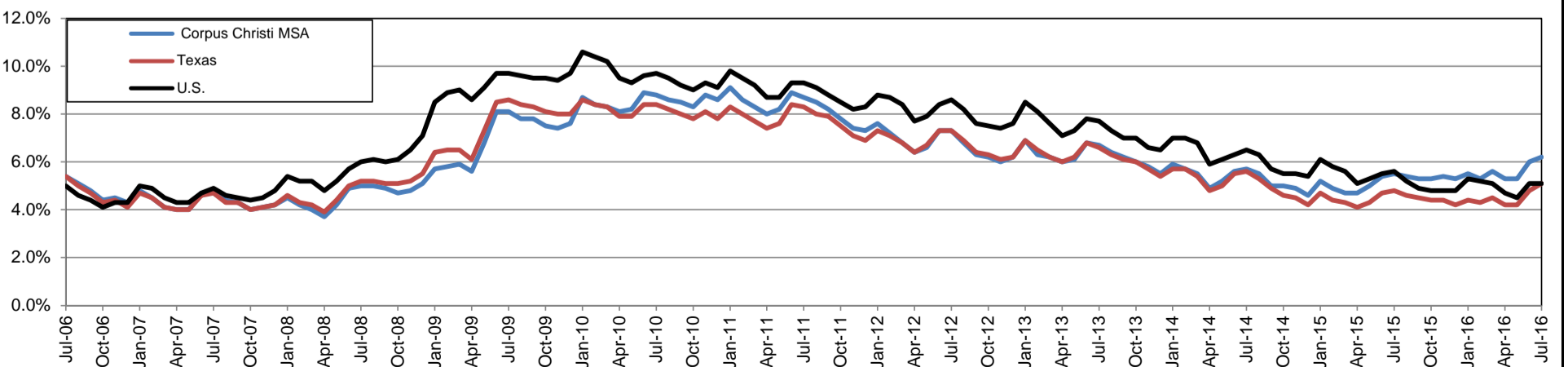
Annual Growth Rate for Total Nonagricultural Employment



Unemployment Information (all estimates in thousands)

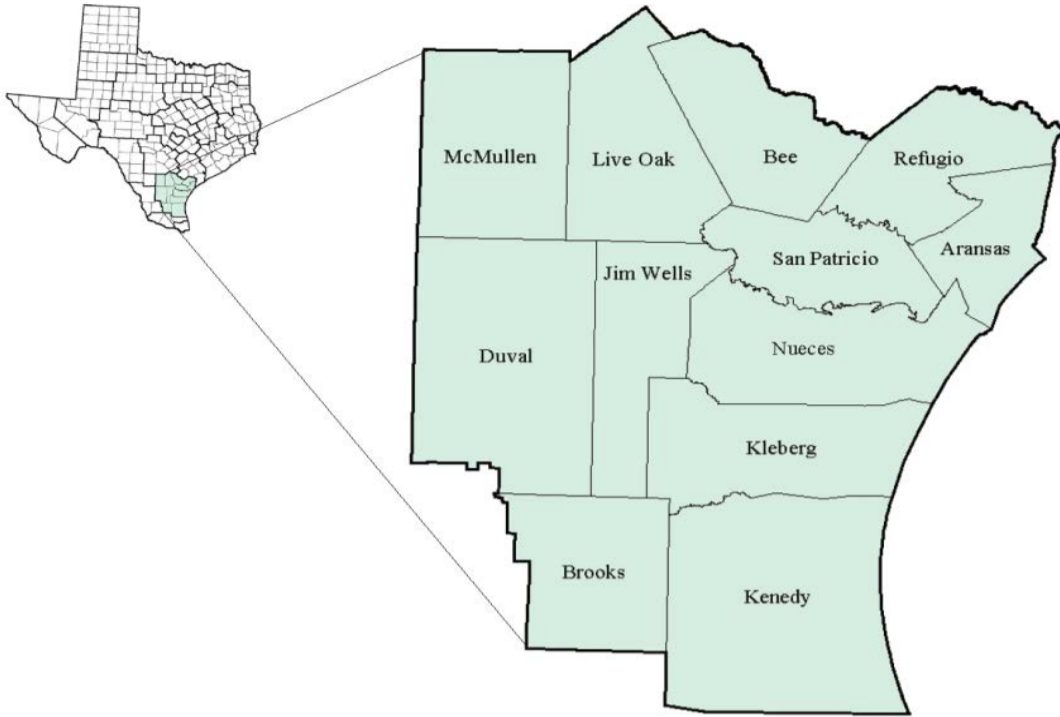
	Corpus Christi MSA				Texas (Actual)				United States (Actual)			
	C.L.F.	Emp.	Unemp.	Rate	C.L.F.	Emp.	Unemp.	Rate	C.L.F.	Emp.	Unemp.	Rate
Jul-16	212.7	199.5	13.2	6.2	13,386.7	12,707.0	679.8	5.1	160,705.0	152,437.0	8,267.0	5.1
Jun-16	212.5	199.8	12.7	6.0	13,338.5	12,694.0	644.4	4.8	160,135.0	151,990.0	8,144.0	5.1
Jul-15	207.6	196.2	11.4	5.5	13,120.5	12,487.2	633.2	4.8	158,527.0	149,722.0	8,805.0	5.6

Historical Unemployment Rates



# Coastal Bend Workforce Development Area

July 2016



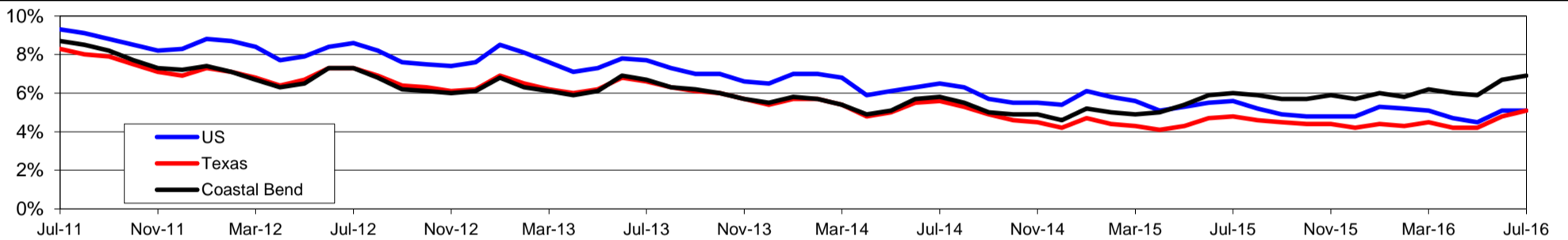
WDA Labor Force Statistics				
	Jul-16	Jun-16	Jul-15	OTY
CLF	272,354	273,138	269,188	3,166
Employed	253,538	254,908	253,039	499
Unemployed	18,816	18,230	16,149	2,667
Rate	6.9%	6.7%	6.0%	0.9%

Texas Labor Force Statistics				
	Jul-16	Jun-16	Jul-15	OTY
CLF	13,386,738	13,338,466	13,120,456	266,282
Employed	12,706,976	12,694,041	12,487,238	219,738
Unemployed	679,762	644,425	633,218	46,544
Rate	5.1%	4.8%	4.8%	0.3%

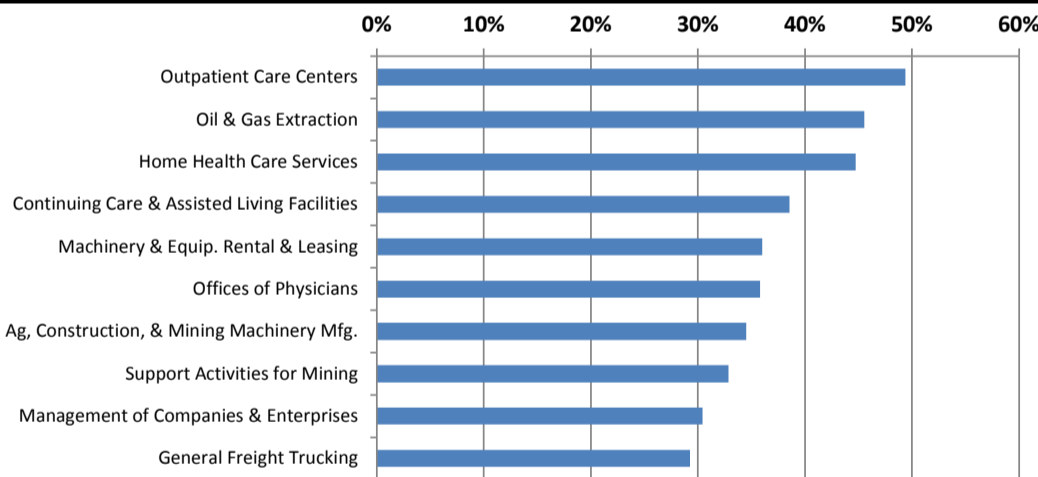
US Labor Force Statistics				
	Jul-16	Jun-16	Jul-15	OTY
CLF	160,705,000	160,135,000	158,527,000	2,178,000
Employed	152,437,000	151,990,000	149,722,000	2,715,000
Unemployed	8,267,000	8,144,000	8,805,000	-538,000
Rate	5.1%	5.1%	5.6%	-0.5%

Continued Claims for the Week of the 12th				
	Jul-16	Jun-16	Jul-15	OTY
WDA	5,023	5,312	4,789	234
Texas	156,380	157,420	148,988	7,392

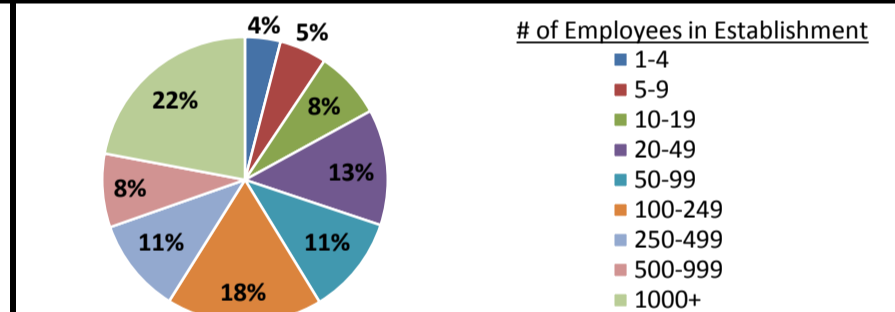
## Historical Unemployment Rates



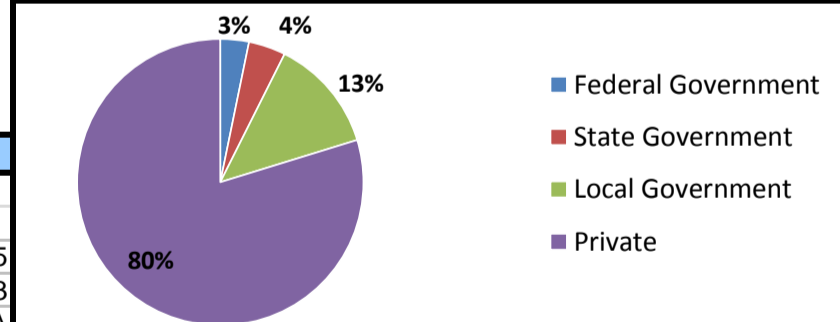
## Projected Fastest Growing Industries in WDA (% growth 2012-2022)



## Employment by Size Class (1st Quarter 2016)



## Employment by Ownership (1st Quarter 2016)



## Average Weekly Wage (1st Quarter 2016)

	Q1 2016	Q4 2015	Q1 2015	Change	
				Quarter	Year
WDA	\$822	\$897	\$867	-\$75	-\$45
Texas	\$1,066	\$1,099	\$1,089	-\$33	-\$23
US	N/A	\$1,082	\$1,048	N/A	N/A

## Employment by Industry (1st Quarter 2016, Percent Change)

Industry	Employment	% of total	% Change	
			Quarter	Year
Natural resources and mining	11,201	4.8%	-13.8%	-37.4%
Construction	19,575	8.4%	-4.4%	-5.9%
Manufacturing	13,556	5.8%	-3.6%	-8.4%
Trade, transportation and utilities	44,132	18.9%	-5.1%	-5.5%
Information	2,186	0.9%	-10.8%	-4.2%
Financial activities	9,577	4.1%	-8.2%	-9.2%
Professional and business services	18,828	8.1%	-1.1%	-1.0%
Education and health services	65,223	27.9%	-0.8%	2.2%
Leisure and hospitality	30,696	13.2%	-1.9%	0.0%
Other services	6,437	2.8%	-5.7%	-10.5%
Public administration	11,962	5.1%	0.2%	3.1%
<b>Total</b>	<b>233,373</b>	<b>100.0%</b>	<b>-3.5%</b>	<b>-4.9%</b>

## Employment by Industry (1st Quarter 2016)

